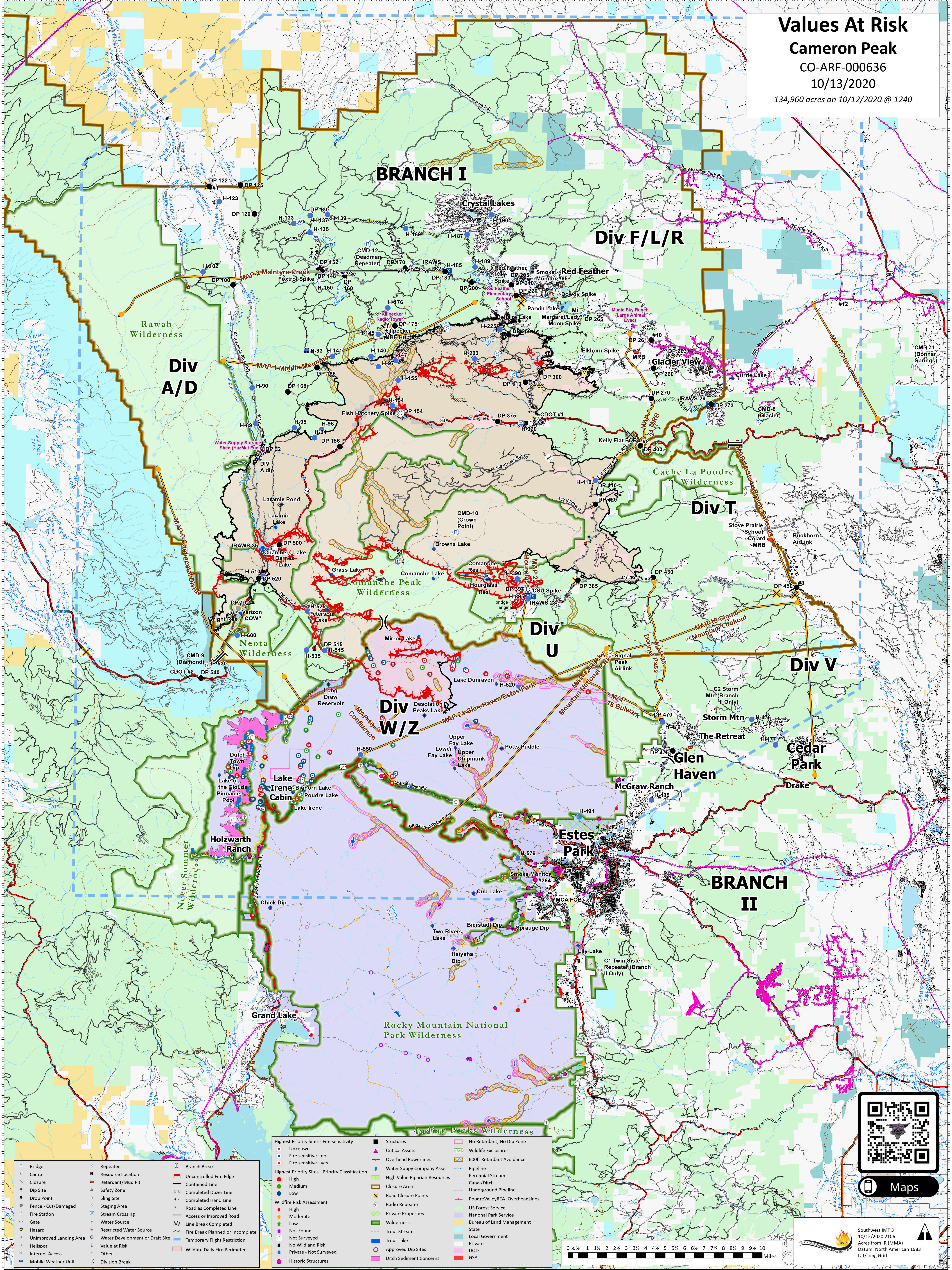
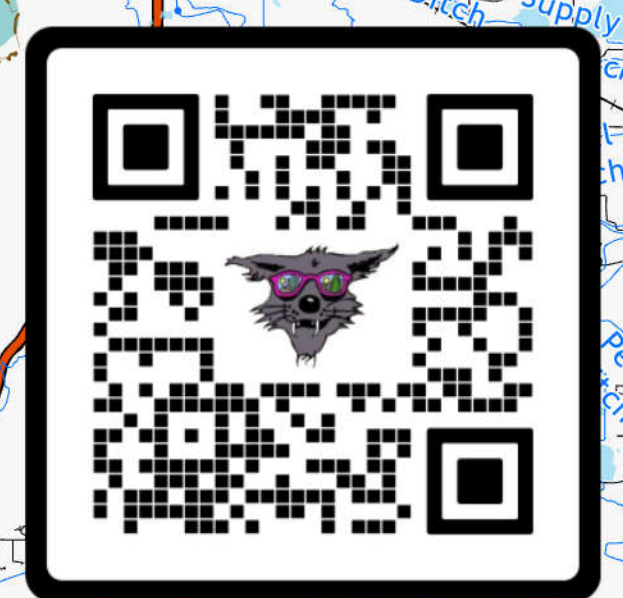
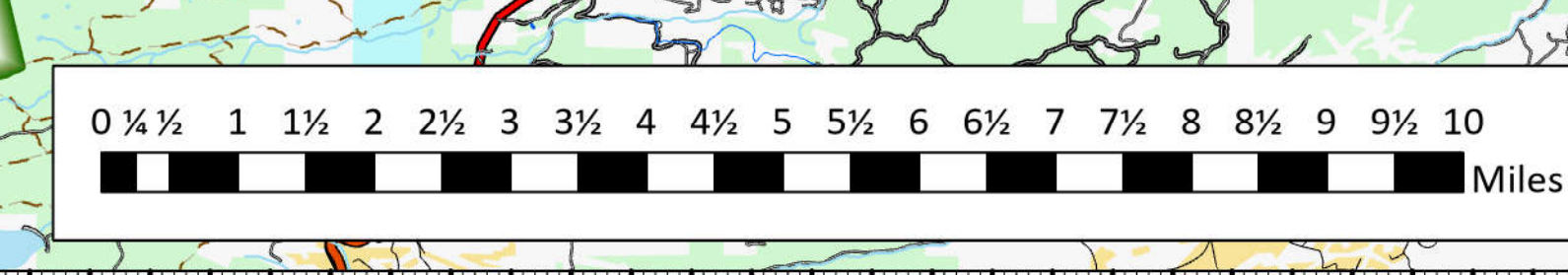


Values At Risk
Cameron Peak
 CO-ARF-000636
 10/13/2020
 134,960 acres on 10/12/2020 @ 1240



- Bridge
- Camp
- Closure
- Dip Site
- Drop Point
- Fence - Cut/Damaged
- Gate
- Hazard
- Unimproved Landing Area
- Heliport
- Internet Access
- Mobile Weather Unit
- Repeater
- Resource Location
- Retardant/Mud Pit
- Safety Zone
- Sling Site
- Staging Area
- Stream Crossing
- Water Source
- Restricted Water Source
- Water Development or Draft Site
- Value at Risk
- Other
- Division Break
- Branch Break
- Uncontrolled Fire Edge
- Contained Line
- Completed Dozer Line
- Completed Hand Line
- Road as Completed Line
- Access or Improved Road
- Line Break Completed
- Fire Break Planned or Incomplete
- Temporary Flight Restriction
- Wildfire Daily Fire Perimeter

- Highest Priority Sites - Fire sensitivity
- Unknown
- Fire sensitive - no
- Fire sensitive - yes
- Highest Priority Sites - Priority Classification
- High
- Medium
- Low
- Wildfire Risk Assessment
- High
- Moderate
- Low
- Not Found
- Not Surveyed
- No Wildland Risk
- Private - Not Surveyed
- Historic Structures
- Structures
- Critical Assets
- Overhead Powerlines
- Water Supply Company Asset
- High Value Riparian Resources
- Closure Area
- Road Closure Points
- Radio Repeater
- Private Properties
- Wilderness
- Trout Stream
- Approved Dip Sites
- Ditch Sediment Concerns
- No Retardant, No Dip Zone
- Wildlife Enclosures
- 600ft Retardant Avoidance
- Pipeline
- Perennial Stream
- Canal/Ditch
- Underground Pipeline
- PoudreValleyREA_OverheadLines
- US Forest Service
- National Park Service
- Bureau of Land Management
- State
- Local Government
- Private
- DOD
- GSA



Maps

Southwest IMT 3
 10/12/2020 2106
 Acres from IR (MMA)
 Datum: North American 1983
 Lat/Long Grid