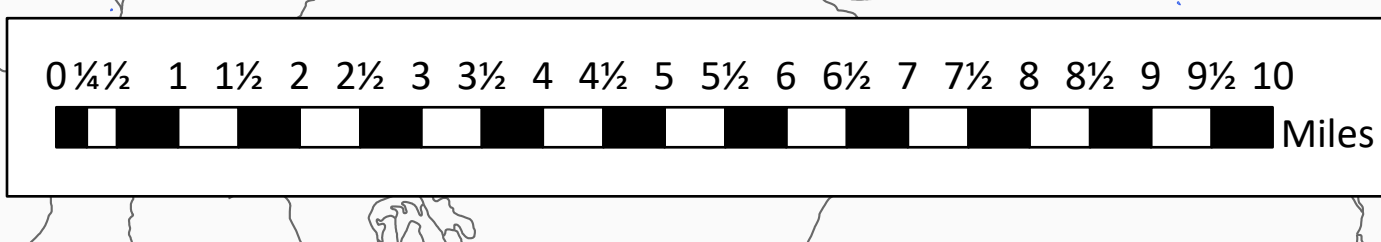
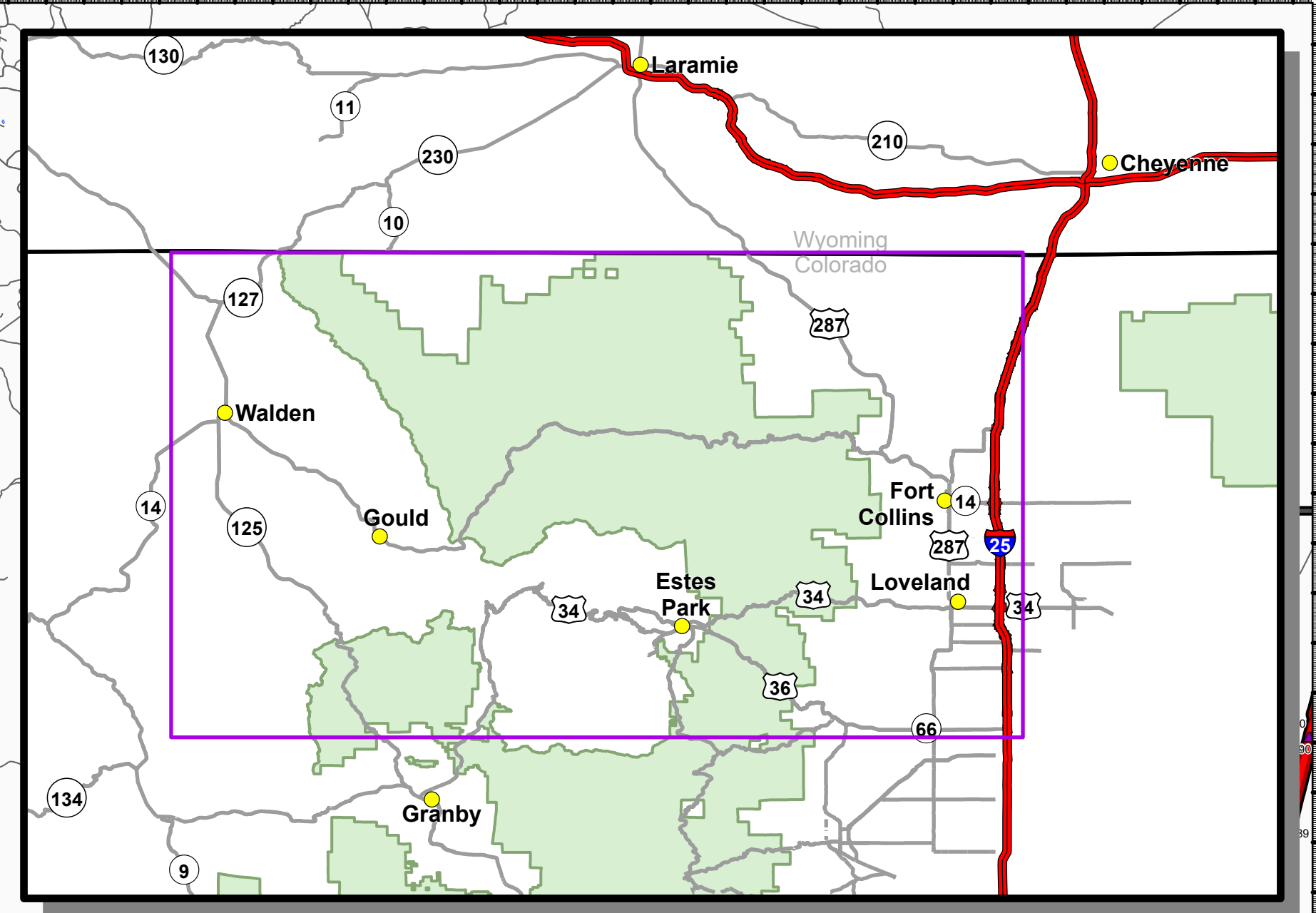
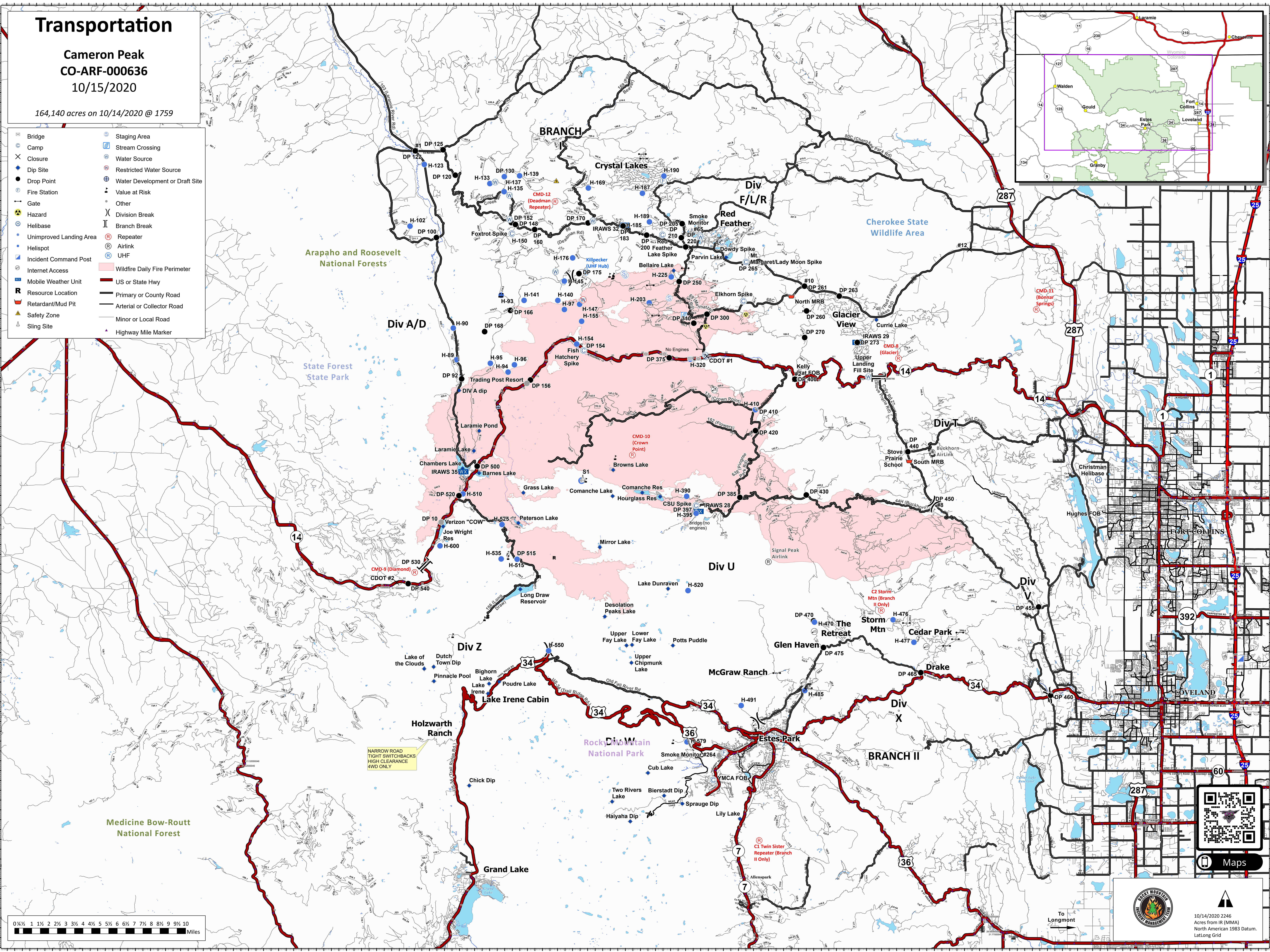


Transportation

Cameron Peak
CO-ARF-000636
10/15/2020

164,140 acres on 10/14/2020 @ 1759

- | | |
|-------------------------|---------------------------------|
| Bridge | Staging Area |
| Camp | Stream Crossing |
| Closure | Water Source |
| Dip Site | Restricted Water Source |
| Drop Point | Water Development or Draft Site |
| Fire Station | Value at Risk |
| Gate | Other |
| Hazard | Division Break |
| Helibase | Branch Break |
| Unimproved Landing Area | Repeater |
| Helispot | Airlink |
| Incident Command Post | UHF |
| Internet Access | Wildfire Daily Fire Perimeter |
| Mobile Weather Unit | US or State Hwy |
| Resource Location | Primary or County Road |
| Retardant/Mud Pit | Arterial or Collector Road |
| Safety Zone | Minor or Local Road |
| Sling Site | Highway Mile Marker |



Logos for Westwood Fire Management and a north arrow pointing upwards.

10/14/2020 2246
Acres from IR (MMA)
North American 1983 Datum.
LatLong Grid



Maps