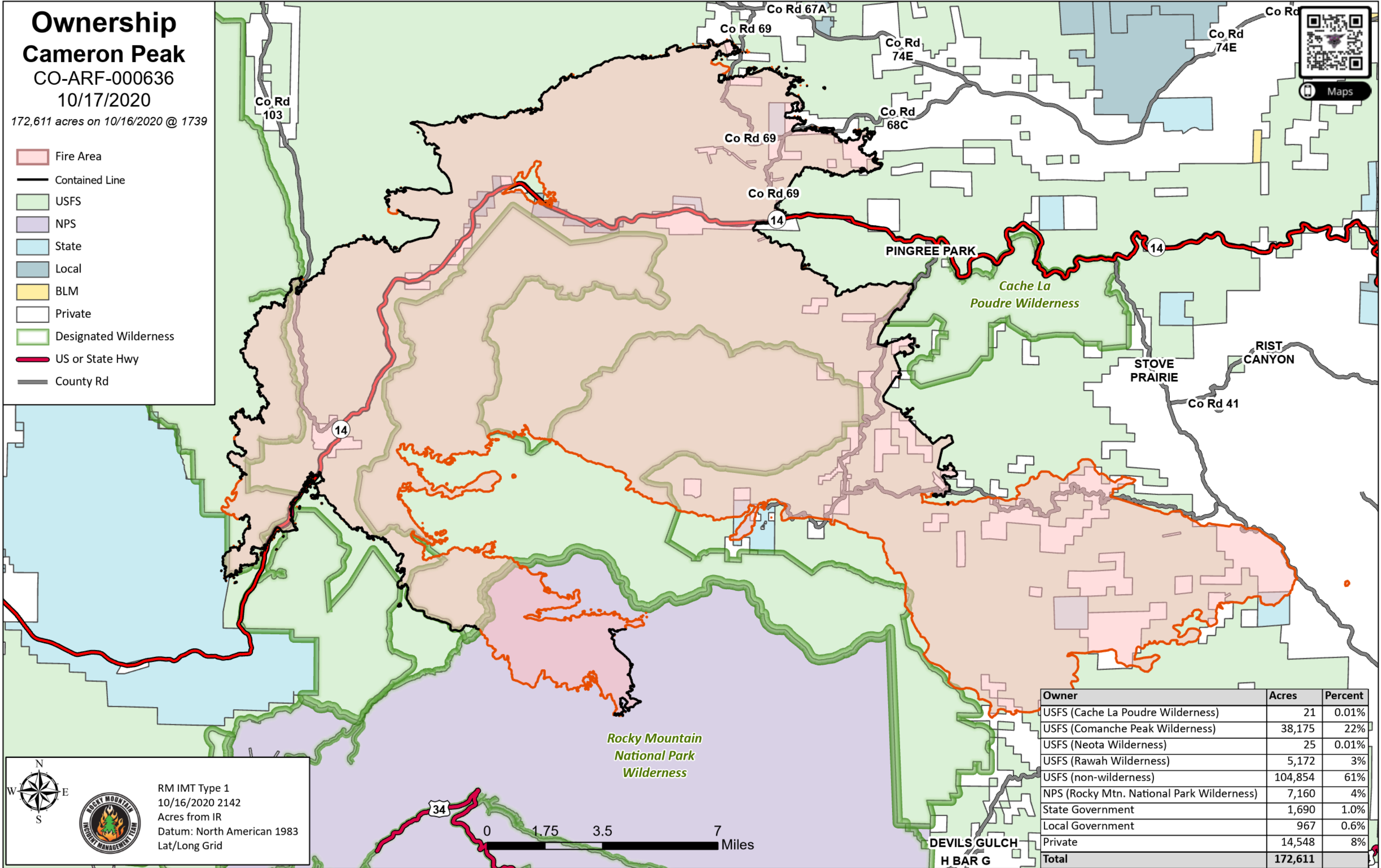


Ownership Cameron Peak

CO-ARF-000636
10/17/2020

172,611 acres on 10/16/2020 @ 1739

- Fire Area
- Contained Line
- USFS
- NPS
- State
- Local
- BLM
- Private
- Designated Wilderness
- US or State Hwy
- County Rd



Owner	Acres	Percent
USFS (Cache La Poudre Wilderness)	21	0.01%
USFS (Comanche Peak Wilderness)	38,175	22%
USFS (Neota Wilderness)	25	0.01%
USFS (Rawah Wilderness)	5,172	3%
USFS (non-wilderness)	104,854	61%
NPS (Rocky Mtn. National Park Wilderness)	7,160	4%
State Government	1,690	1.0%
Local Government	967	0.6%
Private	14,548	8%
Total	172,611	

RM IMT Type 1
10/16/2020 2142
Acres from IR
Datum: North American 1983
Lat/Long Grid

