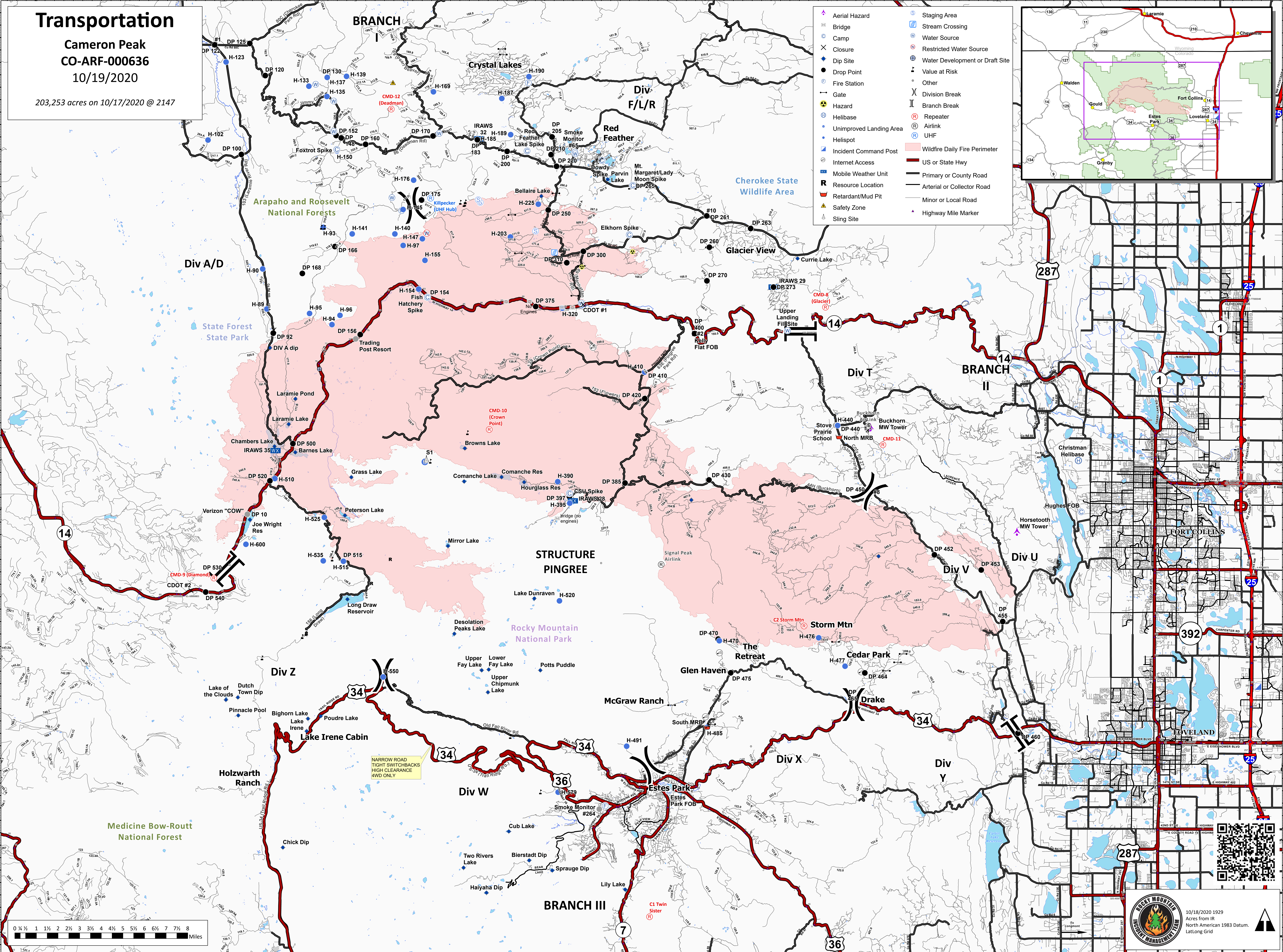
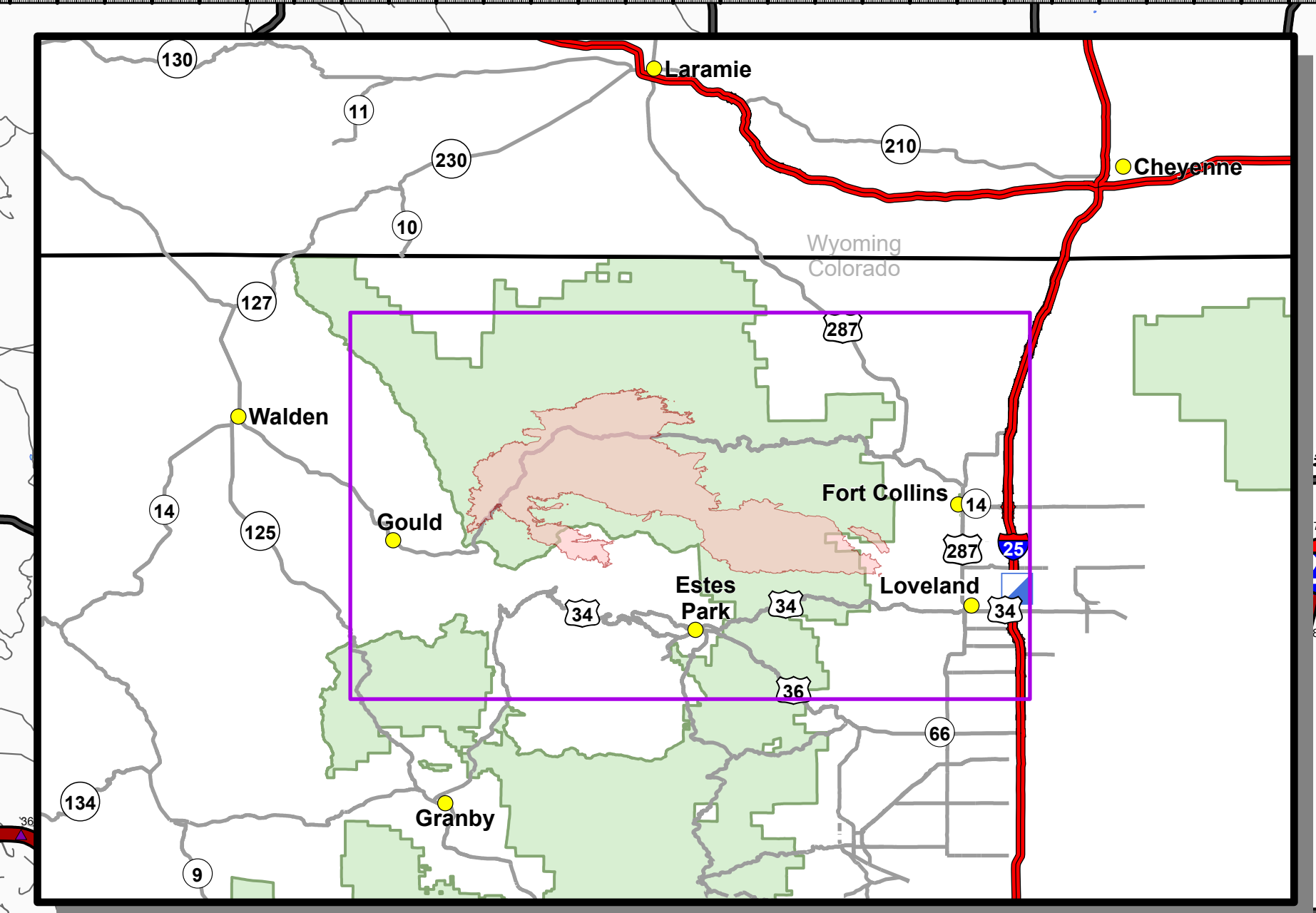


# Transportation

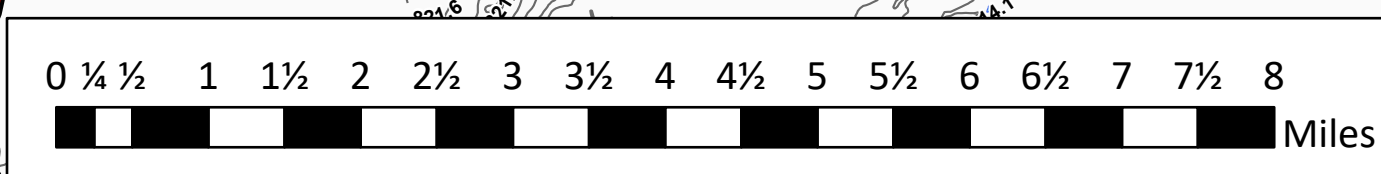
Cameron Peak  
CO-ARF-000636  
10/19/2020

203,253 acres on 10/17/2020 @ 2147

- Aerial Hazard
- Bridge
- Camp
- Closure
- Dip Site
- Drop Point
- Fire Station
- Hazard
- Helibase
- Unimproved Landing Area
- Helispot
- Incident Command Post
- Internet Access
- Mobile Weather Unit
- Resource Location
- Retardant/Mud Pit
- Safety Zone
- Sling Site
- Staging Area
- Stream Crossing
- Water Source
- Restricted Water Source
- Water Development or Draft Site
- Value at Risk
- Other
- Division Break
- Branch Break
- Repeater
- Airlink
- UHF
- Wildfire Daily Fire Perimeter
- US or State Hwy
- Primary or County Road
- Arterial or Collector Road
- Minor or Local Road
- Highway Mile Marker



NARROW ROAD  
TIGHT SWITCHBACKS  
HIGH CLEARANCE  
4WD ONLY



10/18/2020 1929  
Acres from IR  
North American 1983 Datum.  
LatLong Grid

