

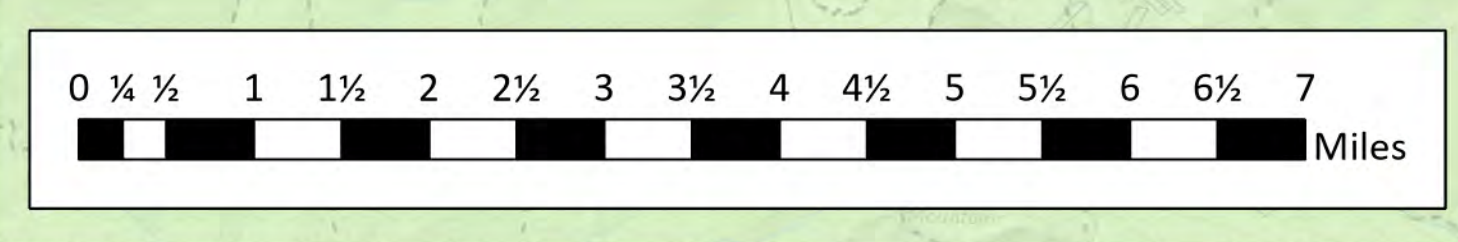
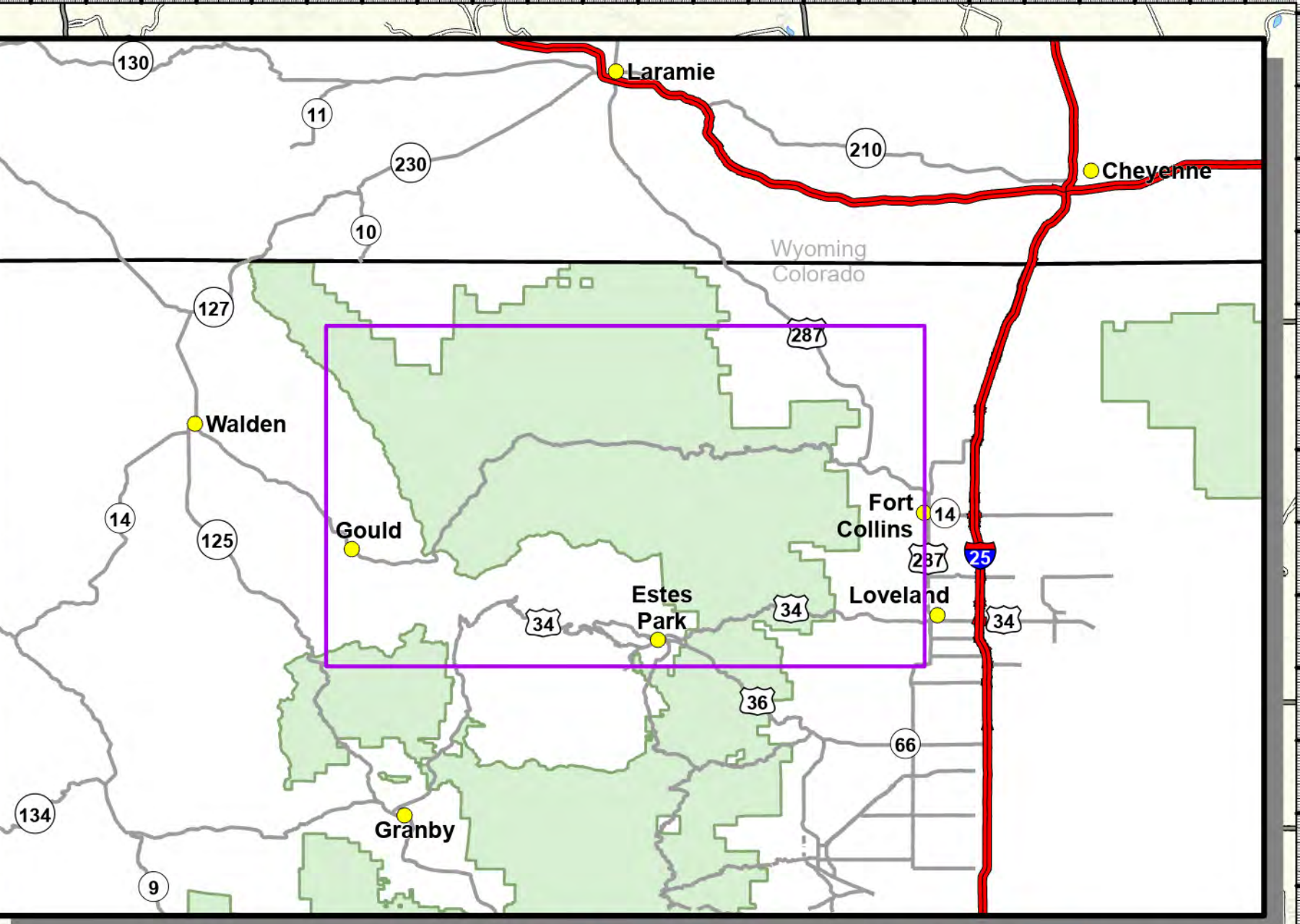
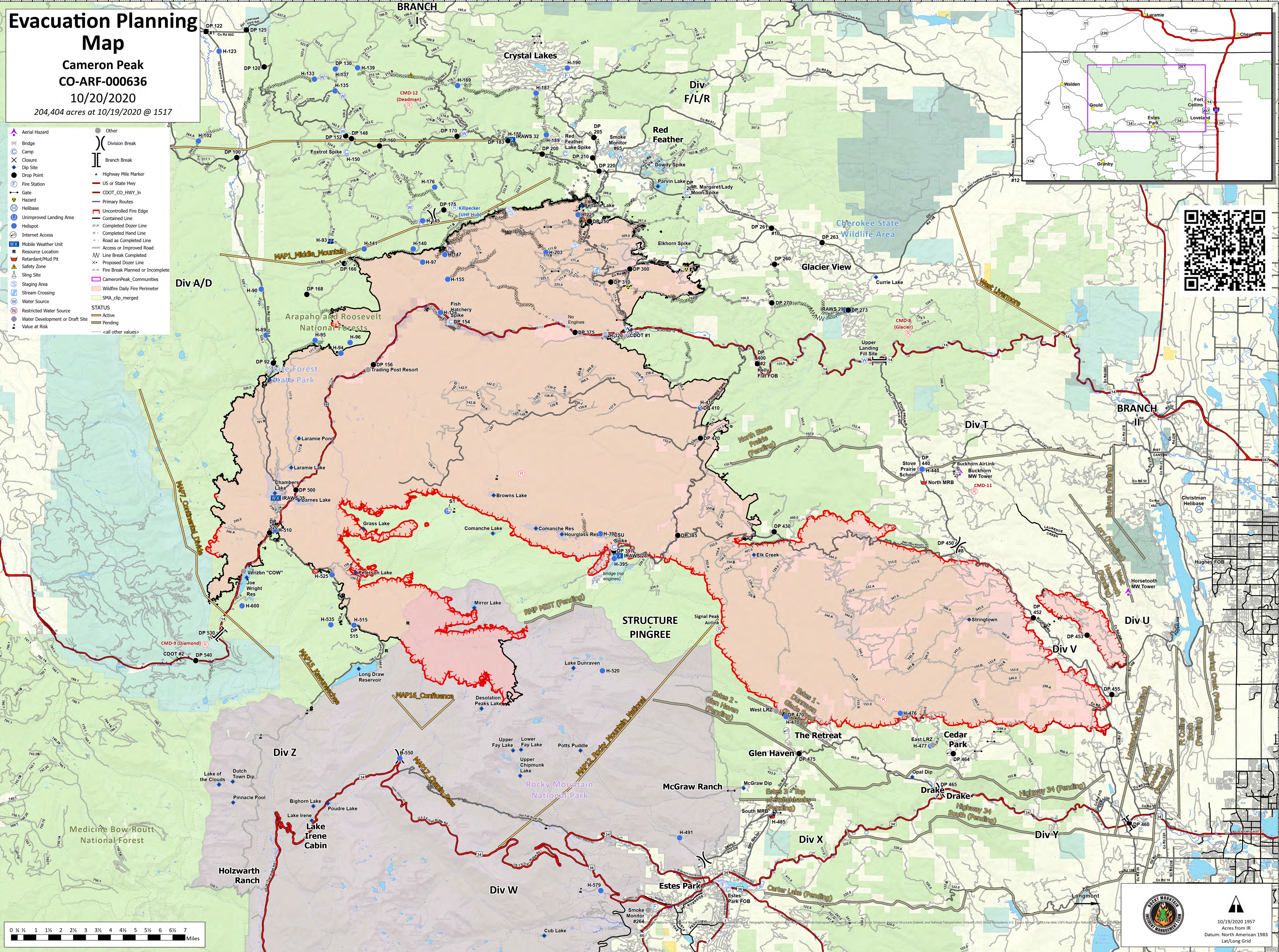
Evacuation Planning Map

Cameron Peak
CO-ARF-000636

10/20/2020

204,404 acres at 10/19/2020 @ 1517

- Aerial Hazard
- Bridge
- Camp
- Closure Location
- Dip Site
- Drop Point
- Fire Station
- Gate
- Hazard
- Helibase
- Unimproved Landing Area
- Helispot
- Internet Access
- Mobile Weather Unit
- Resource Location
- Retardant/Mud Pit
- Safety Zone
- Sling Site
- Staging Area
- Stream Crossing
- Water Source
- Restricted Water Source
- Water Development or Draft Site
- Value at Risk
- Other
- Division Break
- Branch Break
- Highway Mile Marker
- US or State Hwy
- CDOT_CO_HWY_In
- Primary Routes
- Uncontrolled Fire Edge
- Contained Line
- Completed Dozer Line
- Completed Hand Line
- Road as Improved Road
- Line Break Completed
- Proposed Dozer Line
- Fire Break Planned or Incomplete
- CameronPeak_Communities
- Wildfire Daily Fire Perimeter
- SMA_clip_merged
- STATUS
- Active
- Pending
- <all other values>



The bottom right corner features the logo for Rocky Mountain Fire Management, a north arrow, and the date 10/19/2020 1957. Below the logo, it states 'Acres from IR' and 'Datum: North American 1983 Lat/Long Grid'.