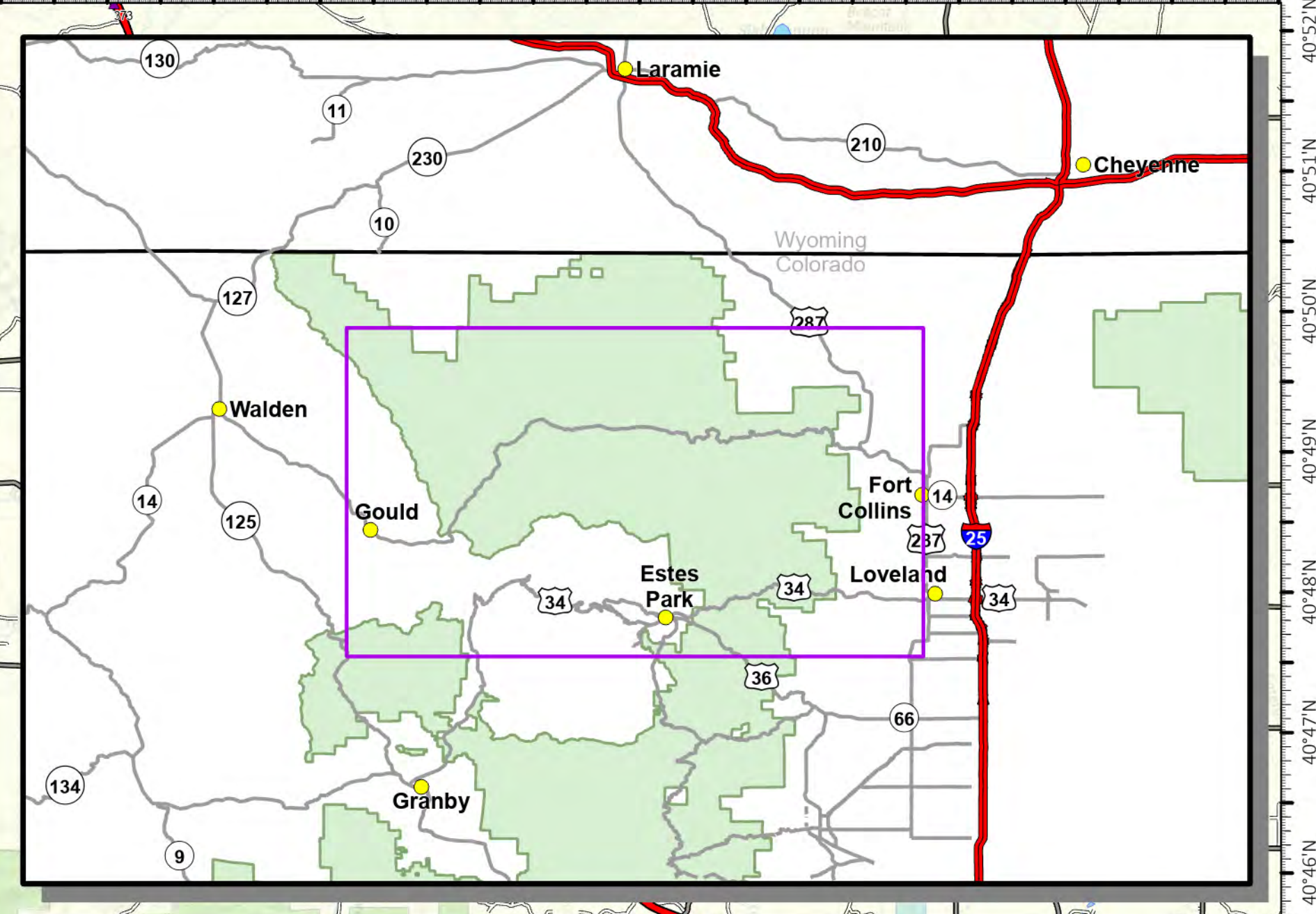
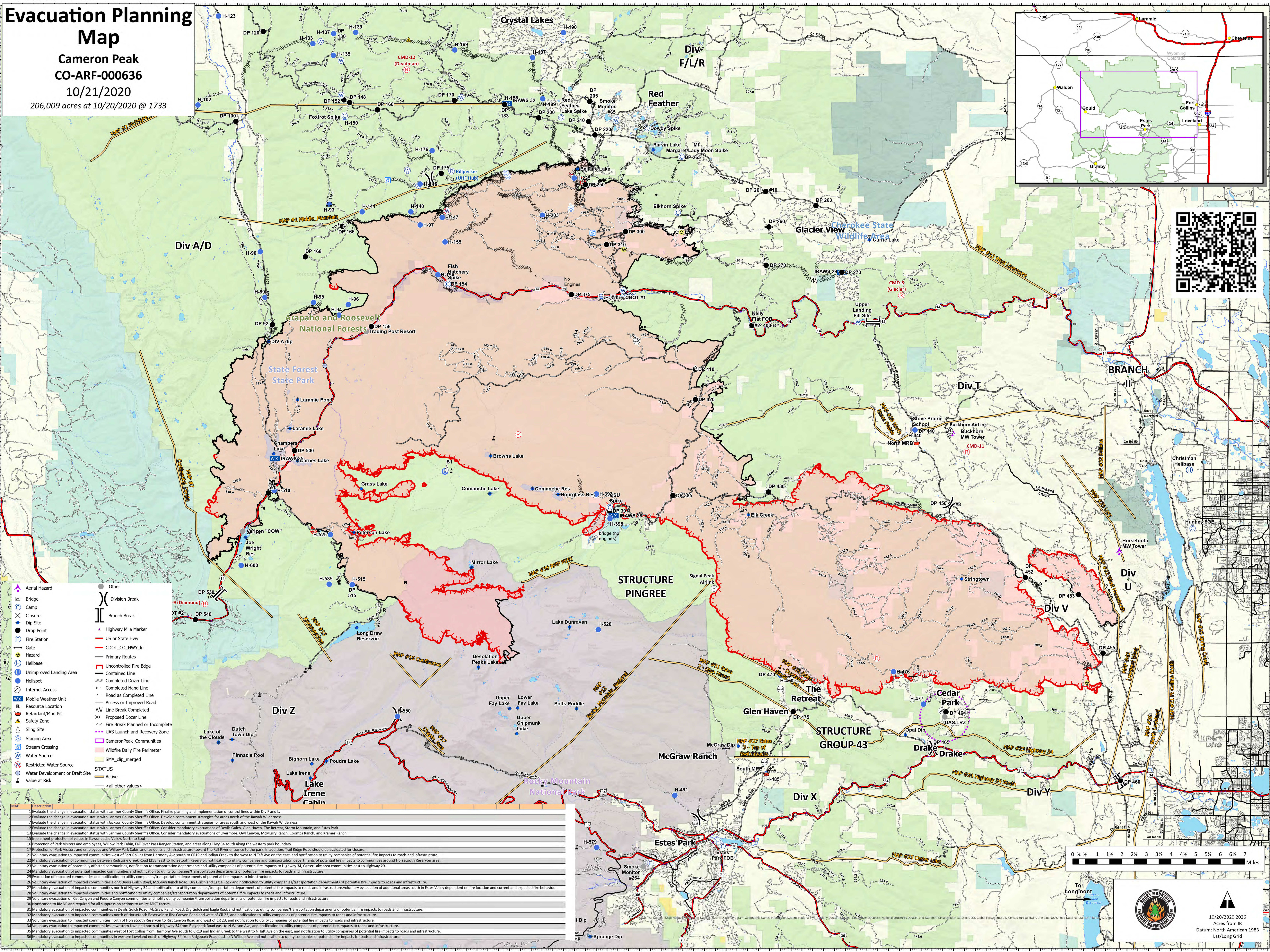


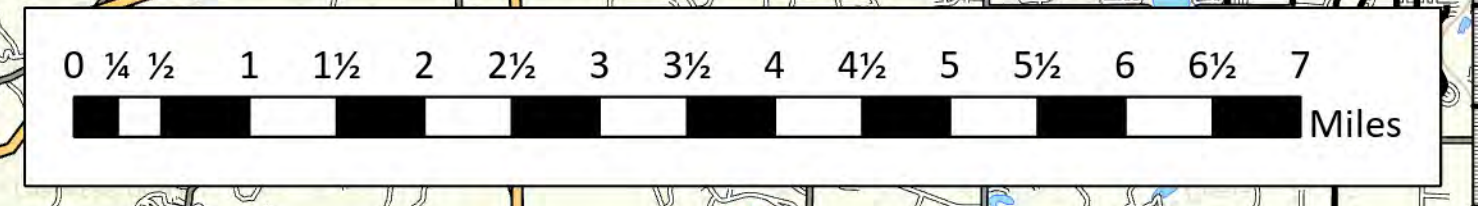
Evacuation Planning Map

**Cameron Peak
CO-ARF-000636**
10/21/2020
206,009 acres at 10/20/2020 @ 1733



- Aerial Hazard
- Bridge
- Camp
- Closure
- Dip Site
- Drop Point
- Fire Station
- Gate
- Hazard
- Helibase
- Unimproved Landing Area
- Helispot
- Internet Access
- Mobile Weather Unit
- Resource Location
- Retardant/Mud Pit
- Safety Zone
- Sling Site
- Staging Area
- Stream Crossing
- Water Source
- Restricted Water Source
- Water Development or Draft Site
- Value at Risk
- Other
- Division Break
- Branch Break
- Highway Mile Marker
- US or State Hwy
- CDOT_CO_HWY_In
- Primary Routes
- Uncontrolled Fire Edge
- Contained Line
- Completed Dozer Line
- Completed Hand Line
- Road as Completed Line
- Access or Improved Road
- Line Break Completed
- Proposed Dozer Line
- Fire Break Planned or Incomplete
- UAS Launch and Recovery Zone
- Wildfire Daily Fire Perimeter
- SMA_clip_merged
- STATUS
- Active
- Value at Risk
- <all other values>

MAP	Description
1	Evaluate the change in evacuation status with Larimer County Sheriff's Office. Finalize planning and implementation of control lines within Div F and L.
2	Evaluate the change in evacuation status with Larimer County Sheriff's Office. Develop containment strategies for areas north of the Rawah Wilderness.
7	Evaluate the change in evacuation status with Jackson County Sheriff's Office. Develop containment strategies for areas south and west of the Rawah Wilderness.
12	Evaluate the change in evacuation status with Larimer County Sheriff's Office. Consider mandatory evacuations of Devils Gulch, Glen Haven, The Retreat, Storm Mountain, and Estes Park.
13	Evaluate the change in evacuation status with Larimer County Sheriff's Office. Consider mandatory evacuations of Livermore, Owl Canyon, McMurry Ranch, Coombs Ranch, and Kramer Ranch.
15	Implement protection of values in Kawuneeche Valley, North to South.
16	Protection of Park Visitors and employees, Willow Park Cabin, Fall River Pass Ranger Station, and areas along Hwy 34 south along the western park boundary.
17	Protection of Park Visitors and employees and Willow Park Cabin and residents and infrastructure toward the Fall River entrance to the park. In addition, Trail Ridge Road should be evaluated for closure.
21	Voluntary evacuation to impacted communities west of Fort Collins from Harmony Ave south to CR19 and Indian Creek to the west to N Talt Ave on the east, and notification to utility companies of potential fire impacts to roads and infrastructure.
22	Mandatory evacuation of impacted communities between Creek Road (284) east to Horseshoe Reservoir, transportation departments of potential fire impacts to communities around Horseshoe Reservoir area.
23	Voluntary evacuation of potentially affected communities, notification to transportation departments and utility companies of potential fire impacts to Highway 34, Carter Lake area communities east to Highway 29.
24	Mandatory evacuation of impacted communities and notification to utility companies/transportation departments of potential fire impacts to roads and infrastructure.
25	Evacuation of impacted communities and notification to utility companies/transportation departments of potential fire impacts to infrastructure.
26	Voluntary evacuation of impacted communities between Highway 34 and Ridgepark Road east to N Wilson Ave, and notification to utility companies of potential fire impacts to roads and infrastructure.
27	Mandatory evacuation of impacted communities north of Highway 34 and notification to utility companies/transportation departments of potential fire impacts to roads and infrastructure.
28	Voluntary evacuation to impacted communities and notification to utility companies/transportation departments of potential fire impacts to roads and infrastructure.
29	Voluntary evacuation of Rist Canyon and Poudre Canyon communities and notify utility companies/transportation departments of potential fire impacts to roads and infrastructure.
30	Notification to RANP and required for all suppression activities for MIST tactics.
31	Mandatory evacuation of impacted communities in Devils Gulch Road, McGraw Ranch Road, Dry Gulch and Eagle Rock and notification to utility companies/transportation departments of potential fire impacts to roads and infrastructure.
32	Mandatory evacuation of impacted communities north of Horseshoe Reservoir to Rist Canyon Road and west of CR 23, and notification to utility companies of potential fire impacts to roads and infrastructure.
33	Voluntary evacuation to impacted communities north of Horseshoe Reservoir to Rist Canyon Road and west of CR 23, and notification to utility companies of potential fire impacts to roads and infrastructure.
34	Voluntary evacuation to impacted communities in western Loveland north of Highway 34 from Ridgepark Road east to N Wilson Ave, and notification to utility companies of potential fire impacts to roads and infrastructure.
35	Mandatory evacuation to impacted communities west of Fort Collins from Harmony Ave south to CR19 and Indian Creek to the west to N Talt Ave on the east, and notification to utility companies of potential fire impacts to roads and infrastructure.
36	Mandatory evacuation to impacted communities in western Loveland north of Highway 34 from Ridgepark Road east to N Wilson Ave and notification to utility companies of potential fire impacts to roads and infrastructure.



10/20/2020 2026
Acres from IR
Datum: North American 1983
Lat/Long Grid