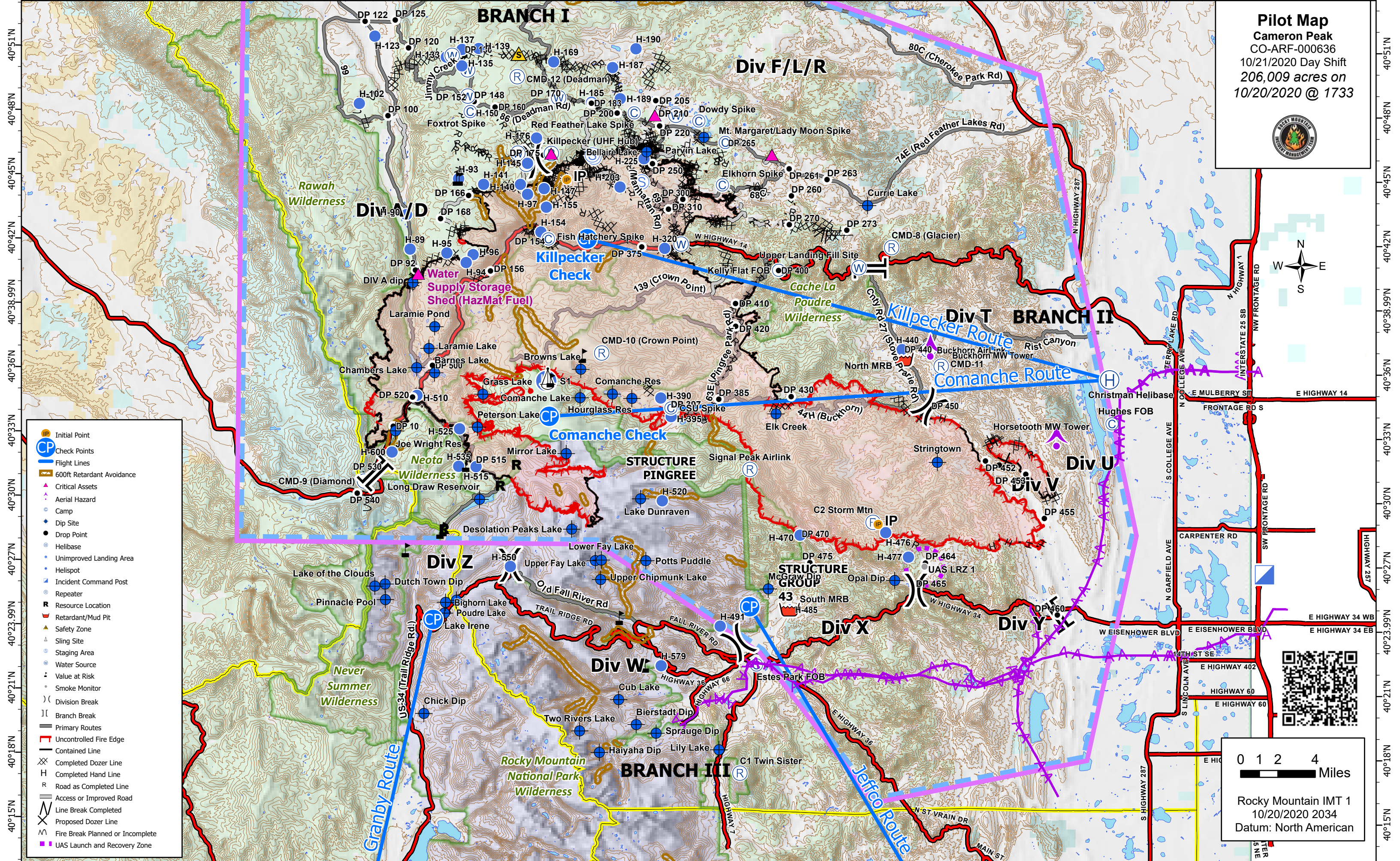



106°15'W 106°12'W 106°9'W 106°6.01'W 106°3'W 106°W 105°57'W 105°54'W 105°51.01'W 105°48'W 105°45'W 105°42'W 105°39'W 105°36.01'W 105°33'W 105°30'W 105°27'W 105°24'W 105°21.01'W 105°18'W 105°15'W 105°12'W 105°9'W 105°6.01'W 105°3'W 105°W 104°57'W 104°54'W



**Pilot Map**  
**Cameron Peak**  
 CO-ARF-000636  
 10/21/2020 Day Shift  
 206,009 acres on  
 10/20/2020 @ 1733




- Initial Point
- Check Points
- Flight Lines
- 600ft Retardant Avoidance
- Critical Assets
- Aerial Hazard
- Camp
- Dip Site
- Drop Point
- Helibase
- Unimproved Landing Area
- Helispot
- Incident Command Post
- Repeater
- Resource Location
- Retardant/Mud Pit
- Safety Zone
- Sling Site
- Staging Area
- Water Source
- Value at Risk
- Smoke Monitor
- Division Break
- Branch Break
- Primary Routes
- Uncontrolled Fire Edge
- Contained Line
- Completed Dozer Line
- Completed Hand Line
- Road as Completed Line
- Access or Improved Road
- Line Break Completed
- Proposed Dozer Line
- Fire Break Planned or Incomplete
- UAS Launch and Recovery Zone



0 1 2 4 Miles

Rocky Mountain IMT 1  
 10/20/2020 2034  
 Datum: North American

106°12'W 106°9'W 106°6.01'W 106°3'W 106°W 105°57'W 105°54'W 105°51.01'W 105°48'W 105°45'W 105°42'W 105°39'W 105°36.01'W 105°33'W 105°30'W 105°27'W 105°24'W 105°21.01'W 105°18'W 105°15'W 105°12'W 105°9'W 105°6.01'W 105°3'W 105°W 104°57'W 104°54'W

Feature	Label	Comments	LatWGS84_DDM	LongWGS84_DDM	Elevation
Aerial Hazard	<b>Buckhorn MW Tower</b>		40° 37.022' N	105° 19.643' W	
Aerial Hazard	<b>Horsetooth MW Tower</b>		40° 32.839' N	105° 11.897' W	
Camp	<b>CSU Spike</b>		40° 34.380' N	105° 35.510' W	
Camp	<b>Dowdy Spike</b>	formerly Romeo Spike	40° 47.781' N	105° 33.916' W	
Camp	<b>Elkhorn Spike</b>	9/30/20 FOBSt Perkins - CLOSED, no fire camp supplies left	40° 44.802' N	105° 32.444' W	
Camp	<b>Estes Park FOB</b>		40° 22.423' N	105° 30.186' W	
Camp	<b>Fish Hatchery Spike</b>		40° 42.229' N	105° 43.094' W	
Camp	<b>Foxtrot Spike</b>	9/29/20 - FOBSt Perkins - ice trailer, DrillComm, generator, dumpster, 9 porta potties, 3 handwash, 1 pickup load of misc camp supplies remain for backhaul	40° 48.144' N	105° 47.958' W	
Camp	<b>Hughes FOB</b>		40° 33.720' N	105° 8.507' W	
Camp	<b>Kelly Flat FOB</b>	FOB replacing Fish FOB	40° 40.837' N	105° 28.961' W	7,326
Camp	<b>Mt. Margaret/Lady Moon Spike</b>	Mount Margaret / Lady Moon Spike	40° 46.789' N	105° 32.280' W	
Camp	<b>Red Feather Lake Spike</b>	Update: 10 outhouses, 4 hand washing stations left. Original: less than 10 tents left set up. most crews appear to have moved to DP200. 10 outhouses, 4 handwashing stations, 1 dumpster left	40° 48.145' N	105° 37.883' W	
Dip Site	<b>Barnes Lake</b>		40° 35.940' N	105° 49.999' W	9,100
Dip Site	<b>Bellaire Lake</b>		40° 46.330' N	105° 37.110' W	
Dip Site	<b>Bierstadt Dip</b>		40° 19.599' N	105° 37.500' W	
Dip Site	<b>Bighorn Lake</b>		40° 25.226' N	105° 49.200' W	
Dip Site	<b>Browns Lake</b>		40° 36.160' N	105° 41.049' W	10,500
Dip Site	<b>Chambers Lake</b>		40° 36.170' N	105° 51.099' W	9,150
Dip Site	<b>Chick Dip</b>		40° 20.034' N	105° 50.457' W	
Dip Site	<b>Comanche Lake</b>	Wilderness - Verbal use approval, awaiting documentation	40° 34.830' N	105° 41.078' W	
Dip Site	<b>Comanche Res</b>	LUA in process	40° 35.014' N	105° 39.101' W	9,400
Dip Site	<b>Cub Lake</b>		40° 20.756' N	105° 38.583' W	
Dip Site	<b>Currie Lake</b>	LUA 1282AT20K5113	40° 43.880' N	105° 23.530' W	
Dip Site	<b>Desolation Peaks Lake</b>		40° 28.694' N	105° 41.530' W	
Dip Site	<b>DIV A dip</b>		40° 40.137' N	105° 51.386' W	8,600
Dip Site	<b>Dutch Town Dip</b>		40° 26.057' N	105° 52.902' W	
Dip Site	<b>Elk Creek</b>		40° 34.140' N	105° 29.080' W	
Dip Site	<b>Grass Lake</b>	small pond	40° 34.960' N	105° 47.029' W	9,900
Dip Site	<b>Haiyaha Dip</b>		40° 18.282' N	105° 39.734' W	
Dip Site	<b>Hourglass Res</b>	LUA in process	40° 34.816' N	105° 37.907' W	9,400
Dip Site	<b>Joe Wright Res</b>		40° 33.210' N	105° 52.359' W	9,920
Dip Site	<b>Lake Dunraven</b>		40° 30.135' N	105° 37.330' W	
Dip Site	<b>Lake Irene</b>		40° 24.724' N	105° 49.264' W	
Dip Site	<b>Lake of the Clouds</b>		40° 25.953' N	105° 53.529' W	
Dip Site	<b>Laramie Lake</b>		40° 37.070' N	105° 50.359' W	9,400
Dip Site	<b>Laramie Pond</b>	small pond	40° 38.090' N	105° 50.019' W	9,500
Dip Site	<b>Lily Lake</b>		40° 18.447' N	105° 32.443' W	
Dip Site	<b>Long Draw Reservoir</b>	Water may be used in RMNP	40° 30.048' N	105° 47.178' W	
Dip Site	<b>Lower Fay Lake</b>		40° 27.263' N	105° 39.706' W	
Dip Site	<b>McGraw Dip</b>		40° 25.967' N	105° 29.490' W	
Dip Site	<b>Mirror Lake</b>		40° 32.220' N	105° 41.900' W	
Dip Site	<b>Opal Dip</b>		40° 26.390' N	105° 21.770' W	
Dip Site	<b>Parvin Lake</b>	Approved 9/18 George Schitzler, Wildlife Manager (970) 420-1466	40° 47.020' N	105° 33.600' W	
Dip Site	<b>Peterson Lake</b>		40° 33.420' N	105° 47.349' W	9,500
Dip Site	<b>Pinnacle Pool</b>		40° 25.330' N	105° 52.872' W	
Dip Site	<b>Potts Puddle</b>		40° 27.249' N	105° 36.984' W	
Dip Site	<b>Poudre Lake</b>		40° 25.332' N	105° 48.534' W	
Dip Site	<b>Sprague Dip</b>		40° 19.199' N	105° 36.284' W	
Dip Site	<b>Stringtown</b>		40° 31.910' N	105° 19.190' W	
Dip Site	<b>Two Rivers Lake</b>		40° 19.281' N	105° 40.949' W	
Dip Site	<b>Upper Chipmunk Lake</b>		40° 26.353' N	105° 39.736' W	
Dip Site	<b>Upper Fay Lake</b>		40° 27.235' N	105° 40.073' W	
Helibase	<b>Christman Helibase</b>	LUA1282X920K5017	40° 35.780' N	105° 08.659' W	5,150
Helispot	<b>H-102</b>	Type 2	40° 48.470' N	105° 54.780' W	8,400
Helispot	<b>H-123</b>	Type 3. Private. No LUA. Minimize use. Verbal authorization from Scott Butcher, Diamond Trail Ranch (970) 491-9659	40° 51.619' N	105° 53.867' W	8,350
Helispot	<b>H-133</b>	Type 2 and Type 3	40° 50.677' N	105° 49.465' W	10,100
Helispot	<b>H-135</b>	Type 2	40° 50.271' N	105° 48.506' W	10,070
Helispot	<b>H-137</b>	Approved for Type 2 and Type 3	40° 51.038' N	105° 48.500' W	10,076
Helispot	<b>H-139</b>	Approved for Type 2 or Type 3	40° 51.088' N	105° 47.476' W	10,250
Helispot	<b>H-140</b>	10,200' Approved 9/14 Type 2/3	40° 44.763' N	105° 44.843' W	
Helispot	<b>H-141</b>	9,950' Approved 9/14 Type 2/3	40° 44.750' N	105° 47.100' W	
Helispot	<b>H-145</b>	10,400' Approved 9/14 Type 2/3	40° 45.750' N	105° 44.420' W	
Helispot	<b>H-147</b>	10,000' Type 2/3 requires dust abatement prior to use	40° 44.577' N	105° 43.385' W	
Helispot	<b>H-150</b>	Approved Type 2. Could fit a Type 1 or multiple aircraft for PSD ops.	40° 48.081' N	105° 47.950' W	9,900
Helispot	<b>H-154</b>	7,730' Approved Type 2/3 helicopter	40° 42.550' N	105° 43.561' W	
Helispot	<b>H-155</b>	Requires dust abatement prior to use	40° 43.710' N	105° 43.240' W	
Helispot	<b>H-169</b>	Approved for T-2 or T-3 Helicopter. Trees at NE corner	40° 50.496' N	105° 42.864' W	9,500
Helispot	<b>H-176</b>	Type I/II elev 10,900'	40° 46.933' N	105° 43.875' W	
Helispot	<b>H-185</b>		40° 48.622' N	105° 40.513' W	9,500
Helispot	<b>H-187</b>		40° 50.250' N	105° 39.239' W	8,600
Helispot	<b>H-189</b>		40° 48.796' N	105° 38.756' W	8,740
Helispot	<b>H-190</b>	8,400' Type 2/3. Private. No LUA. Minimize use. Redfeather FD Chief Hill (720) 427-3893 indicates unknown ownership and they use it all the time.	40° 51.135' N	105° 37.811' W	

Helispot	<b>H-203</b>	9,2000' Type 2/3 requires dust abatement	40° 44.678' N	105° 38.729' W	
Helispot	<b>H-225</b>	Type 3 only	40° 46.006' N	105° 37.266' W	8,700
Helispot	<b>H-320</b>	Type 2/3. Private. No LUA. Minimize use. Verbal authorization from owner Kevin and Vaundeen Bachus (970) 491-9659	40° 41.830' N	105° 35.960' W	7,225
Helispot	<b>H-390</b>	Approved for Type 3 or Type 2	40° 34.845' N	105° 36.137' W	9,100
Helispot	<b>H-395</b>	9,200' Approved 9/15 Type 2/3	40° 33.982' N	105° 35.495' W	
Helispot	<b>H-440</b>		40° 37.165' N	105° 21.379' W	
Helispot	<b>H-470</b>	7,800' Approved 9/14 Type 2/3	40° 28.482' N	105° 27.567' W	
Helispot	<b>H-476</b>	8,500' Type II/III	40° 28.620' N	105° 22.330' W	
Helispot	<b>H-477</b>	8,000 type II/III Road into spot	40° 27.480' N	105° 20.935' W	
Helispot	<b>H-485</b>	Track # days A/C land at site for LUA 1282AT20K5051	40° 24.996' N	105° 28.186' W	
Helispot	<b>H-491</b>	8,000 Approved 9/15 Type 2/3	40° 24.216' N	105° 32.415' W	
Helispot	<b>H-510</b>	Approved for Type 3 only	40° 34.877' N	105° 51.066' W	9,440
Helispot	<b>H-515</b>	Type II/III elev 10,200'	40° 31.573' N	105° 47.410' W	
Helispot	<b>H-520</b>	8,400' Approved 9/15 Type 2/3	40° 30.048' N	105° 36.004' W	
Helispot	<b>H-525</b>	Type II/III elev 9,900'	40° 33.333' N	105° 48.438' W	
Helispot	<b>H-535</b>	Type II/III elev 10,300'	40° 31.583' N	105° 48.473' W	
Helispot	<b>H-550</b>	Parking lot AVC. Requires coordination with ROMO.	40° 26.930' N	105° 45.260' W	
Helispot	<b>H-579</b>	RMNP approved site	40° 22.349' N	105° 36.004' W	
Helispot	<b>H-600</b>	Type 2 and Type 3	40° 32.220' N	105° 52.559' W	10,400
Helispot	<b>H-89</b>		40° 41.697' N	105° 51.575' W	
Helispot	<b>H-90</b>	Helispot along 103rd in Div A. Approved Type 2.	40° 43.307' N	105° 51.818' W	8,400
Helispot	<b>H-93</b>	Approved for Type 2	40° 45.003' N	105° 48.637' W	9,670
Helispot	<b>H-94</b>	10,100' Type 2/3	40° 41.093' N	105° 48.127' W	
Helispot	<b>H-95</b>	10,100' Approved 9.14 Type 2/3	40° 41.533' N	105° 49.317' W	
Helispot	<b>H-96</b>	10,000' Type 2/3	40° 41.468' N	105° 47.707' W	
Helispot	<b>H-97</b>	10,100' Type 2/3 requires dust abatement prior to use	40° 44.303' N	105° 44.400' W	
Landing or Log Deck		Log deck #120	40° 46.618' N	105° 48.274' W	
Landing or Log Deck		Log deck #121	40° 46.361' N	105° 48.188' W	
Landing or Log Deck		Log deck #122	40° 46.463' N	105° 47.700' W	
Landing or Log Deck		Log deck #123	40° 46.304' N	105° 47.523' W	
Landing or Log Deck		Log deck #124	40° 46.230' N	105° 47.408' W	
Landing or Log Deck		Log deck #125	40° 46.240' N	105° 47.260' W	
Landing or Log Deck		Log deck #126	40° 46.258' N	105° 47.089' W	
Landing or Log Deck		Log deck 127	40° 46.159' N	105° 46.980' W	
Landing or Log Deck		Log deck 128	40° 46.102' N	105° 46.973' W	
Landing or Log Deck		Deck 129	40° 46.072' N	105° 46.942' W	
Landing or Log Deck		Log deck 130	40° 46.046' N	105° 46.917' W	
Mobile Weather Unit	<b>IRAWS 28</b>	CSU Campus	40° 34.080' N	105° 35.339' W	9,020
Mobile Weather Unit	<b>IRAWS 29</b>	Moved to DP 273 on 10/1/20	40° 42.727' N	105° 24.800' W	10,250
Mobile Weather Unit	<b>IRAWS 32</b>	Deadman Road, elev 9,531'	40° 48.619' N	105° 40.423' W	8,600
Mobile Weather Unit	<b>IRAWS 35</b>	Chambers Lake	40° 36.000' N	105° 51.059' W	9,200
Other	<b>UAS LRZ 1</b>	UF107 launch and recovery zone	40° 27.031' N	105° 19.951' W	
Repeater	<b>Buckhorn AirLink</b>	Black	40° 37.149' N	105° 19.773' W	
Repeater	<b>C1 Twin Sister</b>	Red	40° 17.359' N	105° 31.160' W	
Repeater	<b>C2 Storm Mtn</b>	Red	40° 29.096' N	105° 23.109' W	
Repeater	<b>CMD-10 (Crown Point)</b>	Red	40° 36.925' N	105° 39.777' W	11,600
Repeater	<b>CMD-11</b>	Red	40° 36.397' N	105° 18.980' W	6,800
Repeater	<b>CMD-12 (Deadman)</b>	Red	40° 49.789' N	105° 45.095' W	10,700
Repeater	<b>CMD-8 (Glacier)</b>	Red	40° 41.925' N	105° 22.043' W	7,300
Repeater	<b>CMD-9 (Diamond)</b>	Red	40° 30.851' N	105° 54.231' W	11,600
Repeater	<b>Killpecker (UHF Hub)</b>	Blue	40° 46.218' N	105° 42.962' W	
Repeater	<b>Signal Peak Airlink</b>	Black	40° 31.537' N	105° 30.656' W	
Resource Location		Fish Study Project Tag Collection Equipment	40° 31.665' N	105° 44.939' W	9,600
Resource Location		Data shack (wrapped)	40° 28.649' N	105° 49.325' W	
Resource Location		Snow tell (wrapped)	40° 30.691' N	105° 45.917' W	
Restricted Water Source			40° 44.806' N	105° 43.154' W	
Retardant/ Mud Pit	<b>North MRB</b>		40° 36.706' N	105° 21.298' W	
Retardant/ Mud Pit	<b>South MRB</b>		40° 24.996' N	105° 28.186' W	
Safety Zone		Dozer pushed safety zone approx: 250' x 400'	40° 50.854' N	105° 45.014' W	
Sling Site	<b>S1</b>	sling for spike camps	40° 35.710' N	105° 43.080' W	
Staging Area		1/2 acre cleared with a dozer	40° 44.921' N	105° 37.402' W	
Staging Area		1/2 acre turn around spot	40° 46.047' N	105° 40.336' W	
Staging Area		turn around spot	40° 46.064' N	105° 40.344' W	
Staging Area			40° 46.167' N	105° 40.445' W	
Unimproved Landing Area		wide open medicvac/ helispot for Div U spike camp	40° 35.601' N	105° 43.157' W	
Value at Risk		Historic Cabins	40° 45.009' N	105° 48.553' W	9,700
Value at Risk		Historic Cabins	40° 45.007' N	105° 48.722' W	9,700
Value at Risk		Ditch Cabin	40° 27.658' N	105° 51.637' W	10,200
Value at Risk		Cabin	40° 28.654' N	105° 49.338' W	10,200
Value at Risk		Cabin #3 (3 structures wrapped, plumbed, sprinklers)	40° 28.530' N	105° 49.530' W	
Value at Risk		cabin remains	40° 35.629' N	105° 42.860' W	
Value at Risk		cabin remains	40° 36.792' N	105° 40.911' W	
Value at Risk		Willow Enclosure, metal	40° 24.574' N	105° 38.531' W	