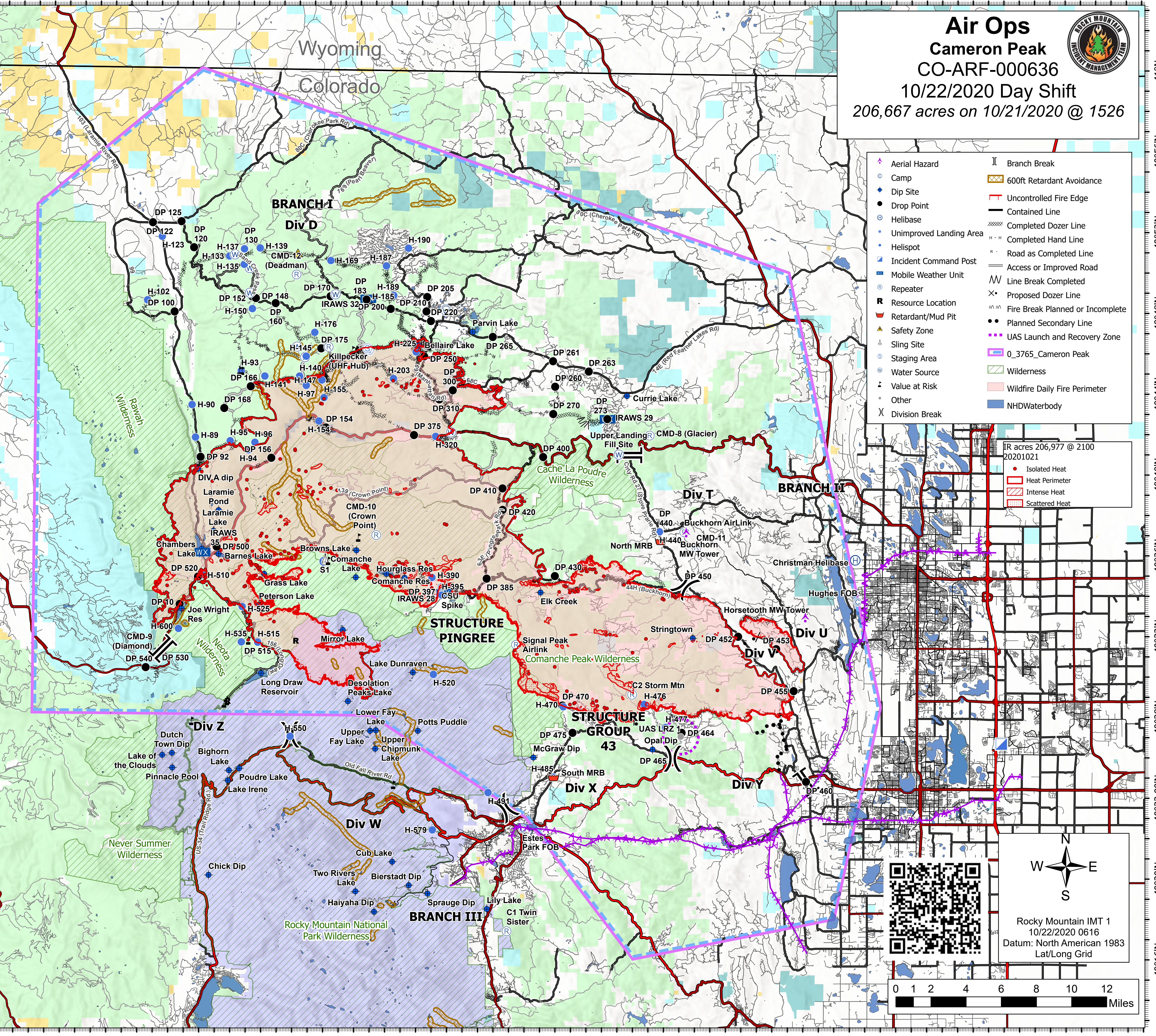


FC Point Type	Label	Latitude	Longitude
Aerial Hazard	Horsetooth MW Tower	40° 32.839' N	105° 11.897' W
Aerial Hazard	Buckhorn MW Tower	40° 37.022' N	105° 19.643' W
Camp	CSU Spike	40° 34.380' N	105° 35.510' W
Camp	Hughes FOB	40° 33.720' N	105° 8.507' W
Camp	Estes Park FOB	40° 22.423' N	105° 30.186' W
Dip Site	Joe Wright Res	40° 33.210' N	105° 52.359' W
Dip Site	Chambers Lake	40° 36.170' N	105° 51.099' W
Dip Site	Barnes Lake	40° 35.940' N	105° 49.999' W
Dip Site	Peterson Lake	40° 33.420' N	105° 47.349' W
Dip Site	Laramie Lake	40° 37.070' N	105° 50.359' W
Dip Site	Laramie Pond	40° 38.090' N	105° 50.019' W
Dip Site	Grass Lake	40° 34.960' N	105° 47.029' W
Dip Site	Browns Lake	40° 36.160' N	105° 41.049' W
Dip Site	Comanche Res	40° 35.014' N	105° 39.101' W
Dip Site	Hourglass Res	40° 34.816' N	105° 37.907' W
Dip Site	DIV A dip	40° 40.137' N	105° 51.386' W
Dip Site	Chick Dip	40° 20.034' N	105° 50.457' W
Dip Site	Dutch Town Dip	40° 26.057' N	105° 52.902' W
Dip Site	Poudre Lake	40° 25.332' N	105° 48.534' W
Dip Site	Potts Puddle	40° 27.249' N	105° 36.984' W
Dip Site	Haiyaha Dip	40° 18.282' N	105° 39.734' W
Dip Site	Bierstadt Dip	40° 19.599' N	105° 37.500' W
Dip Site	Sprague Dip	40° 19.199' N	105° 36.284' W
Dip Site	Parvin Lake	40° 47.020' N	105° 33.600' W
Dip Site	Bellaire Lake	40° 46.330' N	105° 37.110' W
Dip Site	Mirror Lake	40° 32.220' N	105° 41.900' W
Dip Site	Long Draw Reservoir	40° 30.048' N	105° 47.178' W
Dip Site	Upper Chipmunk Lake	40° 26.353' N	105° 39.736' W
Dip Site	Upper Fay Lake	40° 27.235' N	105° 40.073' W
Dip Site	Lower Fay Lake	40° 27.263' N	105° 39.706' W
Dip Site	Desolation Peaks Lake	40° 28.694' N	105° 41.530' W
Dip Site	Lake Dunraven	40° 30.135' N	105° 37.330' W
Dip Site	Cub Lake	40° 20.756' N	105° 38.583' W
Dip Site	Two Rivers Lake	40° 19.281' N	105° 40.949' W
Dip Site	Lily Lake	40° 18.447' N	105° 32.443' W
Dip Site	Lake Irene	40° 24.724' N	105° 49.264' W
Dip Site	Bighorn Lake	40° 25.226' N	105° 49.200' W
Dip Site	Lake of the Clouds	40° 25.953' N	105° 53.529' W
Dip Site	Pinnacle Pool	40° 25.330' N	105° 52.872' W
Dip Site	Currie Lake	40° 43.880' N	105° 23.530' W
Dip Site	Comanche Lake	40° 34.830' N	105° 41.078' W
Dip Site	Elk Creek	40° 34.140' N	105° 29.080' W
Dip Site	Stringtown	40° 31.910' N	105° 19.190' W
Dip Site	McGraw Dip	40° 25.967' N	105° 29.490' W
Dip Site	Opal Dip	40° 26.390' N	105° 21.770' W
Drop Point	DP 250	40° 45.774' N	105° 36.738' W
Drop Point	DP 200	40° 48.121' N	105° 38.937' W
Drop Point	DP 300	40° 44.120' N	105° 34.865' W
Drop Point	DP 375	40° 41.887' N	105° 37.364' W
Drop Point	DP 500	40° 36.290' N	105° 50.133' W
Drop Point	DP 10	40° 33.425' N	105° 52.494' W
Drop Point	DP 420	40° 38.209' N	105° 31.571' W
Drop Point	DP 520	40° 34.782' N	105° 51.327' W
Drop Point	DP 220	40° 47.536' N	105° 36.316' W
Drop Point	DP 154	40° 42.228' N	105° 43.093' W
Drop Point	DP 120	40° 51.088' N	105° 51.781' W
Drop Point	DP 100	40° 47.905' N	105° 53.007' W
Drop Point	DP 92	40° 40.726' N	105° 51.266' W
Drop Point	DP 125	40° 52.374' N	105° 52.619' W
Drop Point	DP 152	40° 48.703' N	105° 47.997' W
Drop Point	DP 160	40° 48.359' N	105° 46.434' W
Drop Point	DP 170	40° 48.719' N	105° 42.865' W
Drop Point	DP 385	40° 34.806' N	105° 32.584' W
Drop Point	DP 122	40° 52.302' N	105° 54.470' W
Drop Point	DP 310	40° 43.657' N	105° 35.739' W
Drop Point	DP 148	40° 48.608' N	105° 47.724' W
Drop Point	DP 156	40° 40.703' N	105° 46.628' W
Drop Point	DP 397	40° 34.248' N	105° 35.516' W
Drop Point	DP 130	40° 51.041' N	105° 48.497' W
Drop Point	DP 410	40° 39.275' N	105° 31.588' W
Drop Point	DP 530	40° 31.215' N	105° 53.609' W
Drop Point	DP 430	40° 34.951' N	105° 28.159' W
Drop Point	DP 540	40° 30.281' N	105° 54.654' W
Drop Point	DP 400	40° 40.837' N	105° 28.961' W
Drop Point	DP 515	40° 31.584' N	105° 47.412' W
Drop Point	DP 183	40° 48.581' N	105° 40.519' W
Drop Point	DP 270	40° 42.963' N	105° 28.321' W
Drop Point	DP 260	40° 44.317' N	105° 28.202' W
Drop Point	DP 263	40° 45.079' N	105° 26.021' W
Drop Point	DP 273	40° 42.725' N	105° 24.798' W
Drop Point	DP 175	40° 46.136' N	105° 43.445' W
Drop Point	DP 475	40° 27.193' N	105° 26.958' W
Drop Point	DP 470	40° 28.547' N	105° 27.627' W
Drop Point	DP 210	40° 48.003' N	105° 36.610' W
Drop Point	DP 265	40° 46.762' N	105° 32.281' W
Drop Point	DP 205	40° 48.716' N	105° 36.564' W
Drop Point	DP 261	40° 45.576' N	105° 28.350' W
Drop Point	DP 166	40° 44.235' N	105° 48.010' W
Drop Point	DP 168	40° 43.140' N	105° 49.717' W
Drop Point	DP 450	40° 34.538' N	105° 19.726' W

FC Point Type	Label	Latitude	Longitude
Drop Point	DP 440	40° 37.174' N	105° 21.390' W
Drop Point	DP 455	40° 29.298' N	105° 12.636' W
Drop Point	DP 465	40° 25.938' N	105° 20.471' W
Drop Point	DP 460	40° 24.803' N	105° 11.823' W
Drop Point	DP 452	40° 31.976' N	105° 16.246' W
Drop Point	DP 453	40° 31.372' N	105° 13.775' W
Drop Point	DP 464	40° 27.213' N	105° 19.894' W
Helibase	Christman Helibase	40° 35.780' N	105° 08.659' W
Helibase	H-510	40° 34.877' N	105° 51.066' W
Helispot	H-150	40° 48.081' N	105° 47.950' W
Helispot	H-225	40° 46.006' N	105° 37.266' W
Helispot	H-390	40° 34.845' N	105° 36.137' W
Helispot	H-185	40° 48.622' N	105° 40.513' W
Helispot	H-93	40° 45.003' N	105° 48.637' W
Helispot	H-169	40° 50.496' N	105° 42.864' W
Helispot	H-123	40° 51.619' N	105° 53.867' W
Helispot	H-600	40° 32.220' N	105° 52.559' W
Helispot	H-189	40° 48.796' N	105° 38.756' W
Helispot	H-187	40° 50.250' N	105° 39.239' W
Helispot	H-137	40° 51.038' N	105° 48.500' W
Helispot	H-133	40° 50.677' N	105° 49.465' W
Helispot	H-139	40° 51.088' N	105° 47.476' W
Helispot	H-320	40° 41.830' N	105° 35.960' W
Helispot	H-135	40° 50.271' N	105° 48.506' W
Helispot	H-102	40° 48.470' N	105° 34.780' W
Helispot	H-90	40° 43.307' N	105° 51.818' W
Helispot	H-550	40° 26.930' N	105° 45.260' W
Helispot	H-485	40° 24.996' N	105° 28.186' W
Helispot	H-579	40° 22.349' N	105° 36.004' W
Helispot	H-525	40° 33.333' N	105° 48.438' W
Helispot	H-515	40° 31.573' N	105° 47.410' W
Helispot	H-535	40° 31.583' N	105° 48.473' W
Helispot	H-176	40° 46.933' N	105° 43.875' W
Helispot	H-145	40° 45.750' N	105° 44.420' W
Helispot	H-140	40° 44.763' N	105° 44.843' W
Helispot	H-141	40° 44.750' N	105° 47.100' W
Helispot	H-95	40° 41.533' N	105° 49.317' W
Helispot	H-470	40° 28.482' N	105° 27.567' W
Helispot	H-395	40° 33.982' N	105° 35.495' W
Helispot	H-520	40° 30.048' N	105° 36.004' W
Helispot	H-491	40° 24.216' N	105° 32.415' W
Helispot	H-190	40° 51.135' N	105° 37.811' W
Helispot	H-476	40° 28.620' N	105° 22.330' W
Helispot	H-477	40° 27.480' N	105° 20.935' W
Helispot	H-155	40° 43.710' N	105° 43.240' W
Helispot	H-89	40° 41.697' N	105° 51.575' W
Helispot	H-147	40° 44.577' N	105° 43.385' W
Helispot	H-97	40° 44.303' N	105° 44.400' W
Helispot	H-96	40° 41.468' N	105° 47.707' W
Helispot	H-154	40° 42.550' N	105° 43.561' W
Helispot	H-94	40° 41.093' N	105° 48.127' W
Helispot	H-203	40° 44.678' N	105° 38.729' W
Helispot	H-440	40° 37.165' N	105° 21.379' W
Mobile Weather Unit	IRAWS 32	40° 48.619' N	105° 40.423' W
Mobile Weather Unit	IRAWS 35	40° 36.000' N	105° 51.059' W
Mobile Weather Unit	IRAWS 28	40° 34.080' N	105° 35.339' W
Mobile Weather Unit	IRAWS 29	40° 42.727' N	105° 24.800' W
Other	UAS LIRZ 1	40° 27.031' N	105° 19.951' W
Repeater	CMD-10 (Crown Point)	40° 36.925' N	105° 39.777' W
Repeater	CMD-11	40° 36.397' N	105° 18.980' W
Repeater	CMD-12 (Deadman)	40° 49.789' N	105° 45.095' W
Repeater	CMD-8 (Glacier)	40° 41.925' N	105° 22.043' W
Repeater	CMD-9 (Diamond)	40° 30.851' N	105° 54.231' W
Repeater	Killpecker (UHF Hub)	40° 46.218' N	105° 42.962' W
Repeater	Buckhorn AirLink	40° 37.149' N	105° 19.773' W
Repeater	C2 Storm Mtn	40° 29.096' N	105° 23.109' W
Repeater	C1 Twin Sister	40° 17.359' N	105° 31.160' W
Repeater	Signal Peak Airlink	40° 31.537' N	105° 30.656' W
Resource Location		40° 31.665' N	105° 44.939' W
Resource Location		40° 28.649' N	105° 49.325' W
Resource Location		40° 30.691' N	105° 45.917' W
Retardant/Mud Pit	South MRB	40° 24.996' N	105° 28.186' W
Retardant/Mud Pit	North MRB	40° 36.706' N	105° 21.298' W
Safety Zone		40° 50.854' N	105° 45.014' W
Sling Site	S1	40° 35.710' N	105° 43.080' W
Unimproved Landing Area		40° 35.601' N	105° 43.157' W
Value at Risk		40° 45.009' N	105° 28.321' W
Value at Risk		40° 45.007' N	105° 48.722' W
Value at Risk		40° 27.658' N	105° 51.637' W
Value at Risk		40° 28.654' N	105° 49.338' W
Value at Risk		40° 28.530' N	105° 49.530' W
Value at Risk		40° 35.629' N	105° 42.860' W
Value at Risk		40° 36.792' N	105° 40.911' W
Value at Risk		40° 24.574' N	105° 38.531' W
Value at Risk		40° 22.358' N	105° 36.926' W
Value at Risk		40° 46.080' N	105° 41.112' W
Value at Risk		40° 46.060' N	105° 41.381' W
Value at Risk		40° 45.974' N	105° 41.189' W
Value at Risk		40° 45.992' N	105° 41.141' W
Value at Risk		40° 31.658' N	105° 47.995' W



# Air Ops

## Cameron Peak

### CO-ARF-000636

#### 10/22/2020 Day Shift

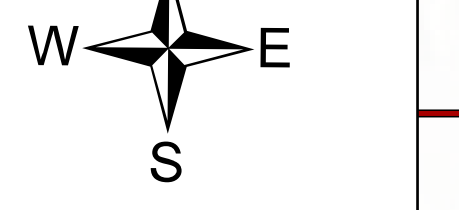
206,667 acres on 10/21/2020 @ 1526



- Aerial Hazard
- Camp
- Dip Site
- Drop Point
- Helibase
- Unimproved Landing Area
- Helispot
- Incident Command Post
- Mobile Weather Unit
- Repeater
- Resource Location
- Retardant/Mud Pit
- Safety Zone
- Sling Site
- Staging Area
- Water Source
- Value at Risk
- Division Break
- Branch Break
- 600ft Retardant Avoidance
- Uncontrolled Fire Edge
- Contained Line
- Completed Dozer Line
- Completed Hand Line
- Road as Completed Line
- Access or Improved Road
- Line Break Completed
- Proposed Dozer Line
- Fire Break Planned or Incomplete
- Planned Secondary Line
- UAS Launch and Recovery Zone
- 0.3765\_Cameron Peak
- Wilderness
- Wildfire Daily Fire Perimeter
- NHDWaterbody

IR acres 206,977 @ 2100  
20201021

- Isolated Heat
- Heat Perimeter
- Intense Heat
- Scattered Heat



Rocky Mountain IMT 1  
10/22/2020 0616  
Datum: North American 1983  
Lat/Long Grid

