

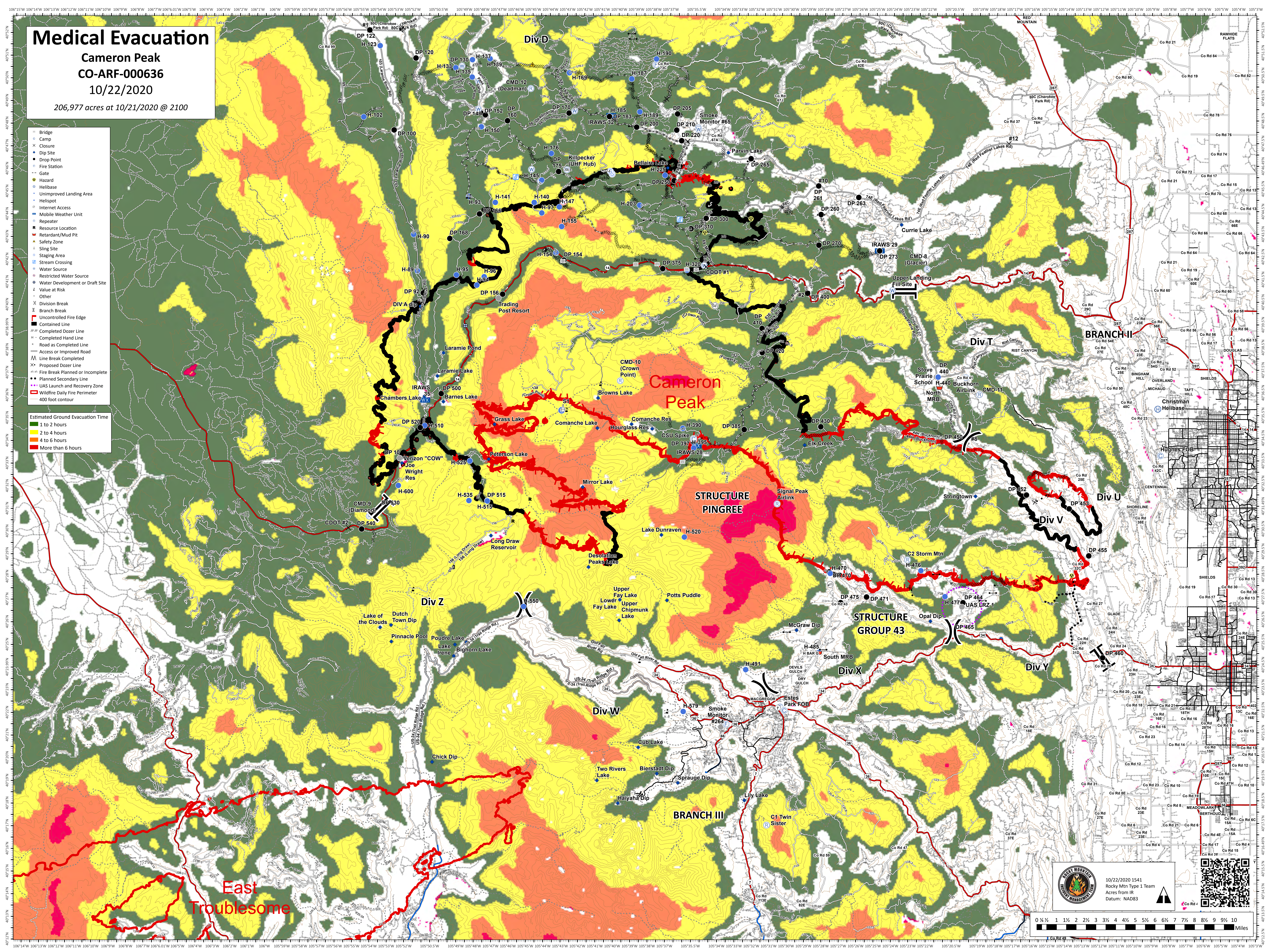
Medical Evacuation

Cameron Peak
CO-ARF-000636
10/22/2020

206,977 acres at 10/21/2020 @ 2100

- Bridge
- Camp
- Closure
- Dip Site
- Drop Point
- Fire Station
- Gate
- Hazard
- Helibase
- Unimproved Landing Area
- Helipost
- Internet Access
- Mobile Weather Unit
- Repeater
- Resource Location
- Retardant/Mud Pit
- Safety Zone
- Sling Site
- Staging Area
- Stream Crossing
- Water Source
- Restricted Water Source
- Water Development or Draft Site
- Value at Risk
- Other
- Division Break
- Branch Break
- Uncontrolled Fire Edge
- Contained Line
- Completed Dozer Line
- Completed Hand Line
- Road as Completed Line
- Access or Improved Road
- Line Break Completed
- Proposed Dozer Line
- Fire Break Planned or Incomplete
- Planned Secondary Line
- UAS Launch and Recovery Zone
- Wildfire Daily Fire Perimeter
- 400 foot contour

- Estimated Ground Evacuation Time
- 1 to 2 hours
 - 2 to 4 hours
 - 4 to 6 hours
 - More than 6 hours



10/22/2020 1541
Rocky Mtn Type 1 Team
Acres from IR
Datum: NAD83

