

Public Information Cameron Peak

CO-ARF-000636

10/22/2020

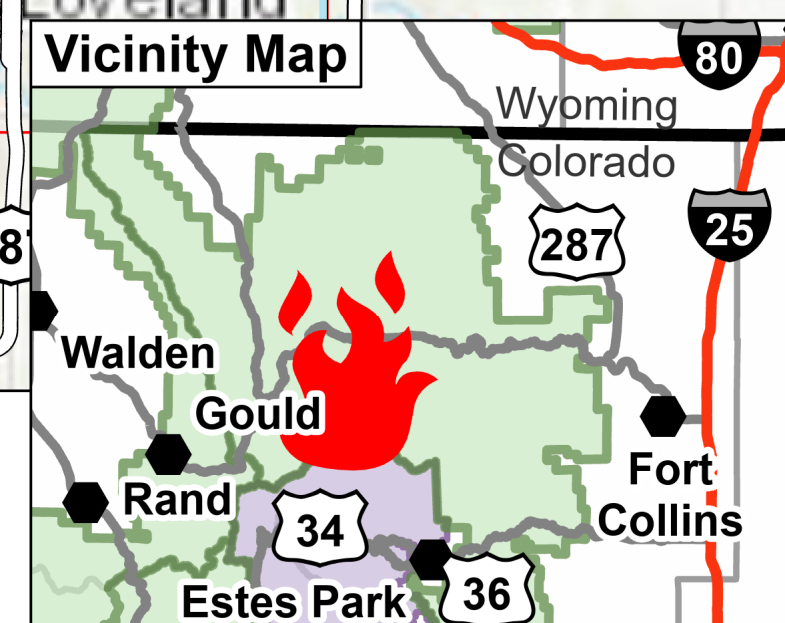
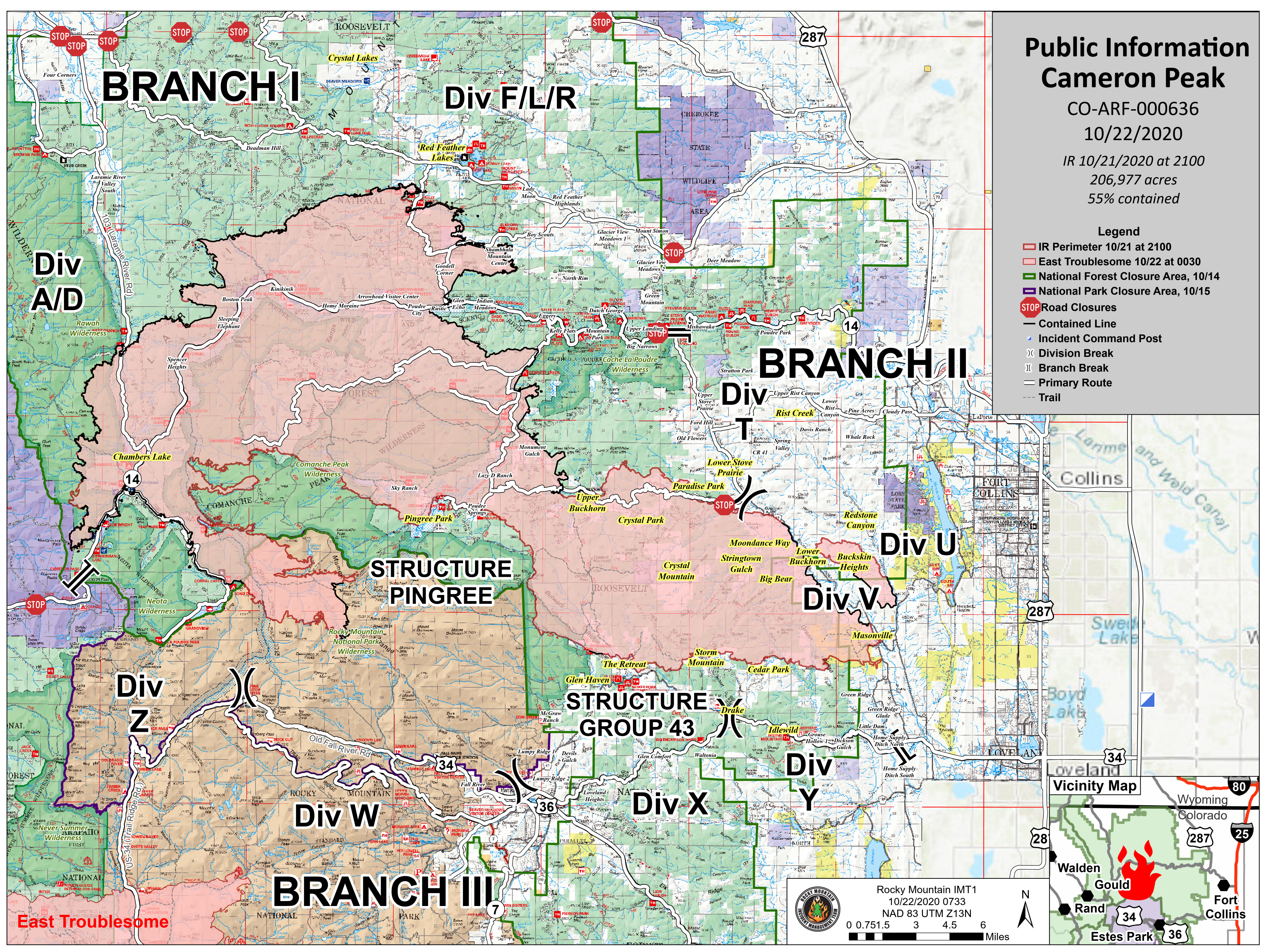
IR 10/21/2020 at 2100

206,977 acres

55% contained

Legend

- IR Perimeter 10/21 at 2100
- East Troublesome 10/22 at 0030
- National Forest Closure Area, 10/14
- National Park Closure Area, 10/15
- STOP Road Closures
- Contained Line
- Incident Command Post
- Division Break
- Branch Break
- Primary Route
- Trail



Rocky Mountain IMT1
10/22/2020 0733
NAD 83 UTM Z13N
0 0.751.5 3 4.5 6 Miles

BRANCH I

Div F/L/R

BRANCH II

Div T

Div U

Div V

Div Z

STRUCTURE GROUP 43

STRUCTURE PINGREE

Div W

Div X

Div Y

BRANCH III

East Troublesome