


106°15'W 106°12'W 106°9'W 106°6.01'W 106°3'W 106°W 105°57'W 105°54'W 105°51.01'W 105°48'W 105°45'W 105°42'W 105°39'W 105°36.01'W 105°33'W 105°30'W 105°27'W 105°24'W 105°21.01'W 105°18'W 105°15'W 105°12'W 105°9'W 105°6.01'W 105°3'W 105°W 104°57'W 104°54'W

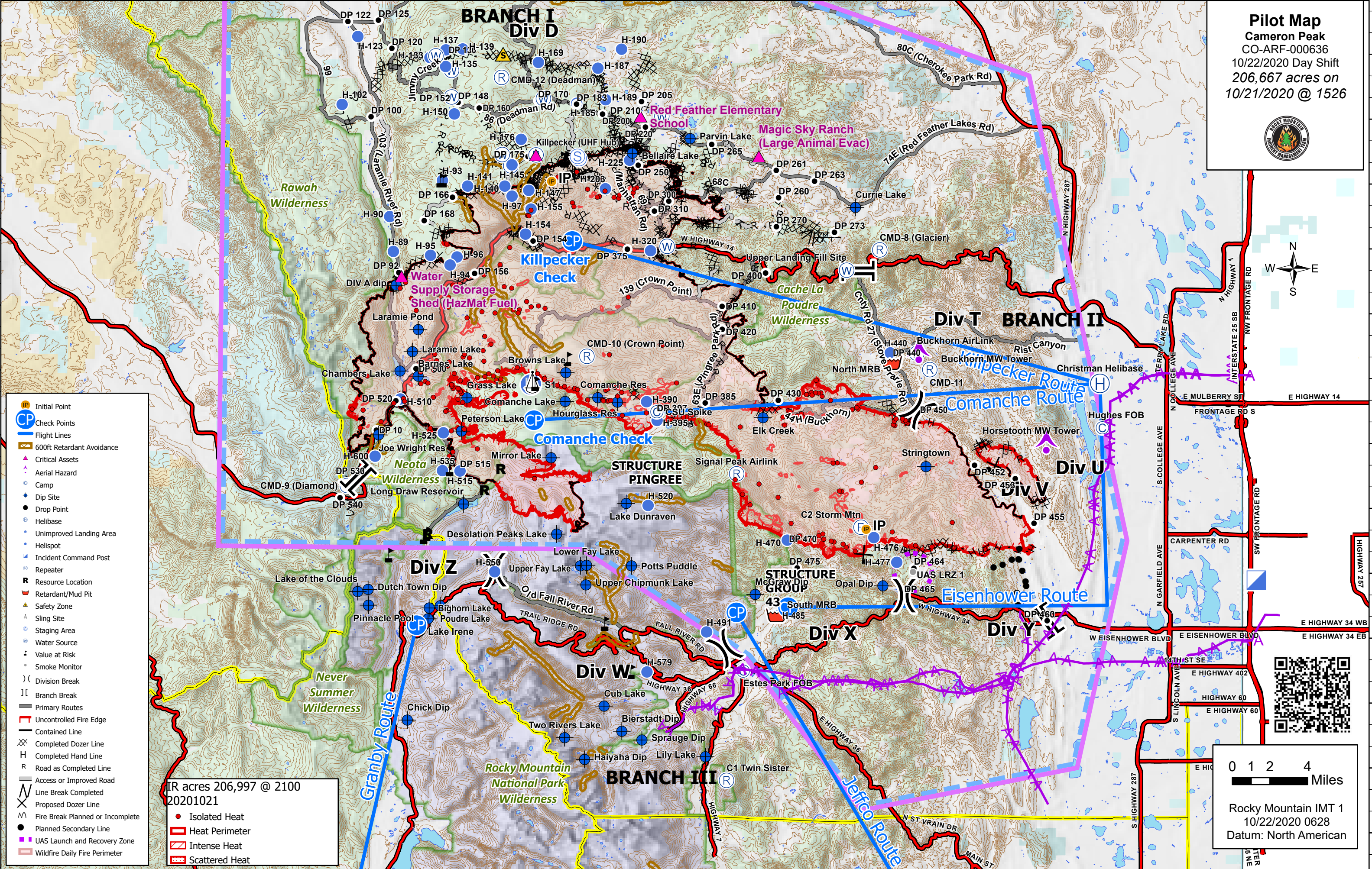
Pilot Map
Cameron Peak
 CO-ARF-000636
 10/22/2020 Day Shift
 206,667 acres on
 10/21/2020 @ 1526




- Initial Point
- Check Points
- Flight Lines
- 600ft Retardant Avoidance
- Critical Assets
- Aerial Hazard
- Camp
- Dip Site
- Drop Point
- Helibase
- Unimproved Landing Area
- Helispot
- Incident Command Post
- Repeater
- Resource Location
- Retardant/Mud Pit
- Safety Zone
- Sling Site
- Staging Area
- Water Source
- Value at Risk
- Smoke Monitor
- Division Break
- Branch Break
- Primary Routes
- Uncontrolled Fire Edge
- Contained Line
- Completed Dozer Line
- Completed Hand Line
- Road as Completed Line
- Access or Improved Road
- Line Break Completed
- Proposed Dozer Line
- Fire Break Planned or Incomplete
- Planned Secondary Line
- UAS Launch and Recovery Zone
- Wildfire Daily Fire Perimeter

IR acres 206,997 @ 2100
 20201021

- Isolated Heat
- Heat Perimeter
- Intense Heat
- Scattered Heat



0 1 2 4
 Miles

Rocky Mountain IMT 1
 10/22/2020 0628
 Datum: North American

106°12'W 106°9'W 106°6.01'W 106°3'W 106°W 105°57'W 105°54'W 105°51.01'W 105°48'W 105°45'W 105°42'W 105°39'W 105°36.01'W 105°33'W 105°30'W 105°27'W 105°24'W 105°21.01'W 105°18'W 105°15'W 105°12'W 105°9'W 105°6.01'W 105°3'W 105°W 104°57'W 104°54'W