

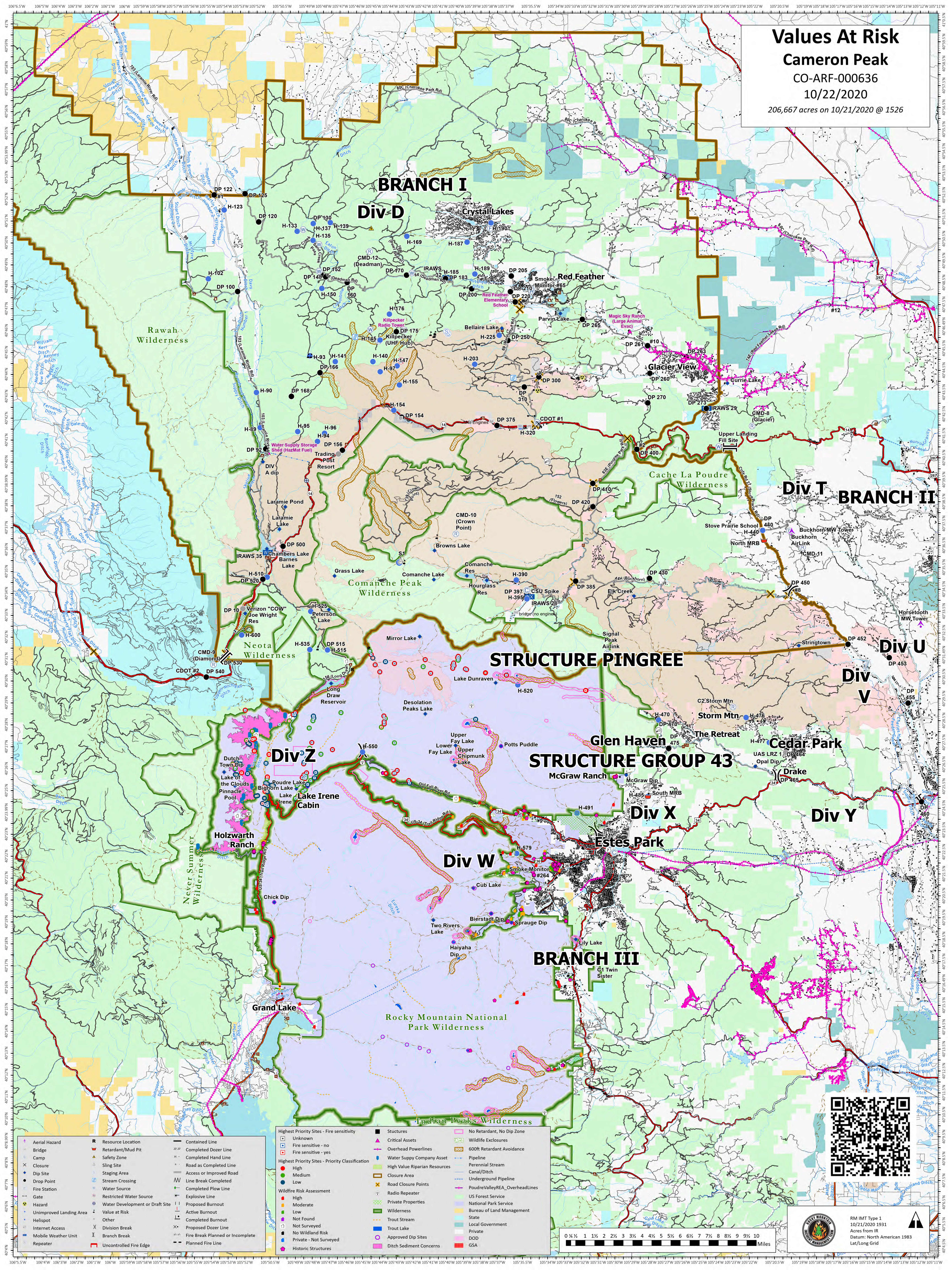
Values At Risk

Cameron Peak

CO-ARF-000636

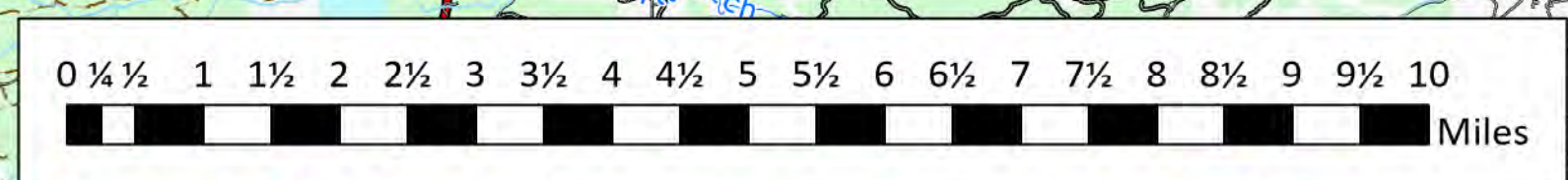
10/22/2020

206,667 acres on 10/21/2020 @ 1526



Aerial Hazard	Resource Location	Contained Line
Bridge	Retardant/Mud Pit	Completed Dozer Line
Camp	Safety Zone	Completed Hand Line
Closure	Sling Site	Road as Completed Line
Dip Site	Staging Area	Access or Improved Road
Drop Point	Stream Crossing	Line Break Completed
Fire Station	Water Source	Completed Plow Line
Hazard	Restricted Water Source	Explosive Line
Unimproved Landing Area	Water Development or Draft Site	Proposed Burnout
Helispot	Value at Risk	Active Burnout
Internet Access	Other	Completed Burnout
Mobile Weather Unit	Division Break	Proposed Dozer Line
Repeater	Branch Break	Fire Break Planned or Incomplete
	Uncontrolled Fire Edge	Planned Fire Line

Unknown	Structures	No Retardant, No Dip Zone
Fire sensitive - no	Critical Assets	Wildlife Exlosures
Fire sensitive - yes	Overhead Powerlines	600ft Retardant Avoidance
Highest Priority Sites - Priority Classification	Water Supply Company Asset	Pipeline
High	High Value Riparian Resources	Perennial Stream
Medium	Closure Area	Canal/Ditch
Low	Road Closure Points	Underground Pipeline
Wildfire Risk Assessment	Radio Repeater	PoudreValleyREA_OverheadLines
High	Private Properties	US Forest Service
Moderate	Wilderness	National Park Service
Low	Trout Stream	Bureau of Land Management
Not Found	Approved Dip Sites	State
Not Surveyed	Private - Not Surveyed	Local Government
No Wildland Risk	Ditch Sediment Concerns	Private
Private - Not Surveyed		DOD
Historic Structures		GSA



RM IMT Type 1
10/21/2020 1931
Acres from IR
Datum: North American 1983
Lat/Long Grid