

Evacuation Planning Map

10/23/2020

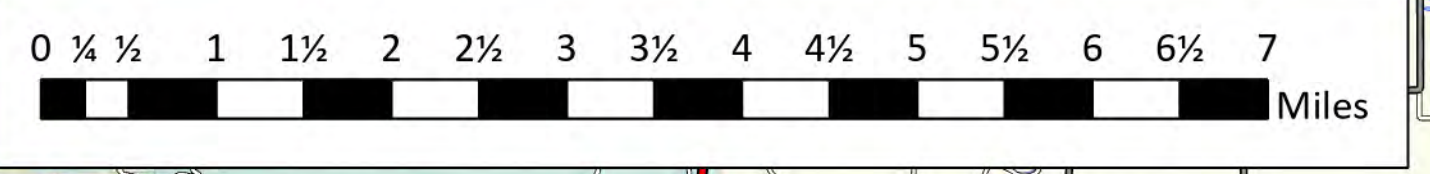
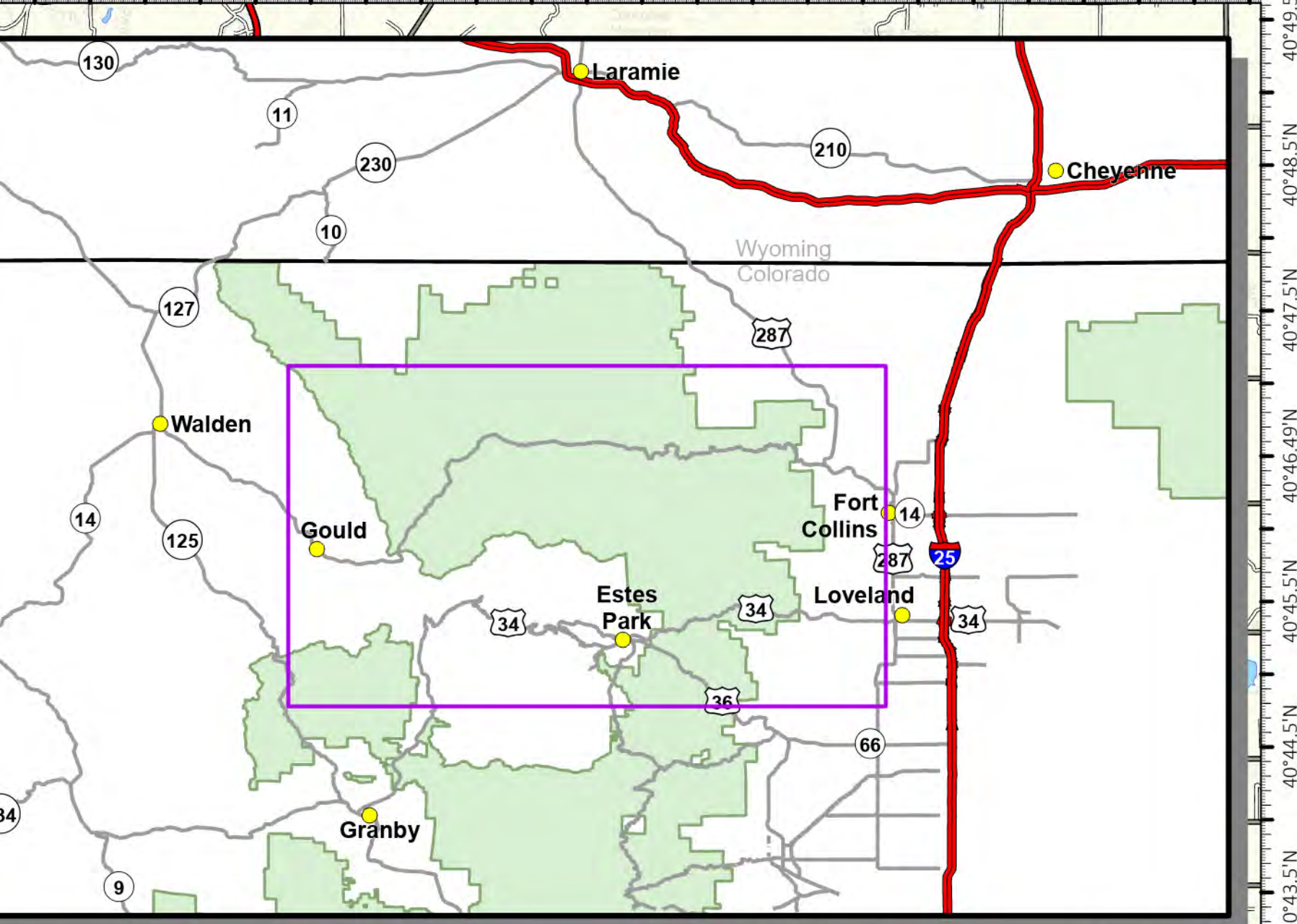
Cameron Peak
CO-ARF-000636

206,977 acres at 10/21/20 @ 2100

East Troublesome East Zone

WY-MRF-000408

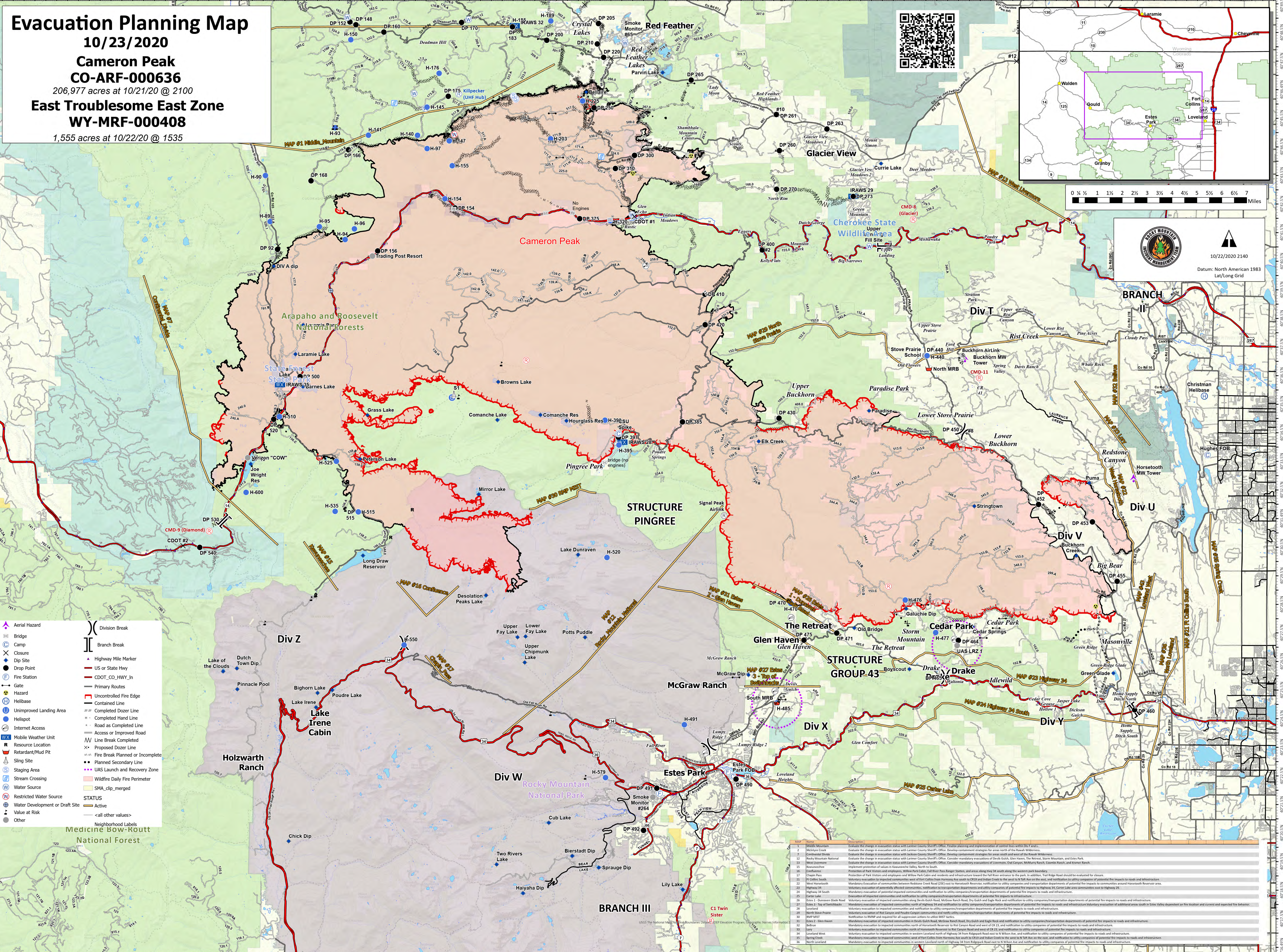
1,555 acres at 10/22/20 @ 1535



10/22/2020 2140
Datum: North American 1983
Lat/Long Grid

- Aerial Hazard
 - Bridge
 - Camp
 - Closure
 - Drop Point
 - Fire Station
 - Gate
 - Hazard
 - Helibase
 - Unimproved Landing Area
 - Helispot
 - Internet Access
 - Mobile Weather Unit
 - Resource Location
 - Retardant/Mud Pit
 - Sling Site
 - Staging Area
 - Stream Crossing
 - Water Source
 - Restricted Water Source
 - Water Development or Draft Site
 - Value at Risk
 - Other
- Division Break
 - Branch Break
 - Highway Mile Marker
 - US or State Hwy
 - CDOT_CO_HWY_In
 - Primary Routes
 - Uncontrolled Fire Edge
 - Contained Line
 - Completed Dozer Line
 - Completed Hand Line
 - Road as Completed Line
 - Access or Improved Road
 - Line Break Completed
 - Proposed Dozer Line
 - Fire Break Planned or Incomplete
 - Planned Secondary Line
 - UAS Launch and Recovery Zone
 - Wildfire Daily Fire Perimeter
 - SMA_clip_merged
- STATUS
- Active
 - <all other values>
- Neighborhood Labels
- Medicine Bow-Routt National Forest

Medicine Bow-Routt National Forest



1	Middle Mountain	Evaluate the change in evacuation status with Larimer County Sheriff's Office. Finalize planning and implementation of control lines within Div F and L.
2	Holmes Creek	Evaluate the change in evacuation status with Larimer County Sheriff's Office. Develop containment strategies for areas north of the Raak Wilderness.
3	Confidential Divide	Evaluate the change in evacuation status with Larimer County Sheriff's Office. Develop containment strategies for areas south and west of the Raak Wilderness.
12	Rocky Mountain National	Evaluate the change in evacuation status with Larimer County Sheriff's Office. Consider mandatory evacuations of Devils Gulch, Glen Haven, The Retreat, Storm Mountain, and Estes Park.
13	West Larimer	Evaluate the change in evacuation status with Larimer County Sheriff's Office. Consider mandatory evacuations of Lonerose, Old Camp, Midway Ranch, Combs Ranch, and Pioneer Ranch.
14	Kawawatchee	Implement protection of values in Kawawatchee Valley North to South.
15	Protections of Park Visitors and employees	Without Park Closures, Park Ranger Stations, and areas along Hwy 34 south along the western park boundary.
16	Chapin Pass	Protection of Park Visitors and employees and Willow Park Cabin and residents and infrastructure toward the Fall River entrance to the park. In addition, Fall Ridge Road should be evaluated for closure.
17	Chapin South	Voluntary evacuation of impacted communities north of Highway 34 and notification to utility companies/transportation departments of potential fire impacts to roads and infrastructure.
18	West Horsetooth	Mandatory evacuation of communities between Redstone Creek Road (25) east to Horsetooth Reservoir; notification to utility companies and transportation departments of potential fire impacts to communities around Horsetooth Reservoir area.
19	Highway 34	Mandatory evacuation of potential impacted communities and notification to utility companies/transportation departments of potential fire impacts to Highway 34. Carter Lake was communities east to Highway 25.
20	Highway 34 South	Mandatory evacuation of potential impacted communities and notification to utility companies/transportation departments of potential fire impacts to roads and infrastructure.
21	Carter Lake	Evacuation of impacted communities and notification to utility companies/transportation departments of potential fire impacts to infrastructure.
22	Estes 1 - Downstream Glade Road	Voluntary evacuation of impacted communities along Downstream Glade Road, McGraw Ranch Road, Dry Gulch and Eagle Rock and notification to utility companies/transportation departments of potential fire impacts to roads and infrastructure.
23	Estes 2 - Top of Saddlebacks	Mandatory evacuation of impacted communities north of Highway 34 and notification to utility companies/transportation departments of potential fire impacts to roads and infrastructure.
24	Estes 3 - Top of Saddlebacks	Voluntary evacuation of impacted communities north of Highway 34 and notification to utility companies/transportation departments of potential fire impacts to roads and infrastructure.
25	Estes 4 - Top of Saddlebacks	Voluntary evacuation of impacted communities north of Highway 34 and notification to utility companies/transportation departments of potential fire impacts to roads and infrastructure.
26	Estes 5 - Top of Saddlebacks	Voluntary evacuation of impacted communities north of Highway 34 and notification to utility companies/transportation departments of potential fire impacts to roads and infrastructure.
27	Estes 6 - Top of Saddlebacks	Voluntary evacuation of impacted communities north of Highway 34 and notification to utility companies/transportation departments of potential fire impacts to roads and infrastructure.
28	Estes 7 - Top of Saddlebacks	Voluntary evacuation of impacted communities north of Highway 34 and notification to utility companies/transportation departments of potential fire impacts to roads and infrastructure.
29	North Stove Prairie	Notification to MHP and required for all suppression actions to utilize MHP tactics.
30	MAP M07	Mandatory evacuation of impacted communities in Devils Gulch Road, Midway Ranch Road, Dry Gulch and Eagle Rock and notification to utility companies/transportation departments of potential fire impacts to roads and infrastructure.
31	Estes 2 - One Haven	Mandatory evacuation to impacted communities north of Horsetooth Reservoir to Red Canyon Road and west of CR 21, and notification to utility companies of potential fire impacts to roads and infrastructure.
32	Bellevue	Mandatory evacuation to impacted communities north of Horsetooth Reservoir to Red Canyon Road and west of CR 21, and notification to utility companies of potential fire impacts to roads and infrastructure.
33	Bellevue	Mandatory evacuation to impacted communities north of Horsetooth Reservoir to Red Canyon Road and west of CR 21, and notification to utility companies of potential fire impacts to roads and infrastructure.
34	Lowland West	Voluntary evacuation to impacted communities in western Lowland north of Highway 34 from Ridgepark Road east to N Wilson Ave, and notification to utility companies of potential fire impacts to roads and infrastructure.
35	Spring Creek	Mandatory evacuation to impacted communities north of Spring Creek from Horsetooth Reservoir south to N Wilson Ave and notification to utility companies of potential fire impacts to roads and infrastructure.
36	North Lowland	Mandatory evacuation to impacted communities in western Lowland north of Highway 34 from Ridgepark Road east to N Wilson Ave and notification to utility companies of potential fire impacts to roads and infrastructure.