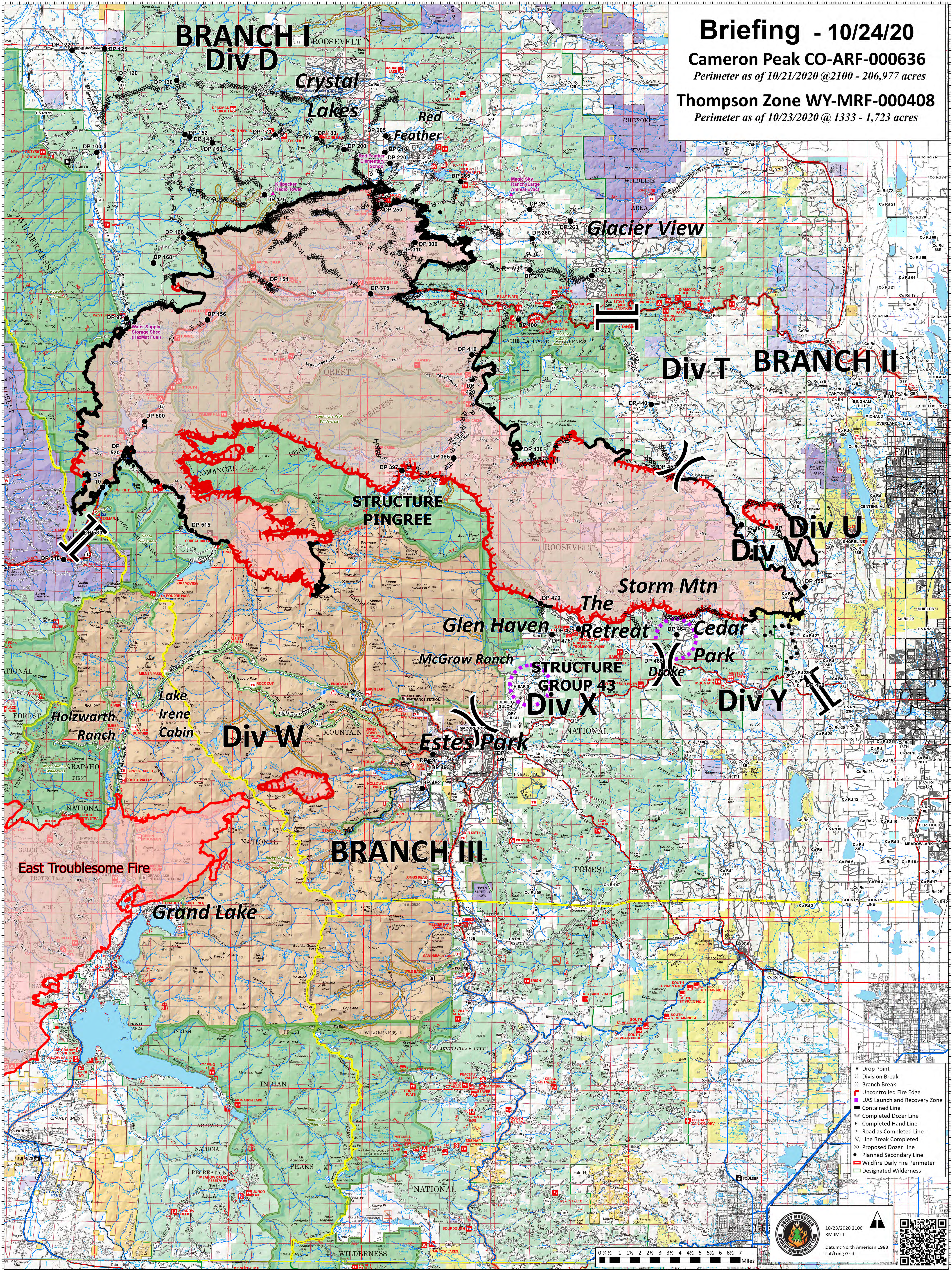


BRANCH I Div D

Briefing - 10/24/20

Cameron Peak CO-ARF-000636
Perimeter as of 10/21/2020 @ 2100 - 206,977 acres

Thompson Zone WY-MRF-000408
Perimeter as of 10/23/2020 @ 1333 - 1,723 acres



Crystal Lakes

Red Feather

Glacier View

Div T BRANCH II

STRUCTURE PINGREE

Div U Div V

Storm Mtn

The Retreat

Cedar

STRUCTURE GROUP 43

Park Drake

Div Y

Div W

Estes Park

BRANCH III

East Troublesome Fire

Grand Lake

- Drop Point
- ⌘ Division Break
- ⌘ Branch Break
- ▬ Uncontrolled Fire Edge
- ▬ UAS Launch and Recovery Zone
- ▬ Contained Line
- ▬ Completed Dozer Line
- ▬ Completed Hand Line
- ▬ Road as Completed Line
- ▬ Line Break Completed
- ▬ Planned Secondary Line
- ▬ Wildfire Daily Fire Perimeter
- ▬ Designated Wilderness



10/23/2020 2106
RM IMT1
Datum: North American 1983
Lat/Long Grid

