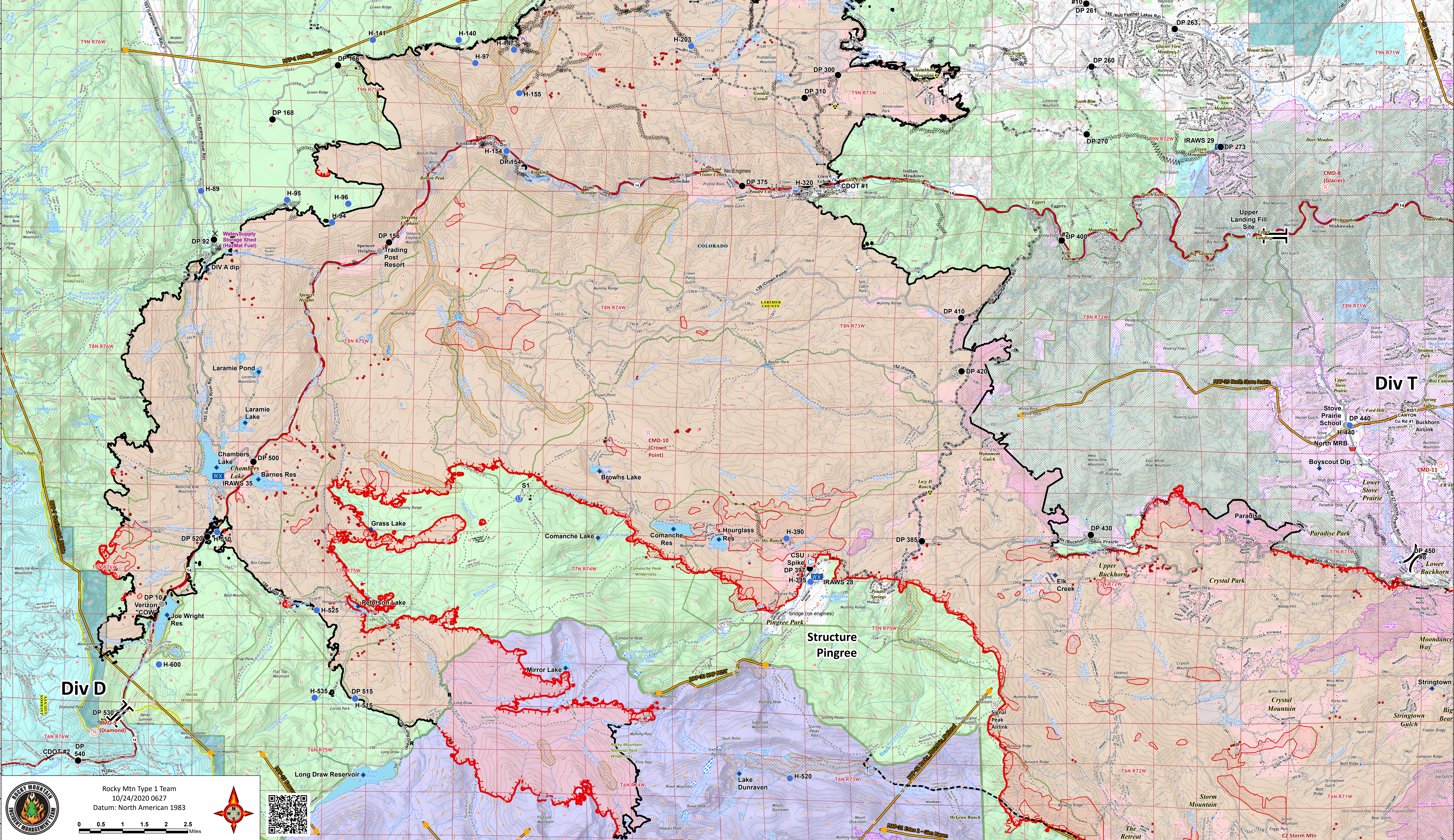


Operations North
10/24/20
Cameron Peak CO-ARF-000636
Perimeter as of 10/21/20 @ 2100 206,977 ac.
Thompson Zone WY-MRF-000408
Perimeter as of 10/23/20 @ 1333 1,723 ac.

- AirLink Repeater
- UHF Repeater
- Repeater
- Bridge
- Camp
- Closure
- Dip Site
- Drop Point
- Gate
- Hazard
- Unimproved Landing Area
- Helipad
- Internet Access
- Mobile Weather Unit
- Repeater
- Resource Location
- Retardant/Mud Pit
- Sling Site
- Staging Area
- Stream Crossing
- Water Source
- Restricted Water Source
- Water Development or Draft Site
- Value at Risk
- Other
- Division Break
- Branch Break
- Contained Line
- Completed Dozer Line
- Completed Hand Line
- Road as Completed Line
- Uncontrolled Fire Edge
- Access or Improved Road
- Line Break Completed
- Fire Break Planned or Incomplete
- Wildfire Daily Fire Perimeter
- Fire History
- Primary Line
- Last Chance Line
- Active MAPS 20201020
- IR 10/23/20 @ 2120 207,464 ac.
- Heat Perimeter
- Scattered Heat
- Intense Heat
- Isolated Heat



Rocky Mtn Type 1 Team
 10/24/2020 0627
 Datum: North American 1983

0 0.5 1 1.5 2 2.5 Miles

Div T

BRANCH I

Div D

Structure Pingree



USGS National Map Information Program (NIP) Bear Gulch