

# Ownership

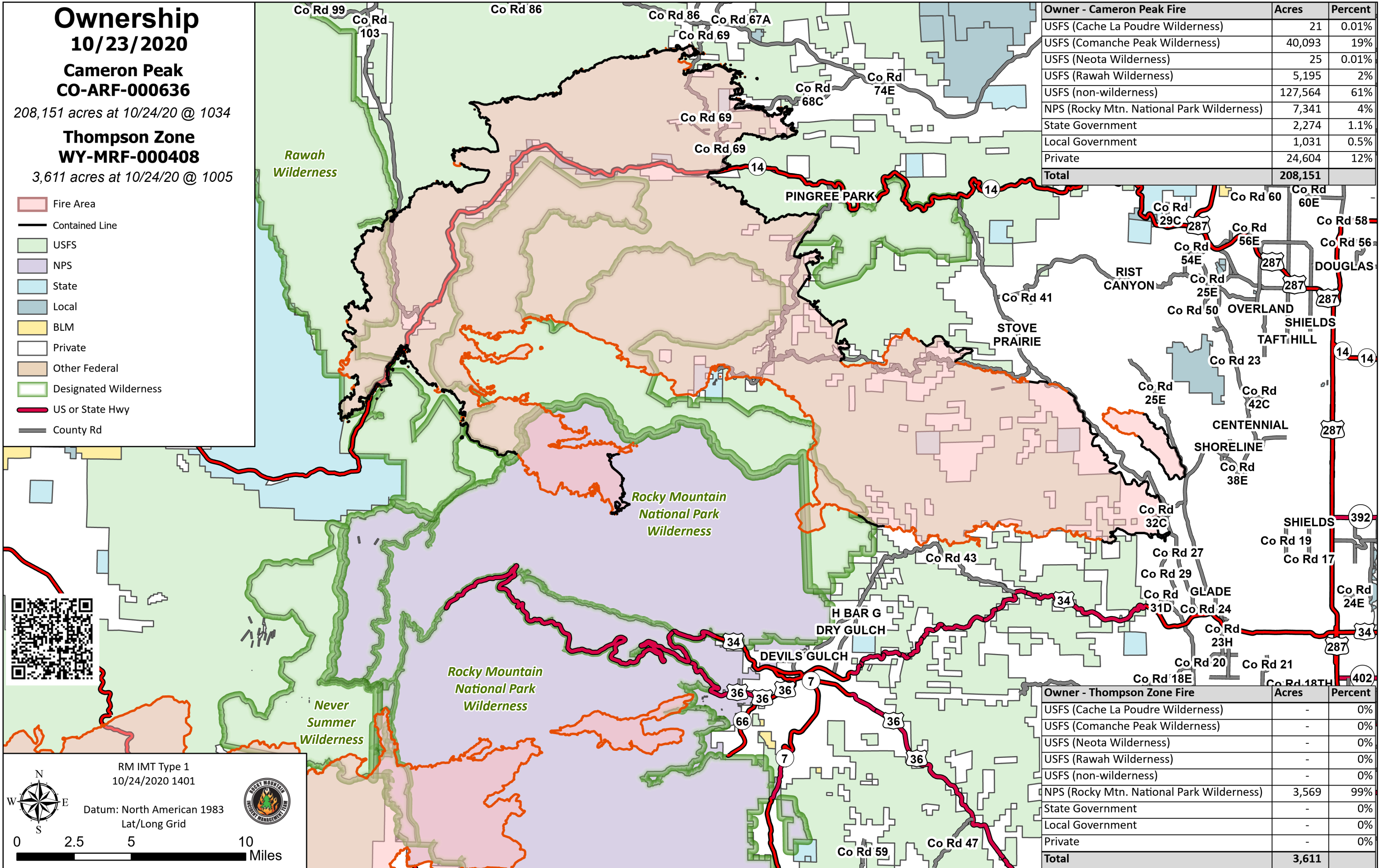
**10/23/2020**  
**Cameron Peak**  
**CO-ARF-000636**

208,151 acres at 10/24/20 @ 1034

**Thompson Zone**  
**WY-MRF-000408**

3,611 acres at 10/24/20 @ 1005

- Fire Area
- Contained Line
- USFS
- NPS
- State
- Local
- BLM
- Private
- Other Federal
- Designated Wilderness
- US or State Hwy
- County Rd



Owner - Cameron Peak Fire	Acres	Percent
USFS (Cache La Poudre Wilderness)	21	0.01%
USFS (Comanche Peak Wilderness)	40,093	19%
USFS (Neota Wilderness)	25	0.01%
USFS (Rawah Wilderness)	5,195	2%
USFS (non-wilderness)	127,564	61%
NPS (Rocky Mtn. National Park Wilderness)	7,341	4%
State Government	2,274	1.1%
Local Government	1,031	0.5%
Private	24,604	12%
<b>Total</b>	<b>208,151</b>	

Owner - Thompson Zone Fire	Acres	Percent
USFS (Cache La Poudre Wilderness)	-	0%
USFS (Comanche Peak Wilderness)	-	0%
USFS (Neota Wilderness)	-	0%
USFS (Rawah Wilderness)	-	0%
USFS (non-wilderness)	-	0%
NPS (Rocky Mtn. National Park Wilderness)	3,569	99%
State Government	-	0%
Local Government	-	0%
Private	-	0%
<b>Total</b>	<b>3,611</b>	



RM IMT Type 1  
 10/24/2020 1401

Datum: North American 1983  
 Lat/Long Grid