

Evacuation Planning Map

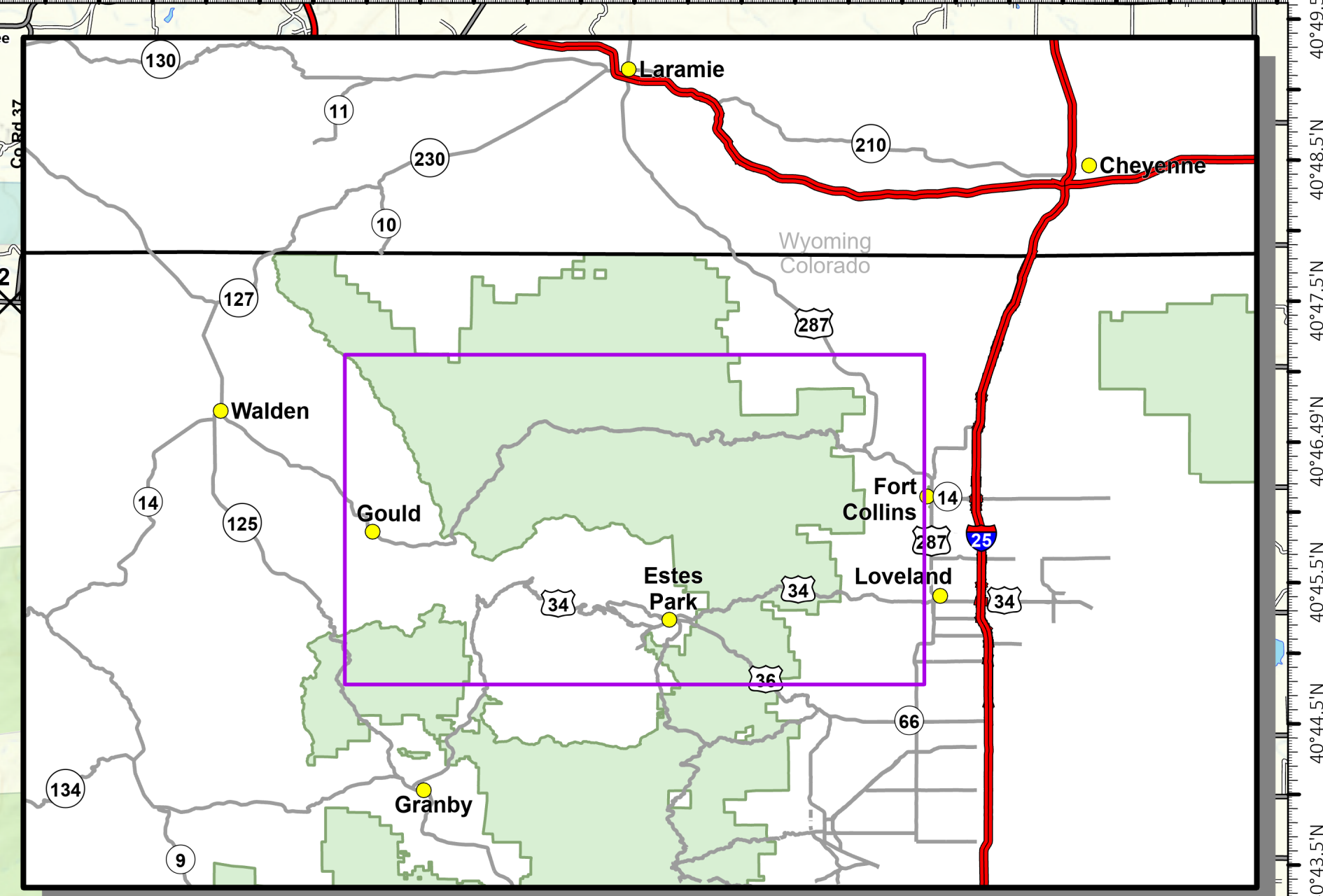
10/25/2020

**Cameron Peak
CO-ARF-000636**

208,663 acres at 10/24/20 @ 1703

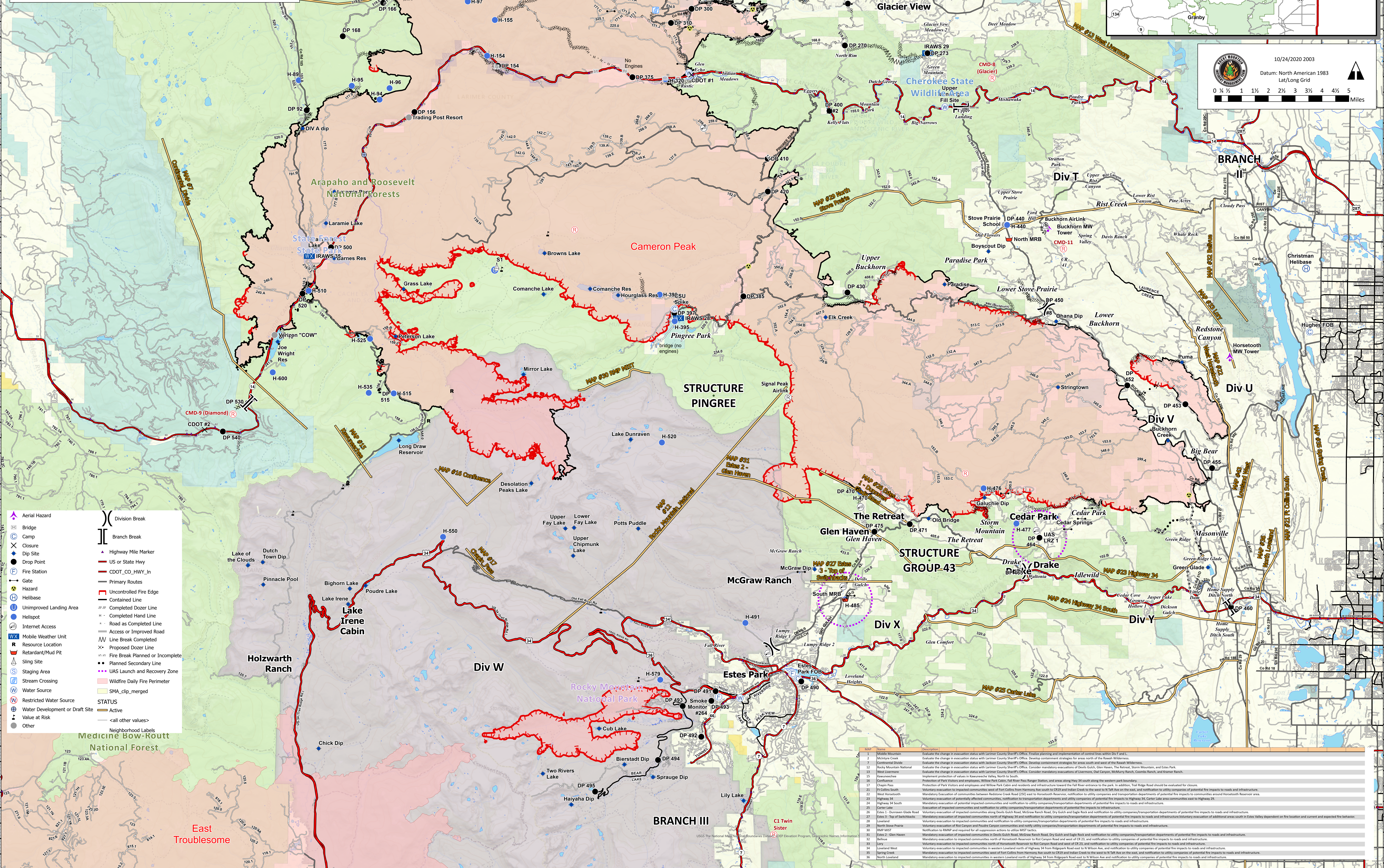
**Thompson Zone
WY-MRF-000408**

4,346 acres at 10/24/20 @ 1555



10/24/2020 2003
Datum: North American 1983
Lat/Long Grid

0 1/4 1/2 1 1 1/2 2 2 1/2 3 3 1/2 4 4 1/2 5 Miles



- Aerial Hazard
 - Bridge
 - Camp
 - Closure
 - Drop Point
 - Fire Station
 - Gate
 - Hazard
 - Helibase
 - Unimproved Landing Area
 - Helispot
 - Internet Access
 - Mobile Weather Unit
 - Resource Location
 - Retardant/Mud Pit
 - Sling Site
 - Staging Area
 - Stream Crossing
 - Water Source
 - Restricted Water Source
 - Water Development or Draft Site
 - Value at Risk
 - Other
- Division Break
 - Branch Break
 - Highway Mile Marker
 - US or State Hwy
 - CDOT_CO_HWY_In
 - Primary Routes
 - Uncontrolled Fire Edge
 - Contained Line
 - Completed Dozer Line
 - Completed Hand Line
 - Road as Completed Line
 - Access or Improved Road
 - Line Break Completed
 - Proposed Dozer Line
 - Fire Break Planned or Incomplete
 - Planned Secondary Line
 - UAS Launch and Recovery Zone
 - Wildfire Daily Fire Perimeter
 - SMA_clip_merged
- STATUS
- Active
 - <all other values>
- Neighborhood Labels

Map Sheet	Description
1	Middle Mountain
2	Valley Creek
3	Continental Divide
4	Rocky Mountain National
5	West Laramie
6	Kanawatchee
7	Protection of Park Visitors and employees; Willow Park Cabin and Responder Station; and areas along Hwy 34 south along the western park boundary.
8	Chapin Pass
9	Voluntary evacuation of impacted communities north of Highway 34 and notification to utility companies/transportation departments of potential fire impacts to roads and infrastructure.
10	West Horseshoe
11	Highway 34
12	Highway 34 South
13	Carver Lake
14	Evacuation of impacted communities and notification to utility companies/transportation departments of potential fire impacts to roads and infrastructure.
15	Evacuation of impacted communities north of Highway 34 and notification to utility companies/transportation departments of potential fire impacts to roads and infrastructure.
16	Evacuation of impacted communities north of Highway 34 and notification to utility companies/transportation departments of potential fire impacts to roads and infrastructure.
17	Evacuation of impacted communities north of Highway 34 and notification to utility companies/transportation departments of potential fire impacts to roads and infrastructure.
18	Evacuation of impacted communities north of Highway 34 and notification to utility companies/transportation departments of potential fire impacts to roads and infrastructure.
19	Evacuation of impacted communities north of Highway 34 and notification to utility companies/transportation departments of potential fire impacts to roads and infrastructure.
20	Evacuation of impacted communities north of Highway 34 and notification to utility companies/transportation departments of potential fire impacts to roads and infrastructure.
21	Evacuation of impacted communities north of Highway 34 and notification to utility companies/transportation departments of potential fire impacts to roads and infrastructure.
22	Evacuation of impacted communities north of Highway 34 and notification to utility companies/transportation departments of potential fire impacts to roads and infrastructure.
23	Evacuation of impacted communities north of Highway 34 and notification to utility companies/transportation departments of potential fire impacts to roads and infrastructure.
24	Evacuation of impacted communities north of Highway 34 and notification to utility companies/transportation departments of potential fire impacts to roads and infrastructure.
25	Evacuation of impacted communities north of Highway 34 and notification to utility companies/transportation departments of potential fire impacts to roads and infrastructure.
26	Evacuation of impacted communities north of Highway 34 and notification to utility companies/transportation departments of potential fire impacts to roads and infrastructure.
27	Evacuation of impacted communities north of Highway 34 and notification to utility companies/transportation departments of potential fire impacts to roads and infrastructure.
28	Evacuation of impacted communities north of Highway 34 and notification to utility companies/transportation departments of potential fire impacts to roads and infrastructure.
29	Evacuation of impacted communities north of Highway 34 and notification to utility companies/transportation departments of potential fire impacts to roads and infrastructure.
30	Evacuation of impacted communities north of Highway 34 and notification to utility companies/transportation departments of potential fire impacts to roads and infrastructure.
31	Evacuation of impacted communities north of Highway 34 and notification to utility companies/transportation departments of potential fire impacts to roads and infrastructure.
32	Evacuation of impacted communities north of Highway 34 and notification to utility companies/transportation departments of potential fire impacts to roads and infrastructure.
33	Evacuation of impacted communities north of Highway 34 and notification to utility companies/transportation departments of potential fire impacts to roads and infrastructure.
34	Evacuation of impacted communities north of Highway 34 and notification to utility companies/transportation departments of potential fire impacts to roads and infrastructure.
35	Evacuation of impacted communities north of Highway 34 and notification to utility companies/transportation departments of potential fire impacts to roads and infrastructure.
36	Evacuation of impacted communities north of Highway 34 and notification to utility companies/transportation departments of potential fire impacts to roads and infrastructure.