

Operations

10/25/20

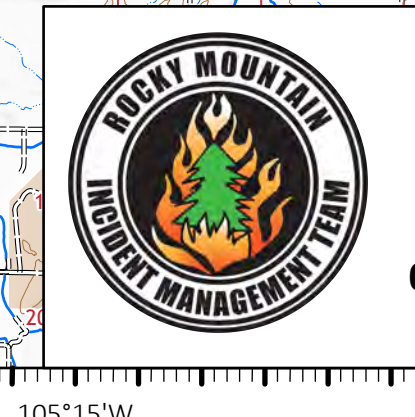
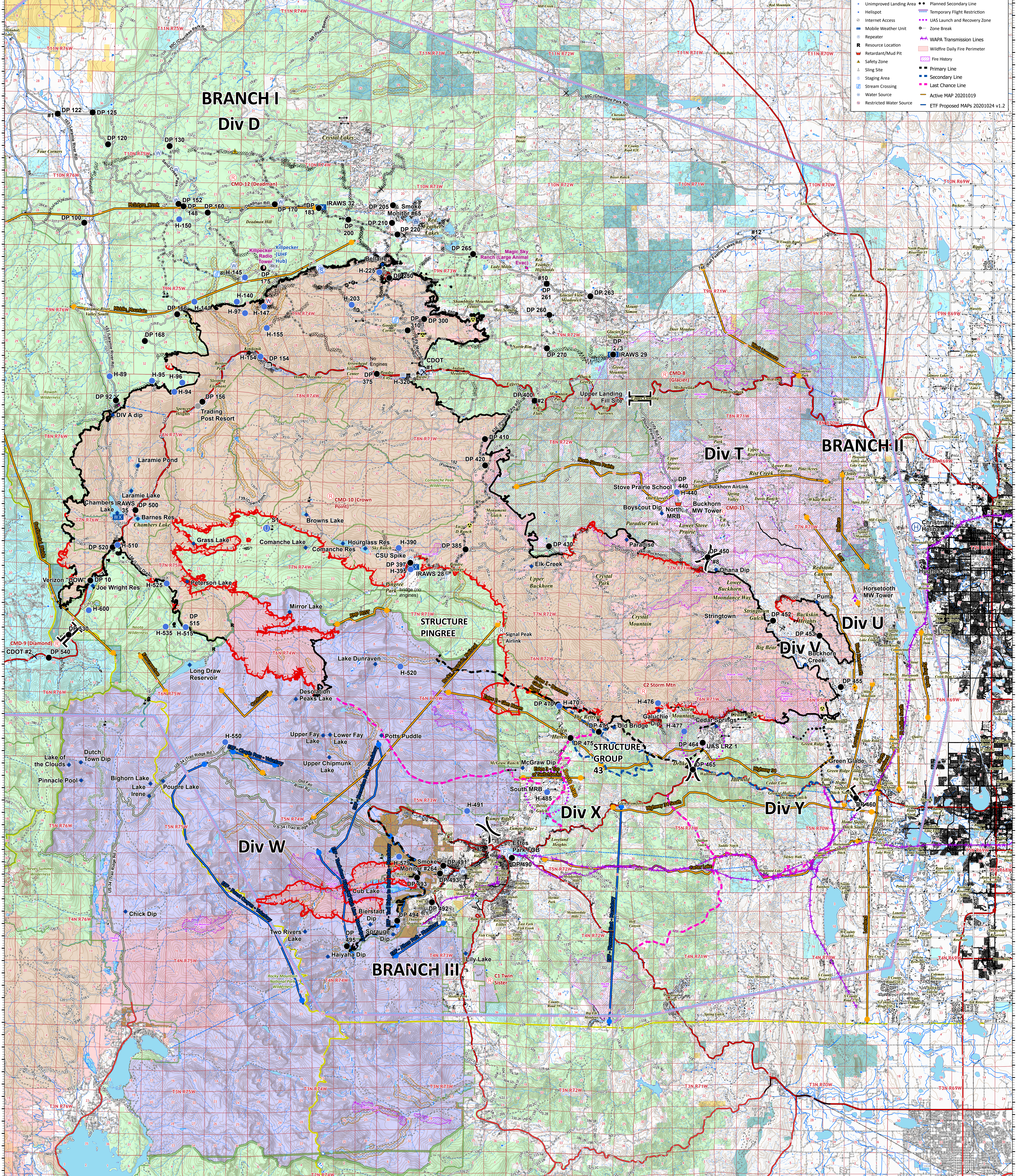
Cameron Peak CO-ARF-000636

MMA Perimeter as of 10/24/20 @ 1703 208,663 ac.

Thompson Zone WY-MRF-000408

MMA Perimeter as of 10/24/20 @ 1515 4,346 ac.

- AirLink Repeater
- UHF Repeater
- Repeater
- Aerial Hazard
- Bridge
- Camp
- Closure
- Dip Site
- Drop Point
- Fire Station
- Gate
- Hazard
- Helibase
- Unimproved Landing Area
- Helispot
- Internet Access
- Mobile Weather Unit
- Repeater
- Resource Location
- Retardant/Mud Pit
- Safety Zone
- Sling Site
- Staging Area
- Stream Crossing
- Water Source
- Restricted Water Source
- Water Development or Draft Site
- Value at Risk
- Division Break
- Branch Break
- Other
- Contained Line
- Completed Dozer Line
- Completed Hand Line
- Road as Completed Line
- Proposed Dozer Line
- Uncontrolled Fire Edge
- Access or Improved Road
- Line Break Completed
- Fire Break Planned or Incomplete
- Planned Secondary Line
- Temporary Flight Restriction
- UAS Launch and Recovery Zone
- Zone Break
- WAPA Transmission Lines
- Wildfire Daily Fire Perimeter
- Fire History
- Primary Line
- Secondary Line
- Last Contained Line
- Active MAP 20201019
- ETF Proposed MAPS 20201024 v1.2



Rocky Mtn Type 1 Team
10/24/2020 2012
Datum: North American 1983

0 1 2 3 4 5 Miles

