

Medical Evacuation

10/26/2020

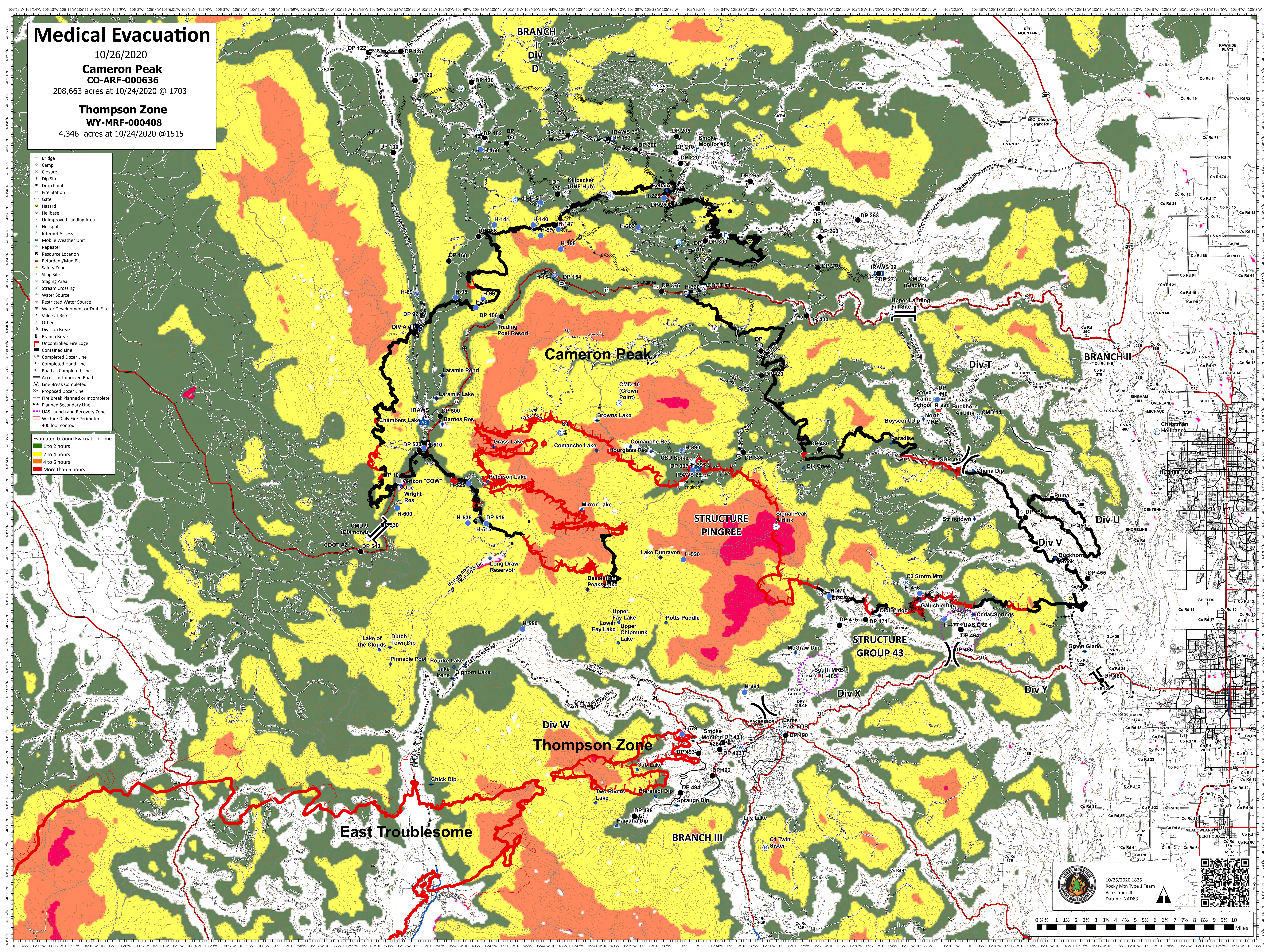
Cameron Peak
CO-ARF-000636

208,663 acres at 10/24/2020 @ 1703

Thompson Zone
WY-MRF-000408

4,346 acres at 10/24/2020 @ 1515

- Bridge
 - Camp
 - Closure
 - Dip Site
 - Drop Point
 - Fire Station
 - Gate
 - Hazard
 - Helibase
 - Unimproved Landing Area
 - Helispot
 - Internet Access
 - Mobile Weather Unit
 - Repeater
 - Resource Location
 - Retardant/Mud Pit
 - Safety Zone
 - Sling Site
 - Staging Area
 - Stream Crossing
 - Water Source
 - Restricted Water Source
 - Water Development or Draft Site
 - Value at Risk
 - Other
 - Division Break
 - Branch Break
 - Uncontrolled Fire Edge
 - Contained Line
 - Completed Dozer Line
 - Completed Hand Line
 - Road as Completed Line
 - Access or Improved Road
 - Line Break Completed
 - Fire Break Planned or Incomplete
 - Planned Secondary Line
 - UAS Launch and Recovery Zone
 - Wildfire Daily Fire Perimeter
 - 400 foot contour
- Estimated Ground Evacuation Time
- 1 to 2 hours
 - 2 to 4 hours
 - 4 to 6 hours
 - More than 6 hours



10/25/2020 1825
Rocky Mtn Type 1 Team
Acres from IR
Datum: NAD83

0 1/4 1/2 1 1 1/2 2 2 1/2 3 3 1/2 4 4 1/2 5 5 1/2 6 6 1/2 7 7 1/2 8 8 1/2 9 9 1/2 10
Miles