

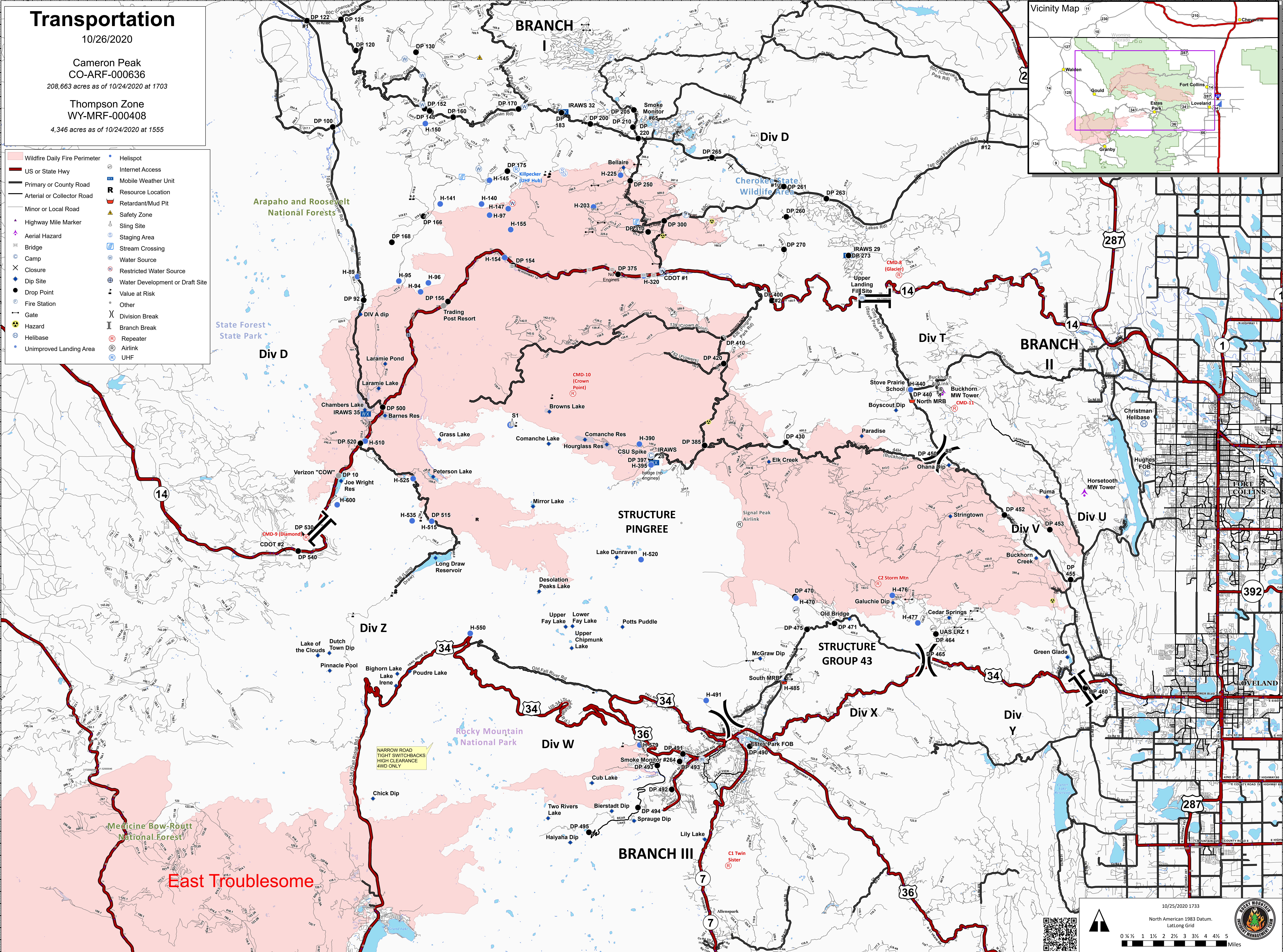
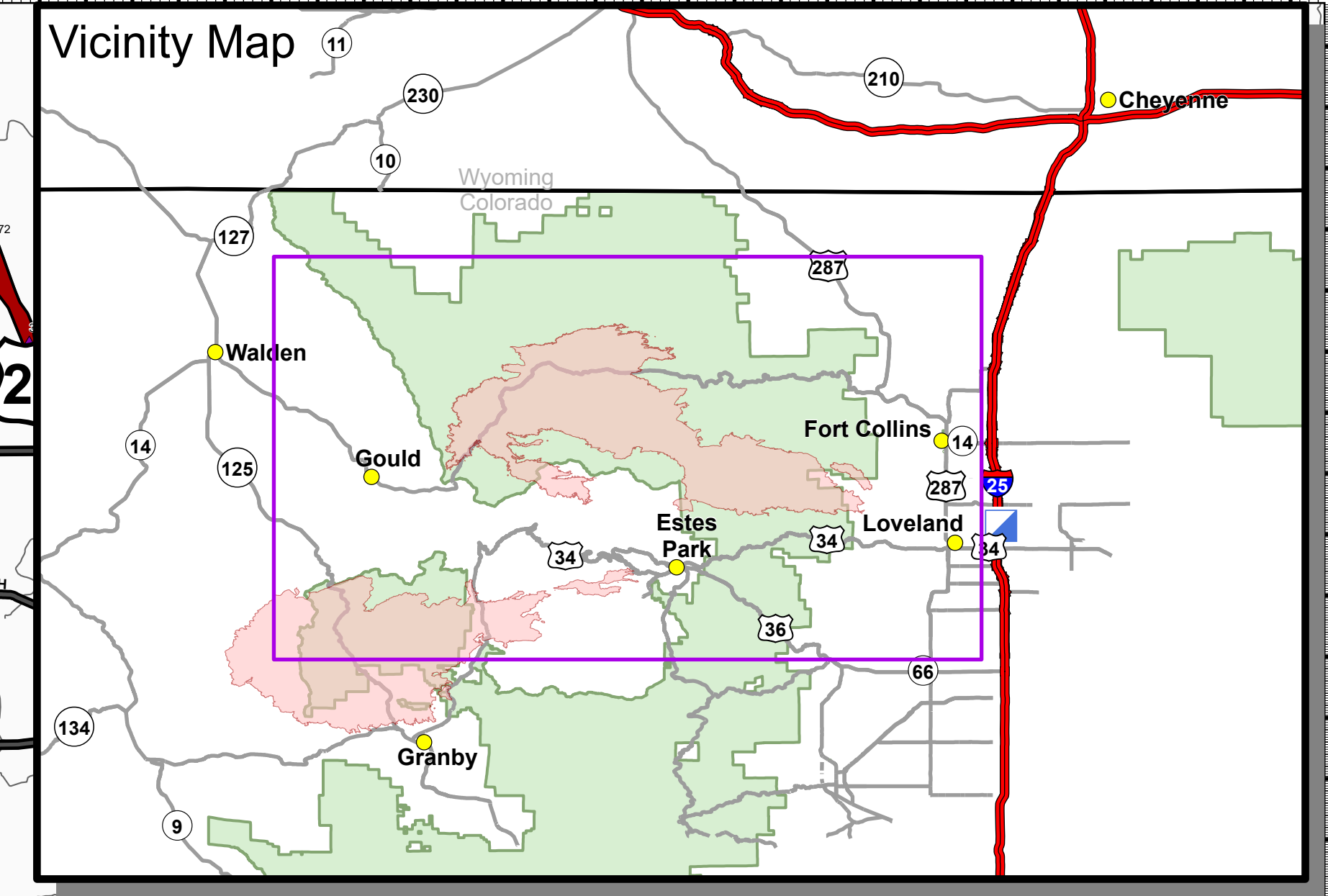
Transportation

10/26/2020

Cameron Peak
CO-ARF-000636
208,663 acres as of 10/24/2020 at 1703

Thompson Zone
WY-MRF-000408
4,346 acres as of 10/24/2020 at 1555

- Wildfire Daily Fire Perimeter
- US or State Hwy
- Primary or County Road
- Arterial or Collector Road
- Minor or Local Road
- Highway Mile Marker
- Aerial Hazard
- Bridge
- Camp
- Closure
- Dip Site
- Fire Station
- Gate
- Hazard
- Helibase
- Unimproved Landing Area
- Helispot
- Internet Access
- Mobile Weather Unit
- Resource Location
- Retardant/Mud Pit
- Safety Zone
- Sling Site
- Staging Area
- Stream Crossing
- Water Source
- Restricted Water Source
- Water Development or Draft Site
- Value at Risk
- Other
- Division Break
- Branch Break
- Repeater
- Airlink
- UHF



East Troublesome

NARROW ROAD
TIGHT SWITCHBACKS
HIGH CLEARANCE
4WD ONLY

10/25/2020 1733
North American 1983 Datum.
LatLong Grid