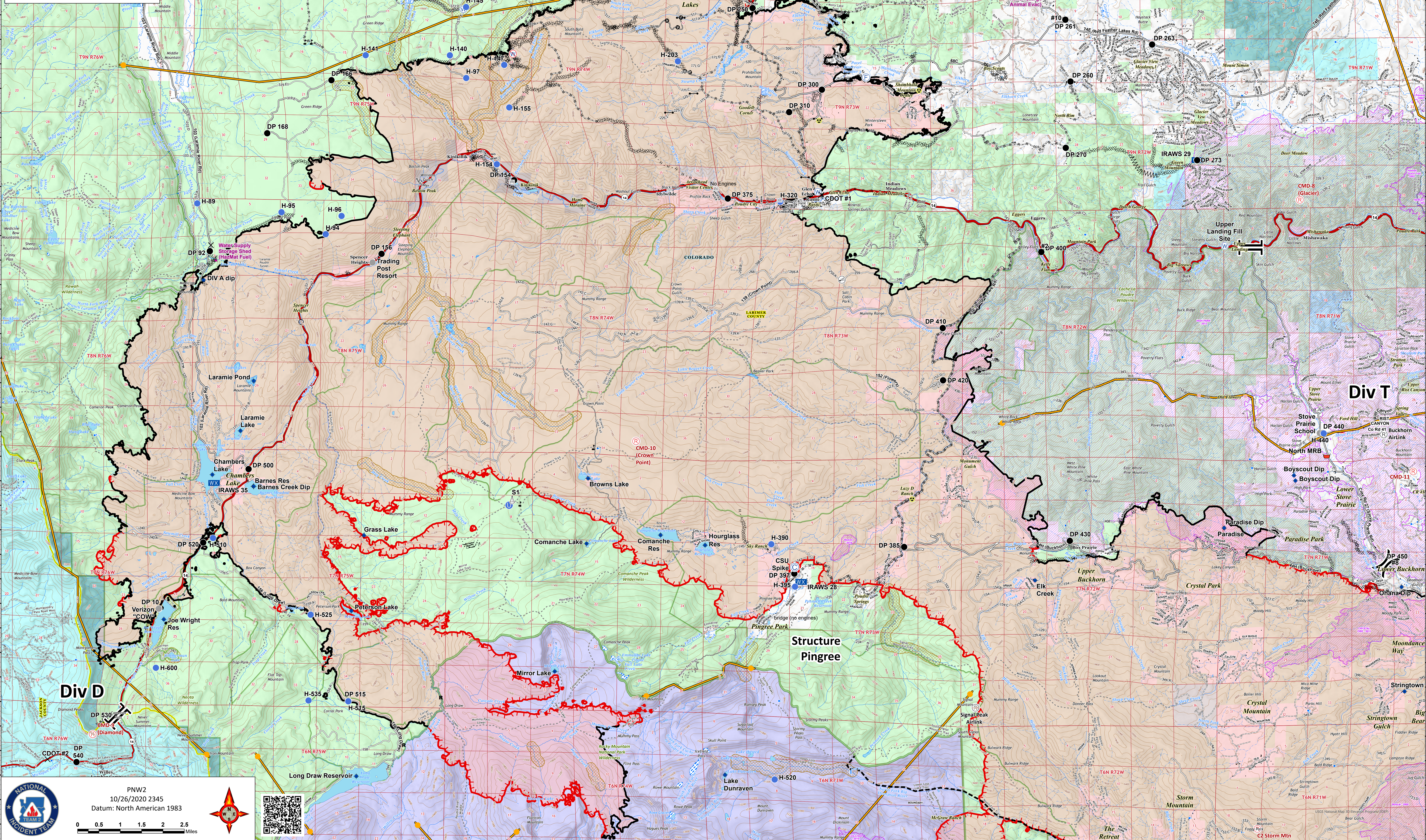

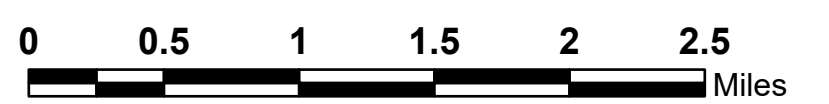

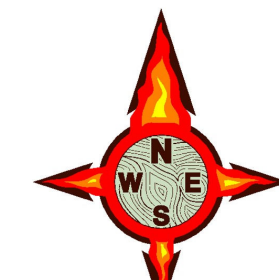


**Operations North**  
10/27/20  
Cameron Peak CO-ARF-000636  
MMA Perimeter 10/24/20 @ 1703 208,663 ac.  
Thompson Zone WY-MRF-000408  
MMA Perimeter 10/24/20 @ 1515 4,346 ac.

- AirLink Repeater
- UHF Repeater
- Repeater
- Bridge
- Camp
- Closure
- Dip Site
- Drop Point
- Fire Station
- Hazard
- Unimproved Landing Area
- Helispot
- Internet Access
- Mobile Weather Unit
- Repeater
- R Resource Location
- Retardant/Mud Pit
- Sling Site
- Staging Area
- Stream Crossing
- Water Source
- Restricted Water Source
- Water Development or Draft Site
- Value at Risk
- Other
- Division Break
- Branch Break
- Contained Line
- Completed Dozer Line
- Completed Hand Line
- Hazard
- Road as Completed Line
- Access or Improved Road
- Line Break Completed
- Fire Break Planned or Incomplete
- Zone Break
- Wildfire Daily Fire Perimeter
- Fire History
- Primary Line
- Last Chance Line
- Active



 PNW2  
10/26/2020 2345  
Datum: North American 1983



USGS National Map Information Program (NIP)  
Bear Gulch