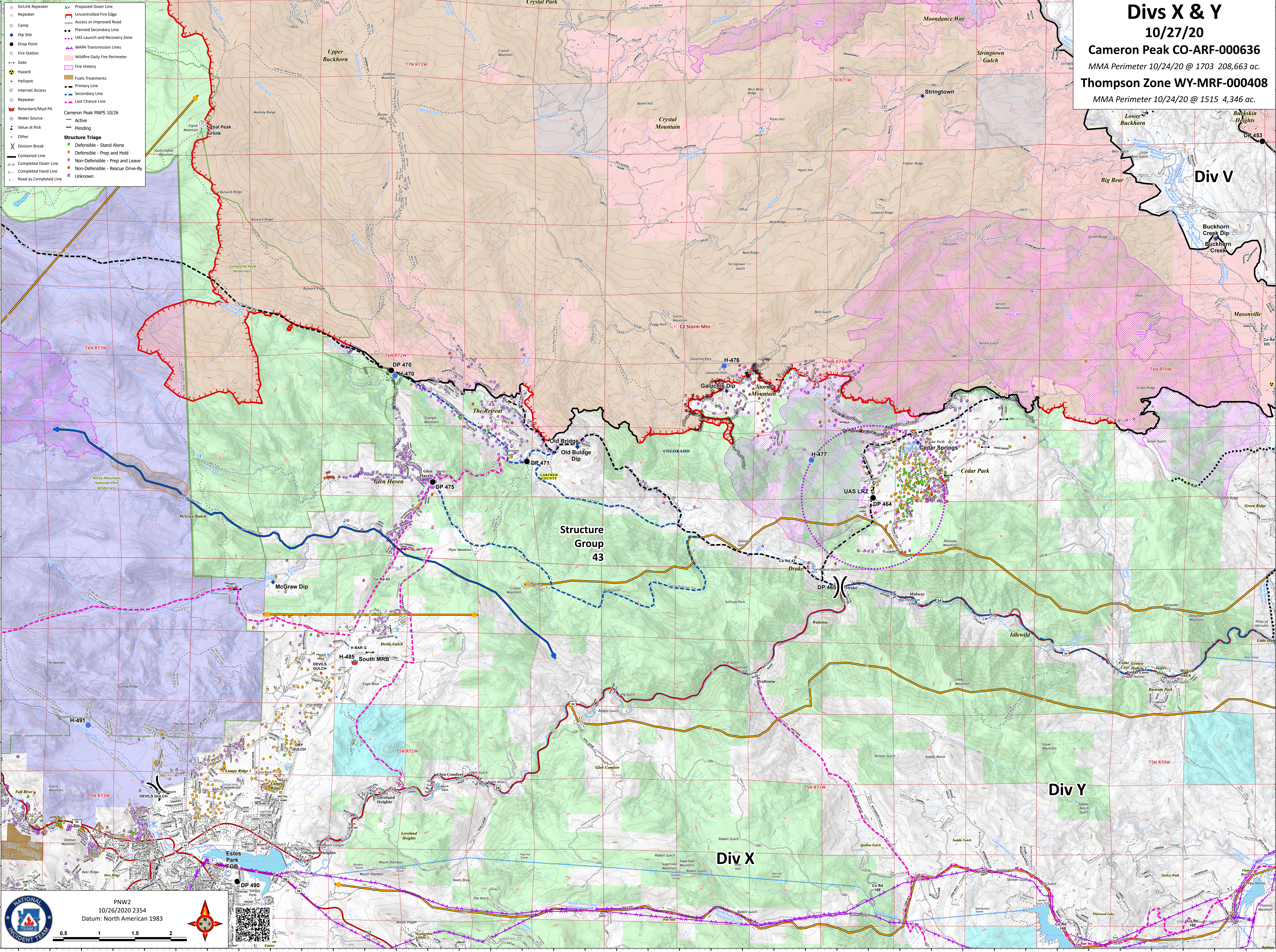


Divs X & Y
10/27/20
Cameron Peak CO-ARF-000636
 MMA Perimeter 10/24/20 @ 1703 208,663 ac.
Thompson Zone WY-MRF-000408
 MMA Perimeter 10/24/20 @ 1515 4,346 ac.

- AirLink Repeater
- Repeater
- Camp
- Dip Site
- Drop Point
- Fire Station
- Gate
- Hazard
- Heliport
- Internet Access
- Repeater
- Retardant/Mud Pit
- Water Source
- Value at Risk
- Other
- Division Break
- Contained Line
- Completed Dozer Line
- Completed Hand Line
- Road as Completed Line
- Proposed Dozer Line
- Uncontrolled Fire Edge
- Access or Improved Road
- Planned Secondary Line
- UAS Launch and Recovery Zone
- WAPA Transmission Lines
- Wildfire Daily Fire Perimeter
- Fire History
- Fuels Treatments
- Primary Line
- Secondary Line
- Last Chance Line
- Cameron Peak MAPS 10/26
- Active
- Pending
- Structure Triage
- Defensible - Stand Alone
- Defensible - Prep and Hold
- Non-Defensible - Prep and Leave
- Non-Defensible - Rescue Drive-By
- Unknown



NATIONAL INCIDENT TEAM

PNW2
 10/26/2020 2354
 Datum: North American 1983

0.5 1 1.5 2