

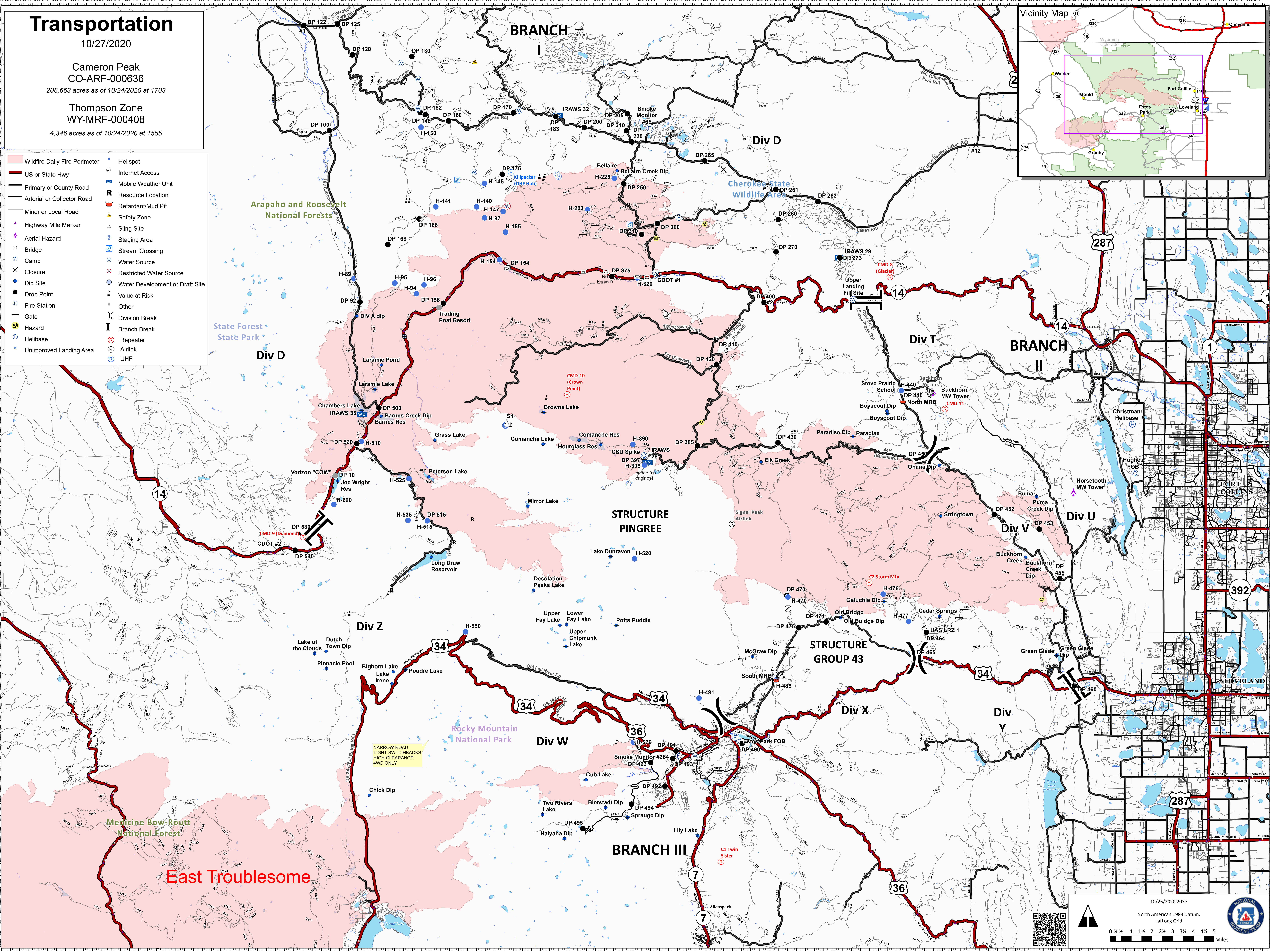
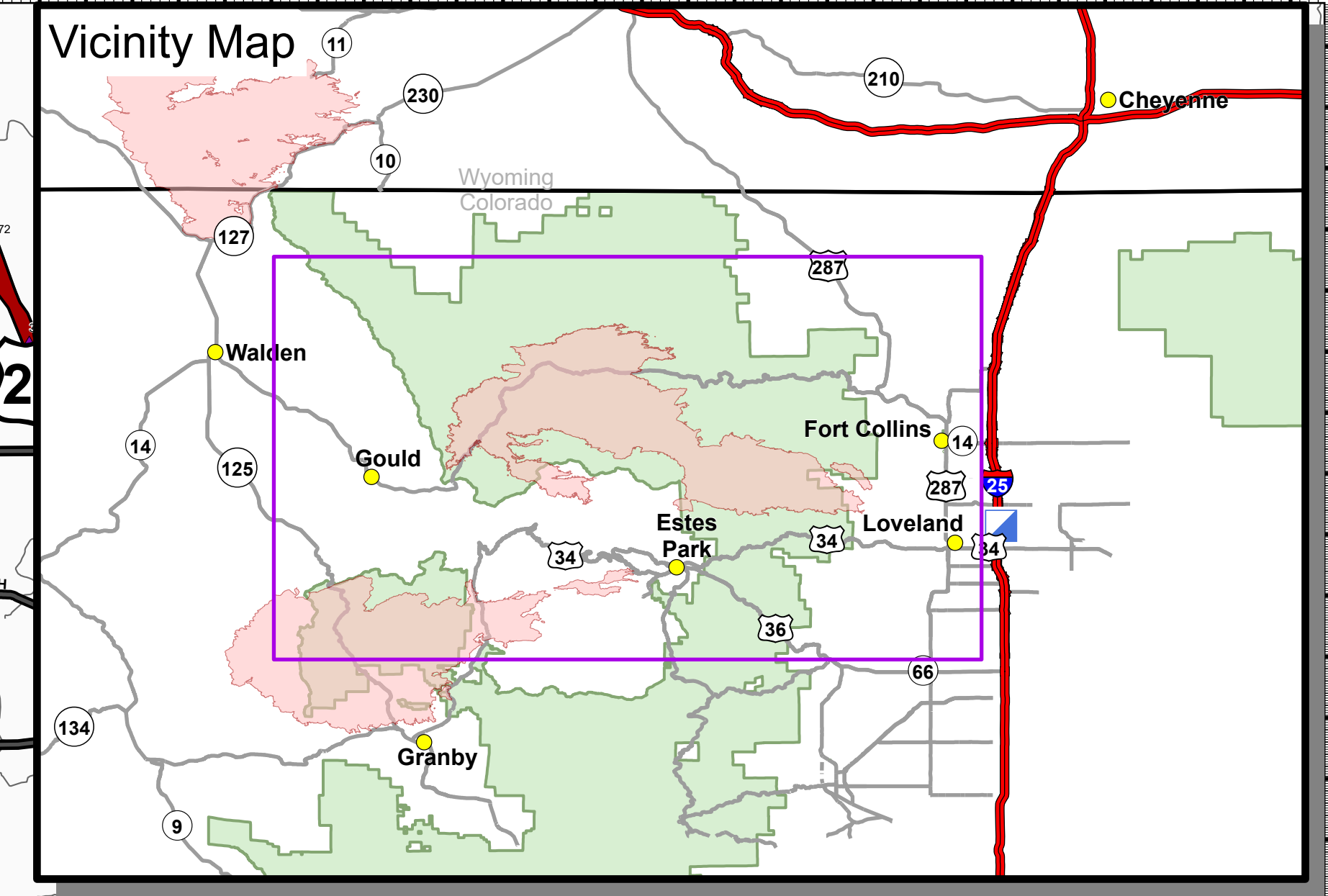
# Transportation

10/27/2020

Cameron Peak  
CO-ARF-000636  
208,663 acres as of 10/24/2020 at 1703

Thompson Zone  
WY-MRF-000408  
4,346 acres as of 10/24/2020 at 1555

- Wildfire Daily Fire Perimeter
- US or State Hwy
- Primary or County Road
- Arterial or Collector Road
- Minor or Local Road
- Highway Mile Marker
- Aerial Hazard
- Bridge
- Camp
- Closure
- Dip Site
- Drop Point
- Fire Station
- Gate
- Hazard
- Helibase
- Unimproved Landing Area
- Helispot
- Internet Access
- Mobile Weather Unit
- Resource Location
- Retardant/Mud Pit
- Safety Zone
- Sling Site
- Staging Area
- Stream Crossing
- Water Source
- Restricted Water Source
- Water Development or Draft Site
- Value at Risk
- Other
- Division Break
- Branch Break
- Repeater
- Airlink
- UHF



NARROW ROAD  
TIGHT SWITCHBACKS  
HIGH CLEARANCE  
4WD ONLY

10/26/2020 2037  
North American 1983 Datum.  
LatLong Grid