

Operations East

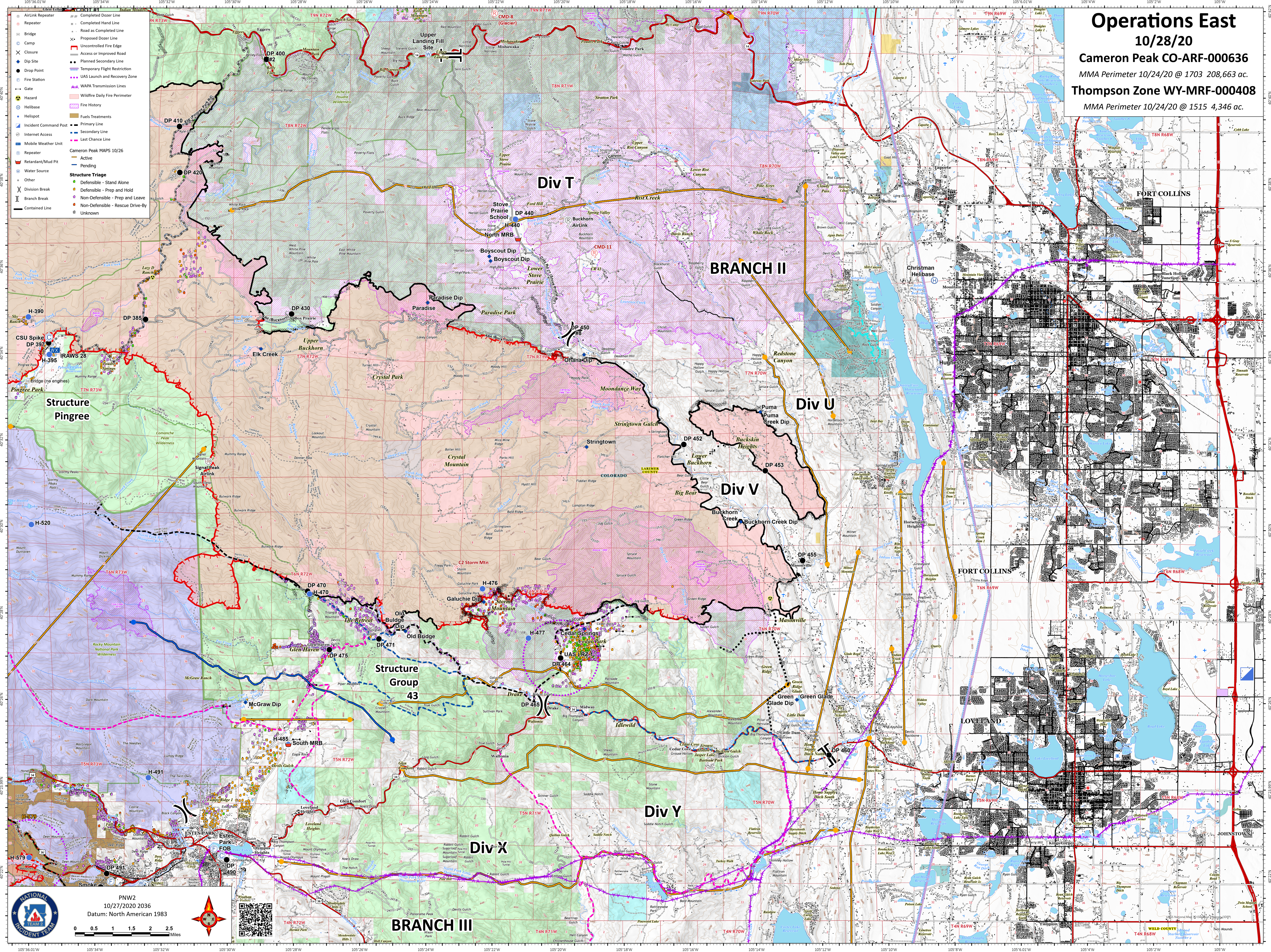
10/28/20

Cameron Peak CO-ARF-000636

MMA Perimeter 10/24/20 @ 1703 208,663 ac.

Thompson Zone WY-MRF-000408

MMA Perimeter 10/24/20 @ 1515 4,346 ac.



- AirLink Repeater
- Repeater
- Bridge
- Camp
- Closure
- Dip Site
- Drop Point
- Fire Station
- Hazard
- Helibase
- Helispot
- Incident Command Post
- Internet Access
- Mobile Weather Unit
- Repeater
- Retardant/Mud Pit
- Water Source
- Other
- Division Break
- Branch Break
- Contained Line
- Completed Dozer Line
- Road as Completed Line
- Proposed Dozer Line
- Uncontrolled Fire Edge
- Access or Improved Road
- Planned Secondary Line
- Temporary Flight Restriction
- UAS Launch and Recovery Zone
- WAPA Transmission Lines
- Wildfire Daily Fire Perimeter
- Fire History
- Fuels Treatments
- Primary Line
- Secondary Line
- Last Chance Line
- Cameron Peak MAPS 10/26
- Active
- Pending
- Structure Triage
- Other
- Defensible - Stand Alone
- Defensible - Prep and Hold
- Non-Defensible - Prep and Leave
- Non-Defensible - Rescue Drive-By
- Unknown

NATIONAL INCIDENT TEAM

PNW2
10/27/2020 2036
Datum: North American 1983

0 0.5 1 1.5 2 2.5 Miles

WELD COUNTY

Stout Fire/Rescue
Stout Fire/Rescue