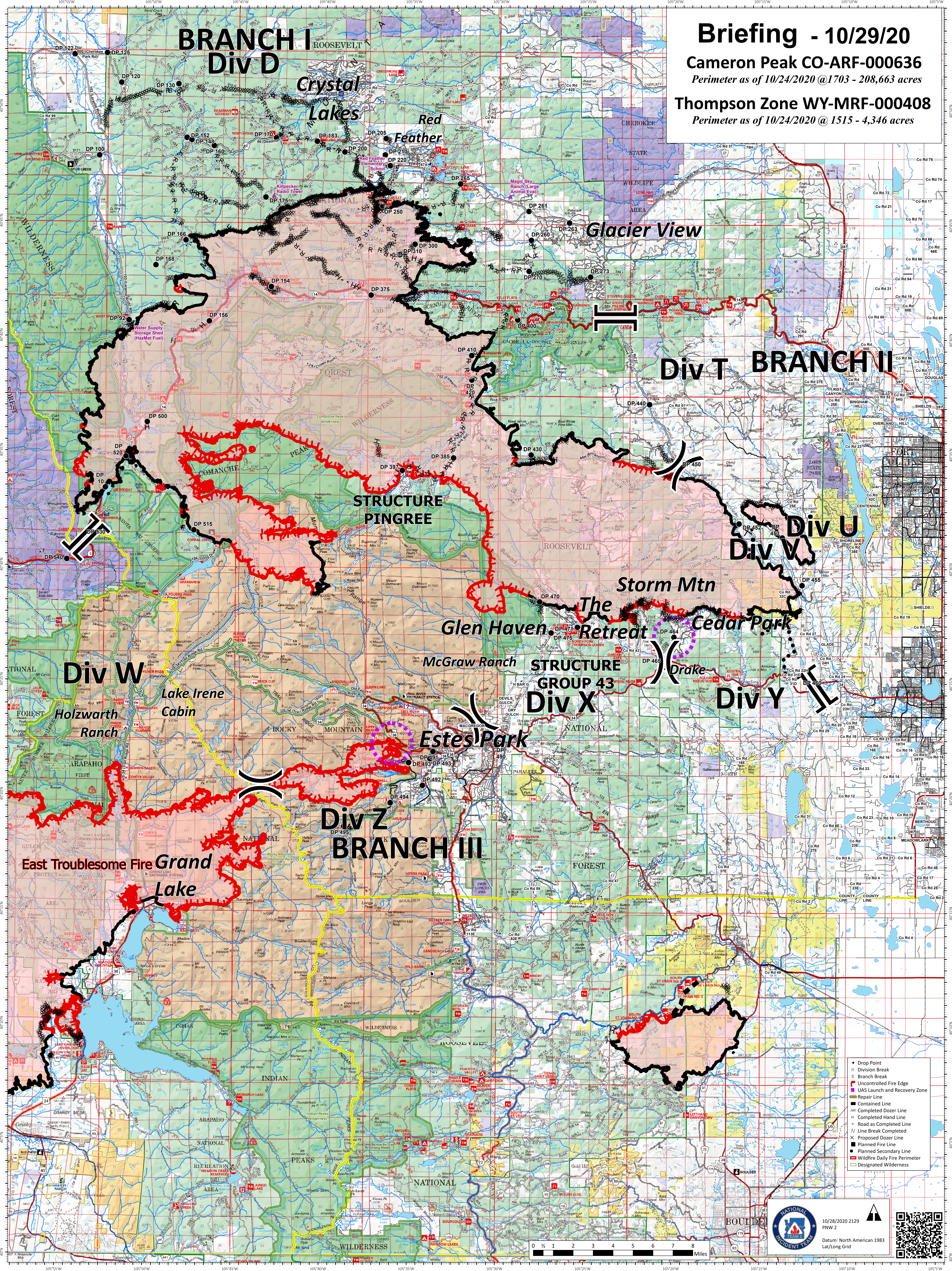


# BRANCH I Div D

## Briefing - 10/29/20

Cameron Peak CO-ARF-000636  
Perimeter as of 10/24/2020 @1703 - 208,663 acres

Thompson Zone WY-MRF-000408  
Perimeter as of 10/24/2020 @ 1515 - 4,346 acres

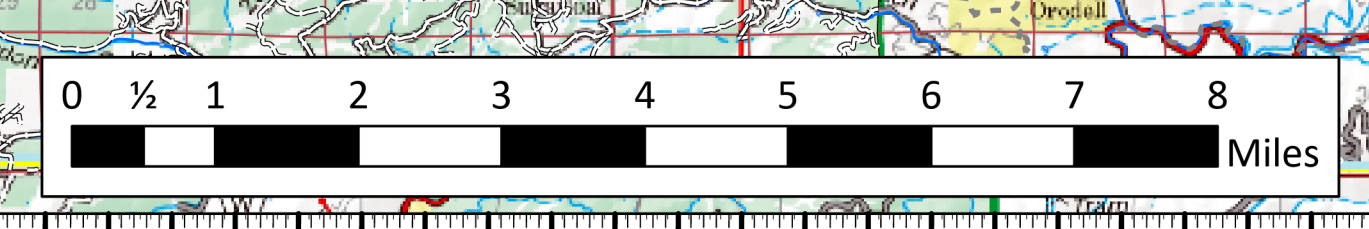


STRUCTURE  
PINGREE

STRUCTURE  
GROUP 43  
Div X

Div Z  
BRANCH III

- Drop Point
- X Division Break
- || Branch Break
- Uncontrolled Fire Edge
- UAS Launch and Recovery Zone
- Repair Line
- Contained Line
- Completed Dozer Line
- Completed Hand Line
- Road as Completed Line
- Line Break Completed
- Proposed Dozer Line
- Planned Fire Line
- Planned Secondary Line
- Wildfire Daily Fire Perimeter
- Designated Wilderness



10/28/2020 2129  
PNW 2  
Datum: North American 1983  
Lat/Long Grid