

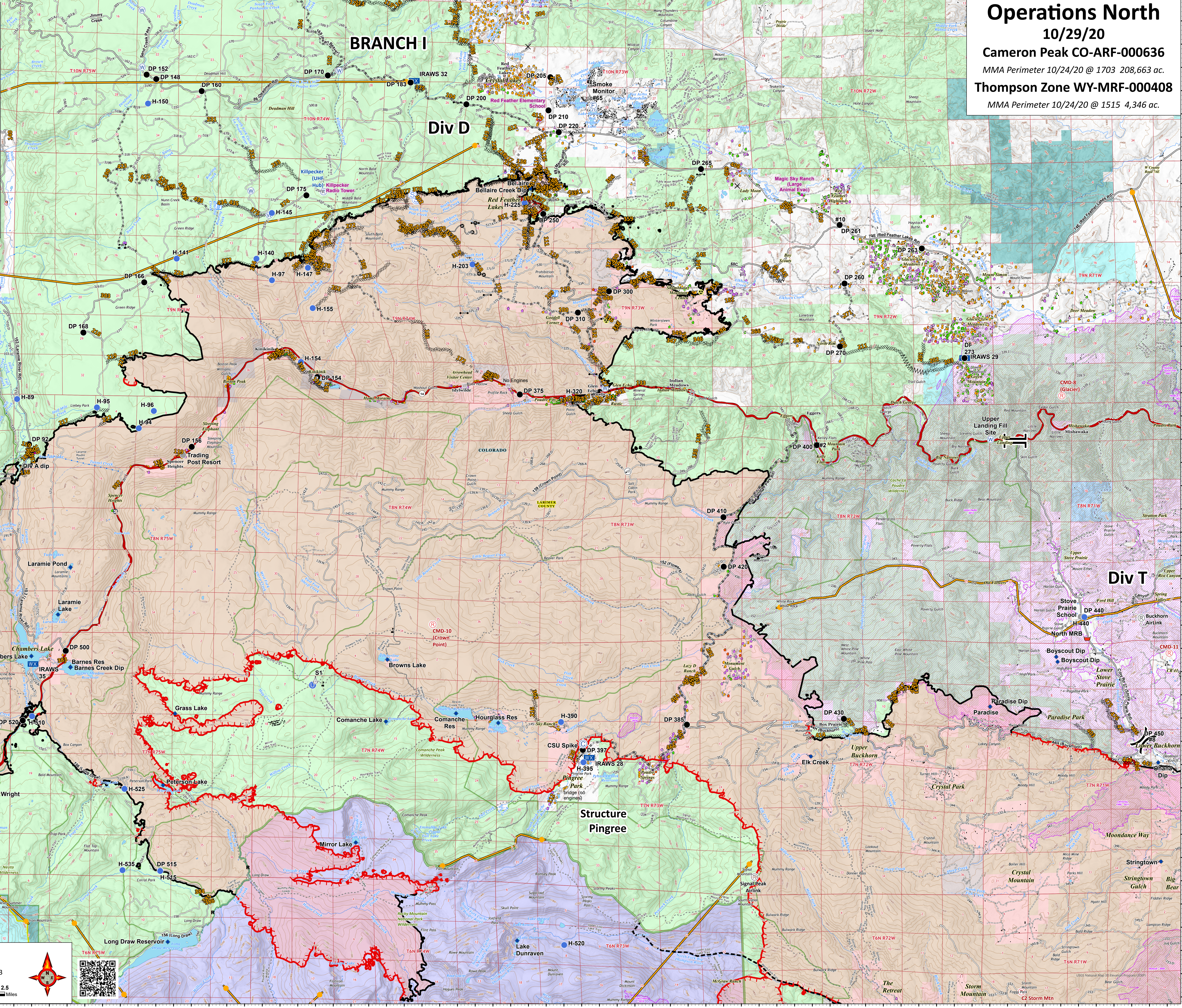
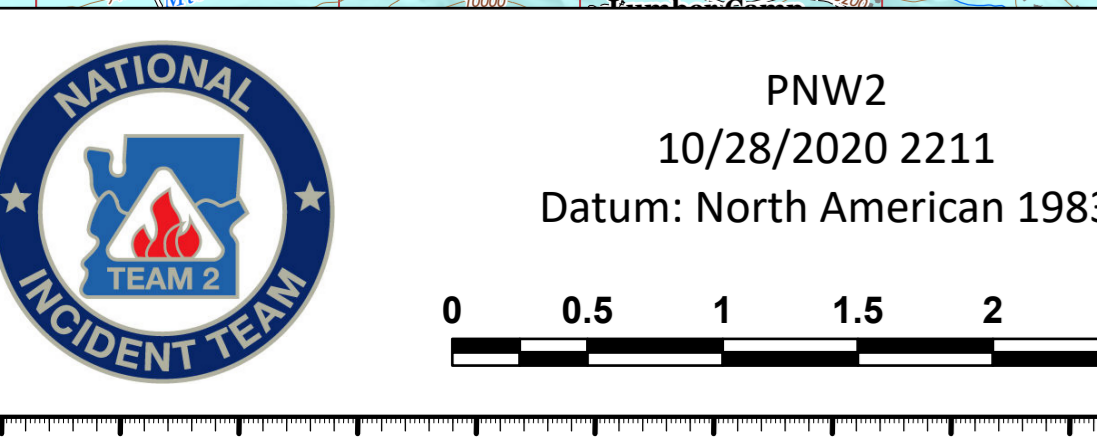
Operations North

10/29/20
 Cameron Peak CO-ARF-000636
 MMA Perimeter 10/24/20 @ 1703 208,663 ac.
 Thompson Zone WY-MRF-000408
 MMA Perimeter 10/24/20 @ 1515 4,346 ac.

- AirLink Repeater
- UHF Repeater
- Repeater
- Bridge
- Camp
- Closure
- Dip Site
- Drop Point
- Fire Station
- Gate
- Hazard
- Unimproved Landing Area
- Helispot
- Internet Access
- Mobile Weather Unit
- Repeater
- Resource Location
- Retardant/Mud Pit
- Sling Site
- Staging Area
- Stream Crossing
- Water Source
- Restricted Water Source
- Water Development or Draft Site
- Value at Risk
- Other
- Division Break
- Branch Break
- Contained Line
- Completed Dozer Line
- Completed Hand Line
- Road as Completed Line
- Uncontrolled Fire Edge
- Access or Improved Road
- Line Break Completed
- Fire Break Planned or Incomplete
- Zone Break
- Wildfire Daily Fire Perimeter
- Fire History
- Primary Line
- Last Chance Line
- Cameron Peak MAPS 10/26
- Active

- Structure Triage - Stand Alone
- Structure Triage - Defensible - Prep and Hold
- Structure Triage - Non-Defensible - Prep and Leave
- Structure Triage - Non-Defensible - Rescue Drive-By
- Structure Triage - Unknown

PNW2
 10/28/2020 2211
 Datum: North American 1983



USGS National Map Accuracy Standards
 1:50,000 Scale
 10/28/2020 2211
 Datum: North American 1983