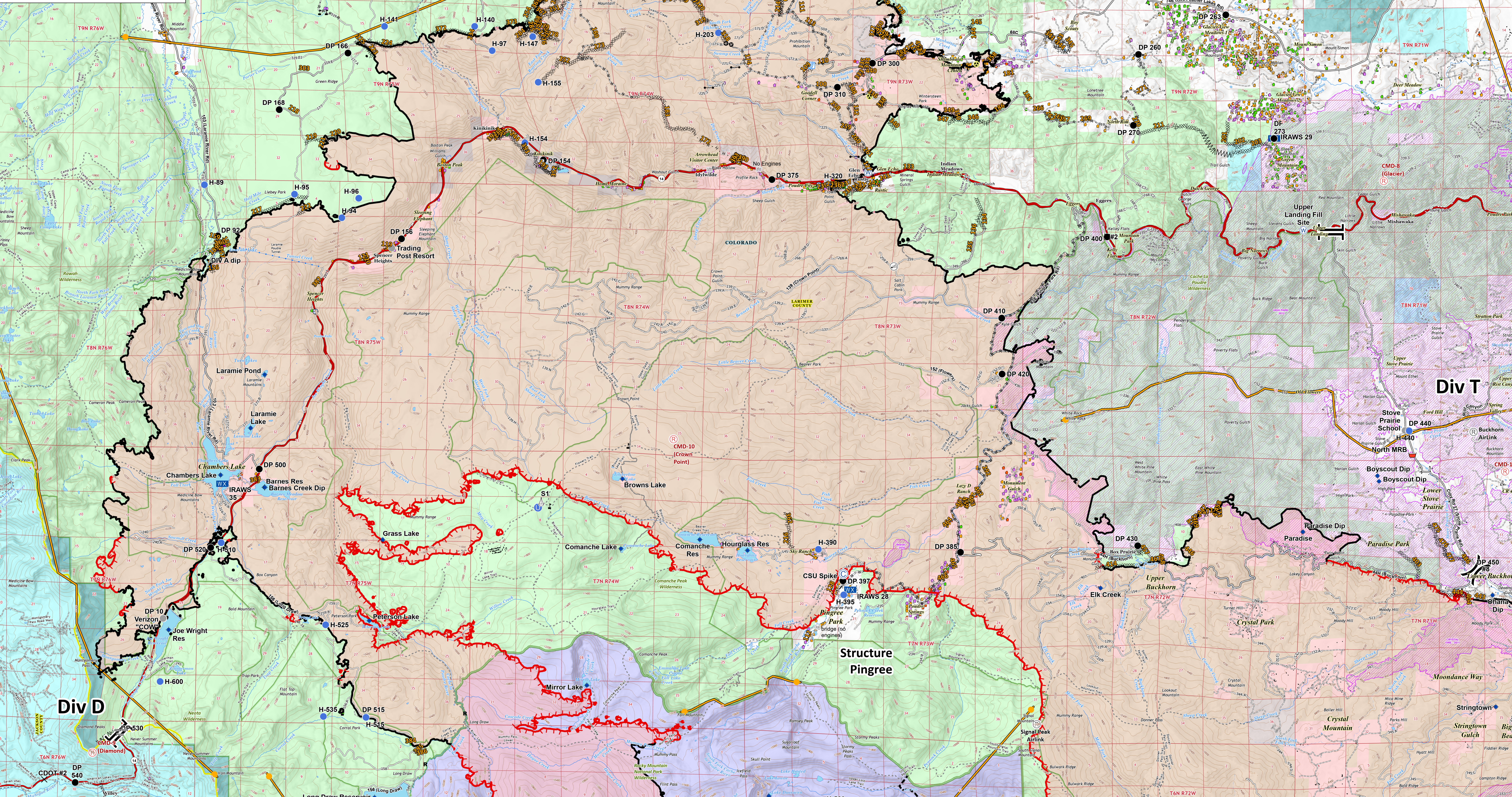


# Operations North

10/29/20  
 Cameron Peak CO-ARF-000636  
 MMA Perimeter 10/24/20 @ 1703 208,663 ac.  
 Thompson Zone WY-MRF-000408  
 MMA Perimeter 10/24/20 @ 1515 4,346 ac.

- AirLink Repeater
- UHF Repeater
- Repeater
- Bridge
- Camp
- Closure
- Dip Site
- Drop Point
- Fire Station
- Gate
- Hazard
- Unimproved Landing Area
- Helispot
- Internet Access
- Mobile Weather Unit
- Repeater
- Resource Location
- Retardant/Mud Pit
- Sling Site
- Staging Area
- Stream Crossing
- Water Source
- Restricted Water Source
- Water Development or Draft Site
- Value at Risk
- Other
- Division Break
- Branch Line
- Contained Line
- Completed Dozer Line
- Completed Hand Line
- Road as Completed Line
- Uncontrolled Fire Edge
- Access or Improved Road
- Line Break Completed
- Fire Break Planned or Incomplete
- Zone Break
- Wildfire Daily Fire Perimeter
- Fire History
- Primary Line
- Last Chance Line
- Cameron Peak MAPS 10/26
- Active
- Structure Triage
- Defensible - Stand Alone
- Defensible - Prep and Hold
- Non-Defensible - Prep and Leave
- Non-Defensible - Rescue Drive-By
- Unknown



PNW2  
 10/28/2020 2229  
 Datum: North American 1983



USGS National Map 10:100000 Series (2010)