

Thompson Zone

10/29/20

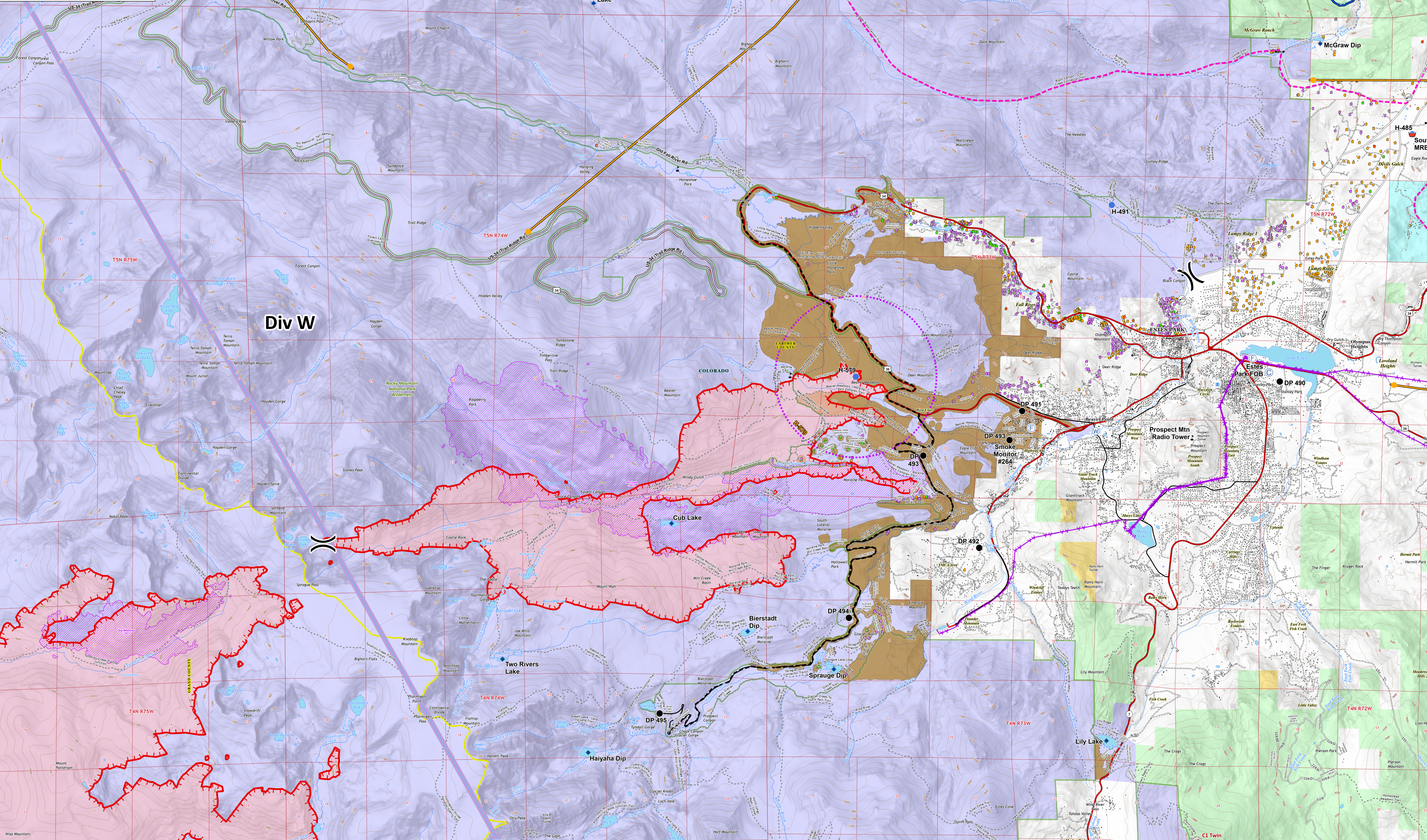
Cameron Peak CO-ARF-000636


MMA Perimeter 10/24/20 @ 1703 208,663 ac.

Thompson Zone WY-MRF-000408



MMA Perimeter 10/24/20 @ 1515 4,346 ac.

- Repeater
- Camp
- Dip Site
- Drop Point
- Fire Station
- Gate
- Helispot
- Internet Access
- Repeater
- Retardant/Mud Pit
- Water Source
- Value at Risk
- Other
- Division Break
- Uncontrolled Fire Edge
- Temporary Flight Restriction
- UAS Launch and Recovery Zone
- WAPA Transmission Lines
- Wildfire Daily Fire Perimeter
- Fuels Treatments
- Primary Line
- Last Chance Line
- Cameron Peak MAPS 10/26
 - Active
 - Pending
- Structure Triage
 - Defensible - Stand Alone
 - Defensible - Prep and Hold
 - Non-Defensible - Prep and Leave
 - Non-Defensible - Rescue Drive-By
 - Unknown



 PNW2
10/28/2020 2303
Datum: North American 1983

0.5 1 1.5 2



USGS National Map Information Program (NMIP)
County Road 59