

Operations East

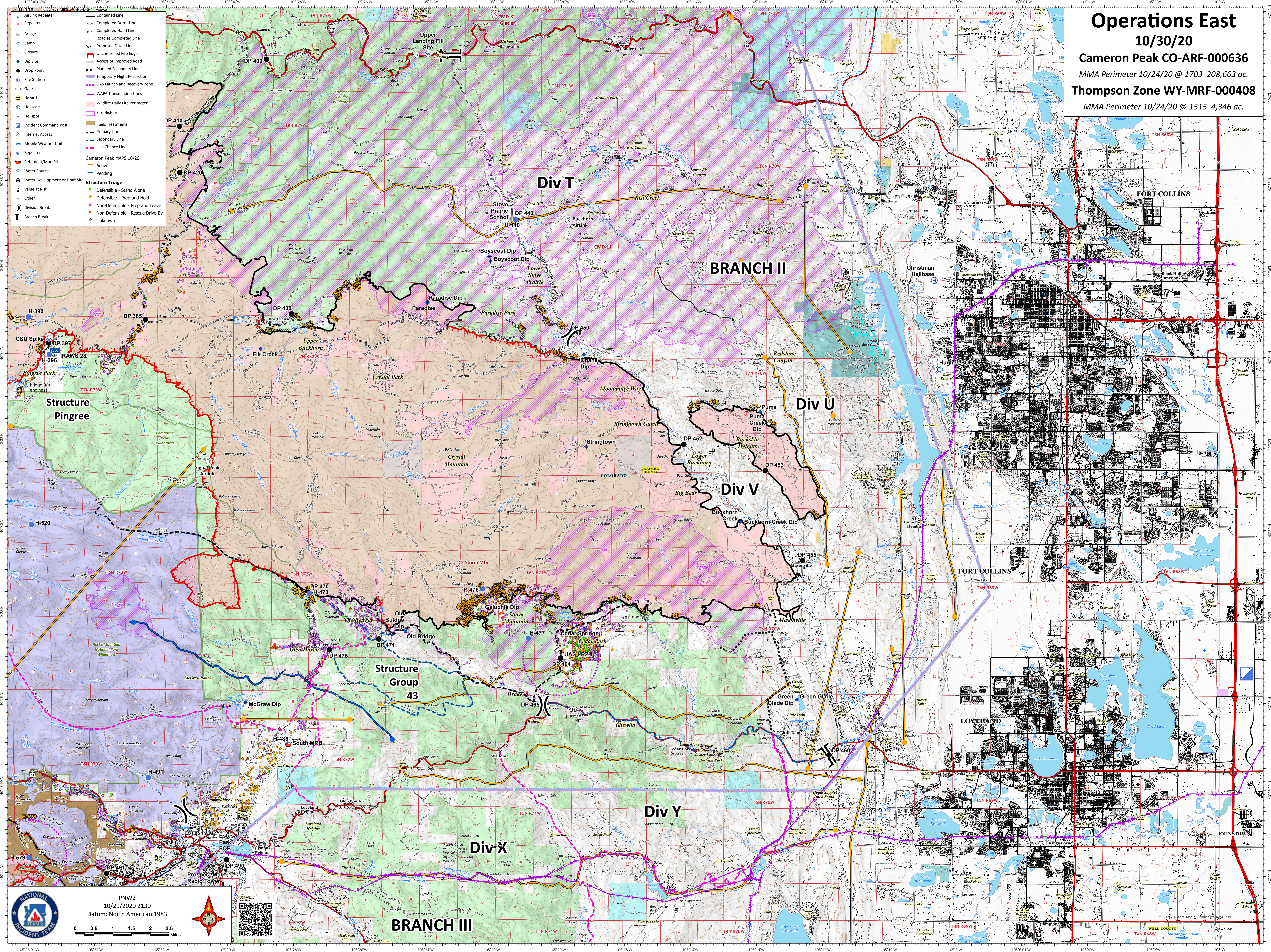
10/30/20

Cameron Peak CO-ARF-000636

MMA Perimeter 10/24/20 @ 1703 208,663 ac.

Thompson Zone WY-MRF-000408

MMA Perimeter 10/24/20 @ 1515 4,346 ac.



- AirLink Repeater
- Repeater
- Bridge
- Camp
- Closure
- Dip Site
- Drop Point
- Fire Station
- Hazard
- Helibase
- Helispot
- Incident Command Post
- Internet Access
- Mobile Weather Unit
- Repeater
- Retardant/Mud Pit
- Water Source
- Water Development or Draft Site
- Structure Triage
 - Value at Risk
 - Other
 - Division Break
 - Branch Break
- Contained Line
- Completed Dozer Line
- Road as Completed Line
- Proposed Dozer Line
- Uncontrolled Fire Edge
- Access or Improved Road
- Planned Secondary Line
- Temporary Flight Restriction
- UAS Launch and Recovery Zone
- WAPA Transmission Lines
- Wildfire Daily Fire Perimeter
- Fire History
- Fuels Treatments
 - Primary Line
 - Secondary Line
 - Last Chance Line
- Cameron Peak MAPS 10/26
 - Active
 - Pending

NATIONAL INCIDENT TEAM
PNW2
10/29/2020 2130
Datum: North American 1983

0 0.5 1 1.5 2 2.5 Miles

WELD COUNTY
Stout Fire District
Number 6