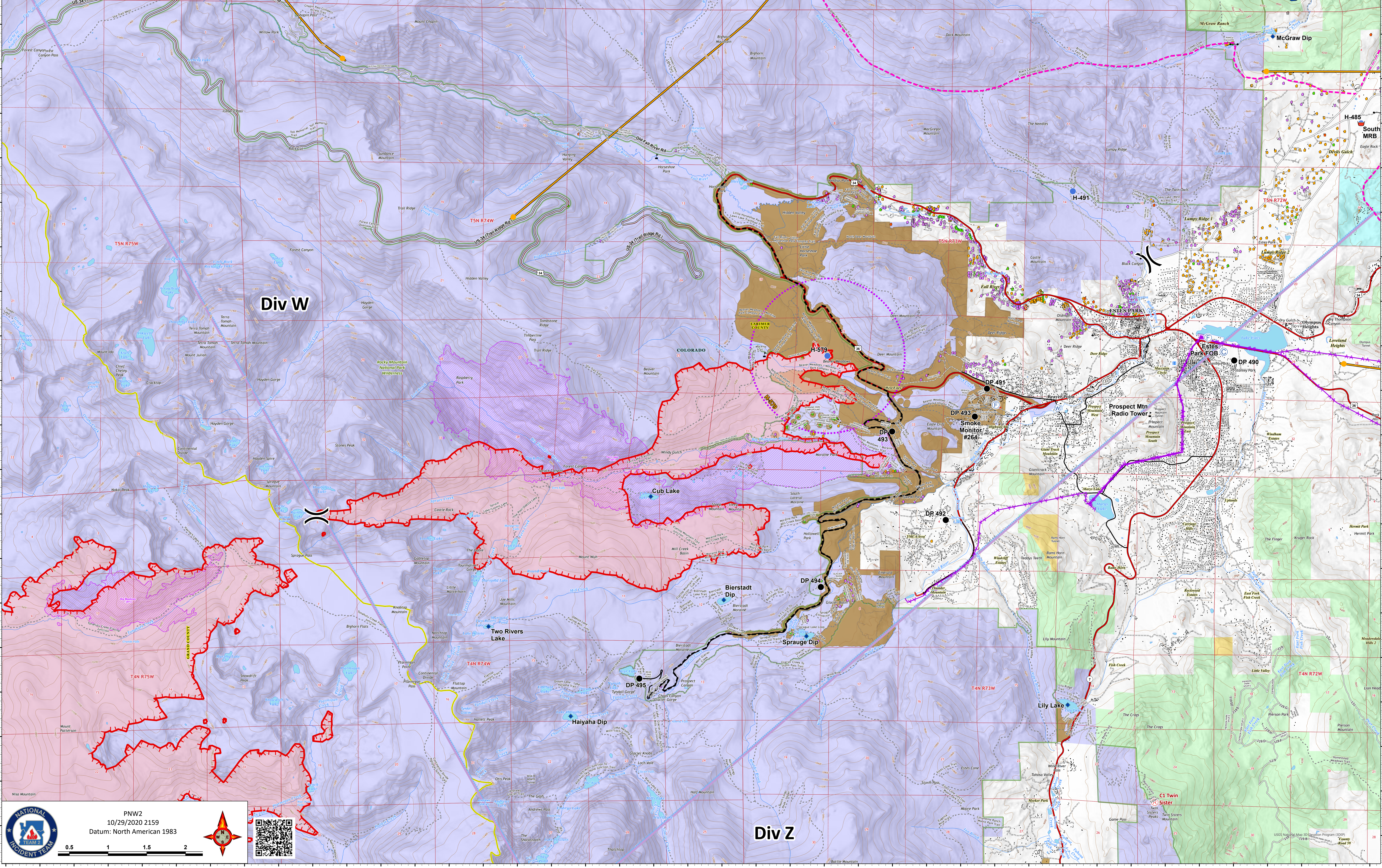


Thompson Zone

10/30/20
 Cameron Peak CO-ARF-000636
 MMA Perimeter 10/24/20 @ 1703 208,663 ac.
 Thompson Zone WY-MRF-000408
 MMA Perimeter 10/24/20 @ 1515 4,346 ac.

- Repeater
 - Camp
 - Dip Site
 - Drop Point
 - Fire Station
 - Gate
 - Helispot
 - Internet Access
 - Repeater
 - Retardant/Mud Pit
 - Water Source
 - Value at Risk
 - Other
 - ⌘ Division Break
 - Uncontrolled Fire Edge
 - Temporary Flight Restriction
 - UAS Launch and Recovery Zone
 - WAPA Transmission Lines
 - Wildfire Daily Fire Perimeter
 - Fuels Treatments
 - Primary Line
 - Last Chance Line
- Cameron Peak MAPS 10/26
- Active
 - Pending
- Structure Triage
- Defensible - Stand Alone
 - Defensible - Prep and Hold
 - Non-Defensible - Prep and Leave
 - Non-Defensible - Rescue Drive-By
 - Unknown



NATIONAL INCIDENT TEAM

PNW2
 10/29/2020 2159
 Datum: North American 1983

0.5 1 1.5 2

USGS National Map Information Program (NIP)
 2018
 County Road 59