

Operations North

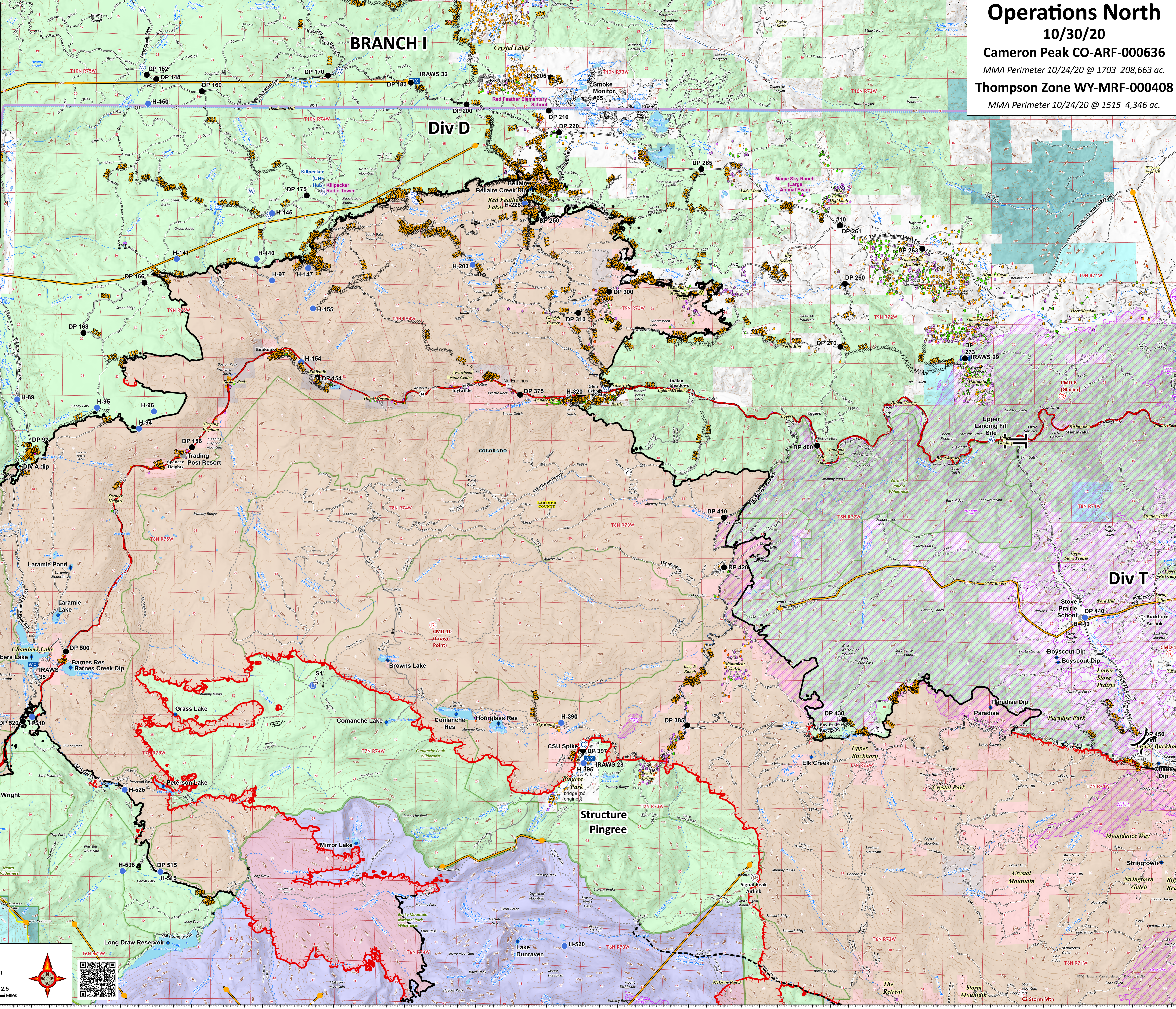
10/30/20
 Cameron Peak CO-ARF-000636
 MMA Perimeter 10/24/20 @ 1703 208,663 ac.
 Thompson Zone WY-MRF-000408
 MMA Perimeter 10/24/20 @ 1515 4,346 ac.

- AirLink Repeater
- UHF Repeater
- Repeater
- Bridge
- Camp
- Closure
- Dip Site
- Drop Point
- Fire Station
- Gate
- Hazard
- Unimproved Landing Area
- Helispot
- Internet Access
- Mobile Weather Unit
- Repeater
- Resource Location
- Sling Site
- Staging Area
- Stream Crossing
- Water Source
- Restricted Water Source
- Water Development or Draft Site
- Value at Risk
- Other
- Division Break
- Branch Break
- Contained Line
- Completed Dozer Line
- Closure
- Road as Completed Line
- Uncontrolled Fire Edge
- Access or Improved Road
- Line Break Completed
- Fire Break Planned or Incomplete
- Temporary Flight Restriction
- Zone Break
- Wildfire Daily Fire Perimeter
- Fire History
- Primary Line
- Last Chance Line

- Cameron Peak MAPS 10/26**
- Active
- Structure Triage**
- Defensible - Stand Alone
- Defensible - Prep and Hold
- Non-Defensible - Prep and Leave
- Non-Defensible - Rescue Drive-By
- Unknown

PNW2
 10/29/2020 2143
 Datum: North American 1983

BRANCH I
 Div D
 Div T
 Structure Pingree



105°56'W 105°54'W 105°52'W 105°50'W 105°48'W 105°46'W 105°44'W 105°42'W 105°40'W 105°38'W 105°36'01'W 105°34'W 105°32'W 105°30'W 105°28'W 105°26'W 105°24'W 105°22'W 105°20'W

40°28'N 40°26'N 40°24'N 40°22'N 40°20'N 40°18'N 40°16'N 40°14'N 40°12'N 40°10'N 40°8'N 40°6'N 40°4'N 40°2'N