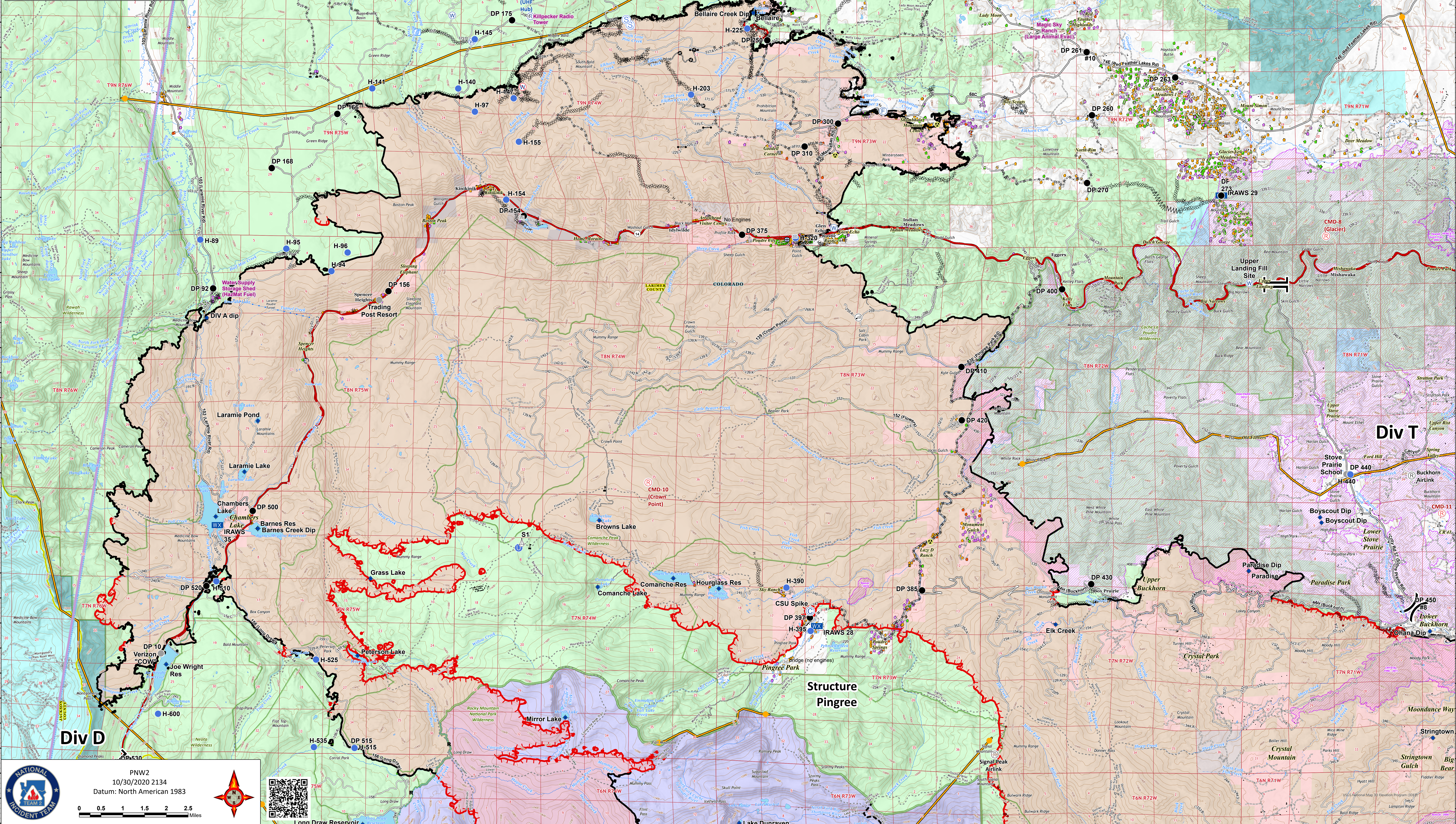


# Operations North

10/31/20  
 Cameron Peak CO-ARF-000636  
 MMA Perimeter 10/24/20 @ 1703 208,663 ac.  
 Thompson Zone WY-MRF-000408  
 MMA Perimeter 10/24/20 @ 1515 4,346 ac.

- AirLink Repeater
- UHF Repeater
- Repeater
- Bridge
- Camp
- ✕ Closure
- Dip Site
- Drop Point
- Fire Station
- Gate
- ⚠ Hazard
- Unimproved Landing Area
- Helispot
- Internet Access
- Mobile Weather Unit
- Repeater
- Resource Location
- ▲ Safety Zone
- ▲ Sling Site
- Staging Area
- Stream Crossing
- Water Source
- Restricted Water Source
- Water Development or Draft Site
- Value at Risk
- Other
- ✕ Division Break
- ✕ Branch Break
- Contained Line
- Completed Dozer Line
- Completed Hand Line
- Road as Completed Line
- Uncountrolled Fire Edge
- Access or Improved Road
- Line Break Completed
- Fire Break Planned or Incomplete
- Temporary Flight Restriction
- Zone Break
- Wildfire Daily Fire Perimeter
- Fire History
- Primary Line
- Active
- Structure Triage
  - Defensible - Stand Alone
  - Defensible - Prep and Hold
  - Non-Defensible - Prep and Leave
  - Non-Defensible - Rescue Drive-By
  - Unknown



**NATIONAL INCIDENT TEAM**

PWW2  
 10/30/2020 2134  
 Datum: North American 1983

0 0.5 1 1.5 2 2.5 Miles

Long Draw Reservoir

Div T

BRANCH I

Div D

Structure Pingree

COLORADO

Div D