

# Operations East

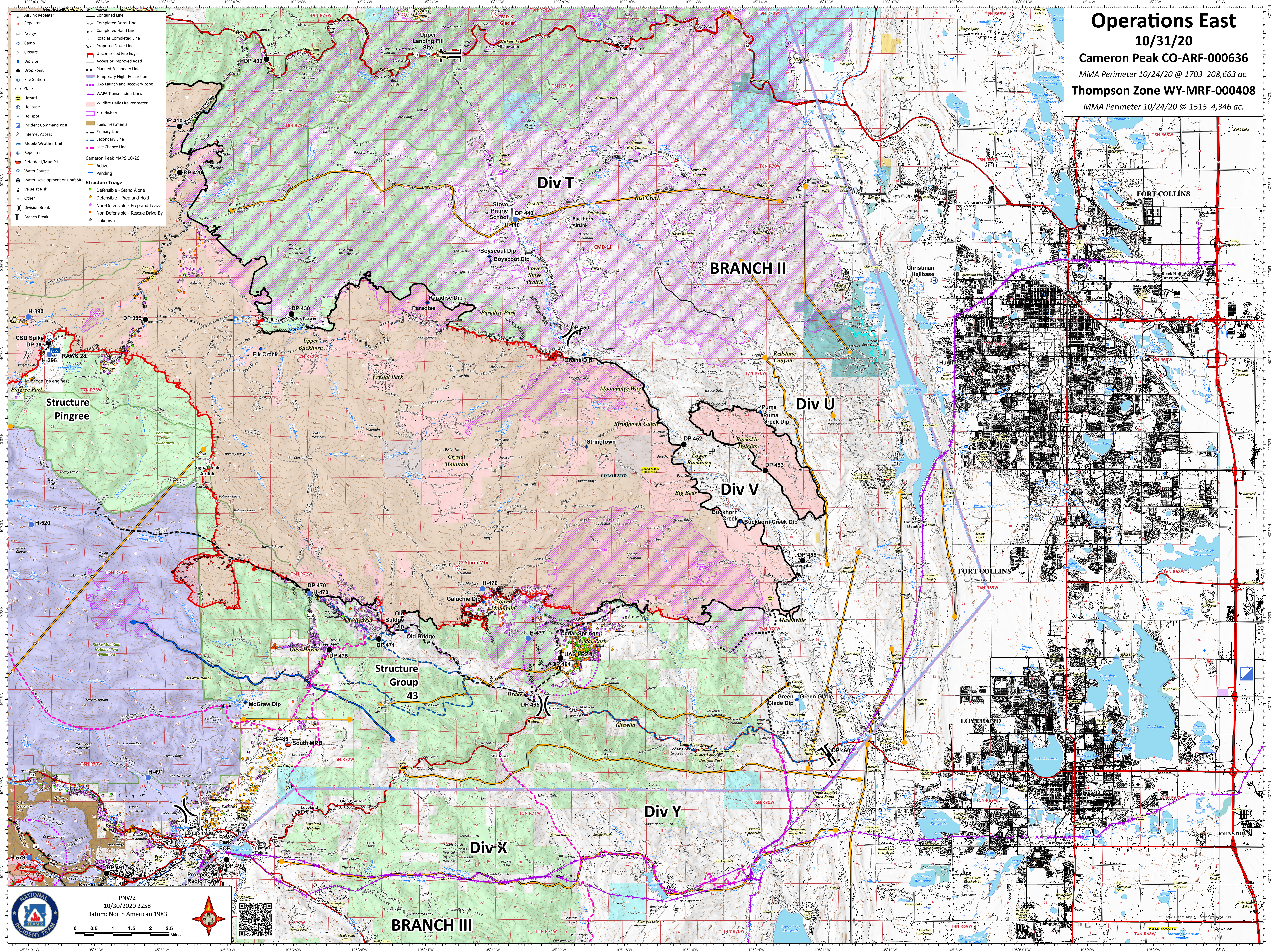
10/31/20

Cameron Peak CO-ARF-000636

MMA Perimeter 10/24/20 @ 1703 208,663 ac.

Thompson Zone WY-MRF-000408

MMA Perimeter 10/24/20 @ 1515 4,346 ac.



- AirLink Repeater
  - Repeater
  - Bridge
  - Camp
  - Dip Site
  - Drop Point
  - Fire Station
  - Gate
  - Hazard
  - Helibase
  - Incident Command Post
  - Internet Access
  - Mobile Weather Unit
  - Repeater
  - Retardant/Mud Pit
  - Water Source
  - Water Development or Draft Site
  - Structure Triage
    - Value at Risk
    - Other
  - Division Break
  - Branch Break
- Cameron Peak MAPS 10/26
- Active
  - Pending
- Structure Triage
- Defensible - Stand Alone
  - Defensible - Prep and Hold
  - Non-Defensible - Prep and Leave
  - Non-Defensible - Rescue Drive-By
  - Unknown

NATIONAL INCIDENT TEAM

PNW2  
10/30/2020 2258  
Datum: North American 1983

0 0.5 1 1.5 2 2.5 Miles

WELD COUNTY