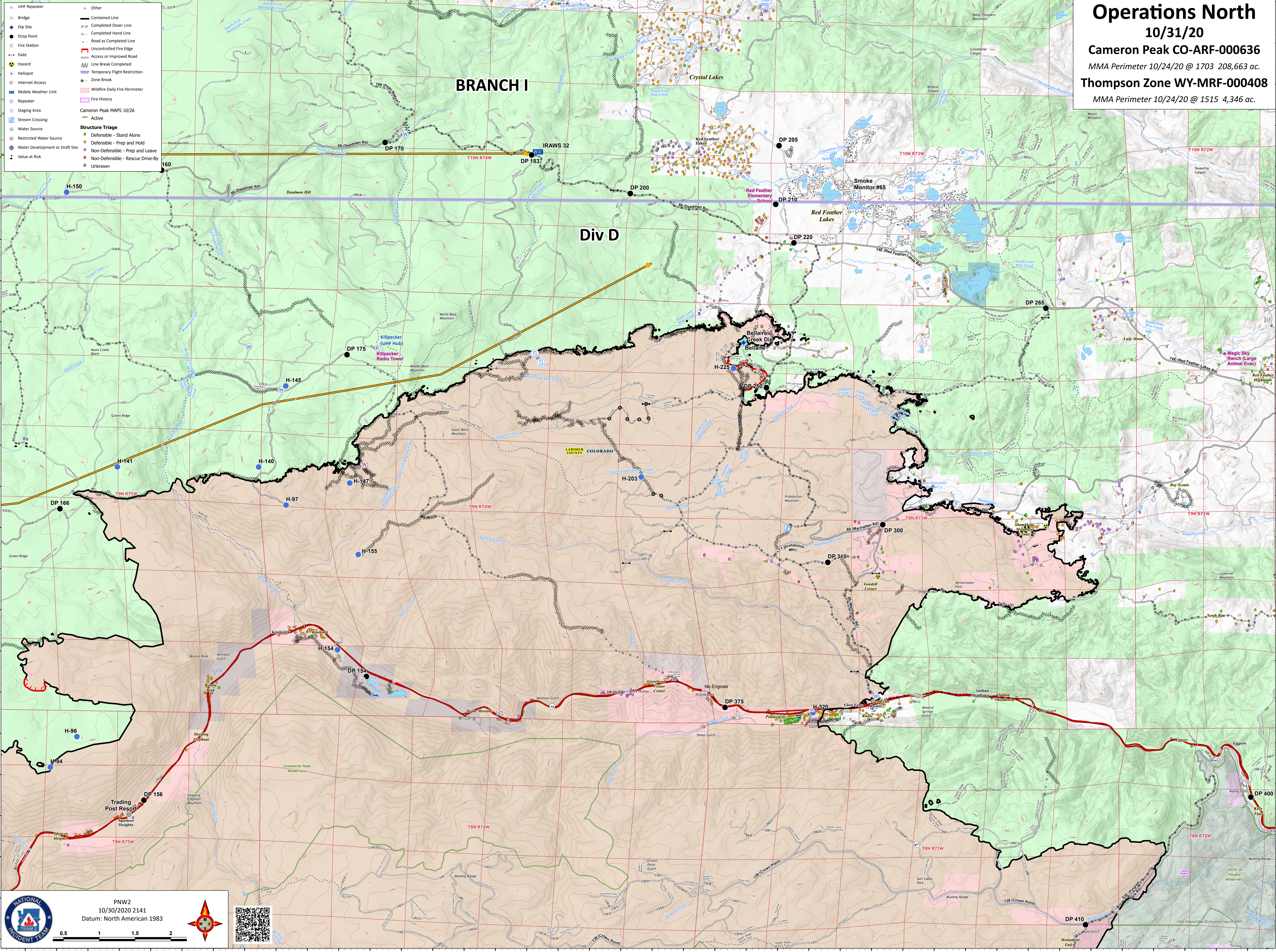


Operations North

10/31/20
 Cameron Peak CO-ARF-000636
 MMA Perimeter 10/24/20 @ 1703 208,663 ac.
 Thompson Zone WY-MRF-000408
 MMA Perimeter 10/24/20 @ 1515 4,346 ac.

- UHF Repeater
- Bridge
- Dip Site
- Drop Point
- Fire Station
- Gate
- Hazard
- Hellspot
- Internet Access
- Repeater
- Staging Area
- Stream Crossing
- Water Source
- Restricted Water Source
- Water Development or Draft Site
- Value at Risk
- Other
- Contained Line
- Completed Dozer Line
- Completed Hand Line
- Road as Completed Line
- Uncontrolled Fire Edge
- Access or Improved Road
- Line Break Completed
- Temporary Flight Restriction
- Zone Break
- Wildfire Daily Fire Perimeter
- Fire History
- Cameron Peak MAPS 10/26
- Active
- Structure Triage
- Defensible - Stand Alone
- Defensible - Strip and Hold
- Non-Defensible - Prep and Leave
- Non-Defensible - Rescue Drive-By
- Unknown



NATIONAL INCIDENT TEAM

PNW2
 10/30/2020 2141
 Datum: North American 1983

USGS National Map 3D Elevation Program (NED)