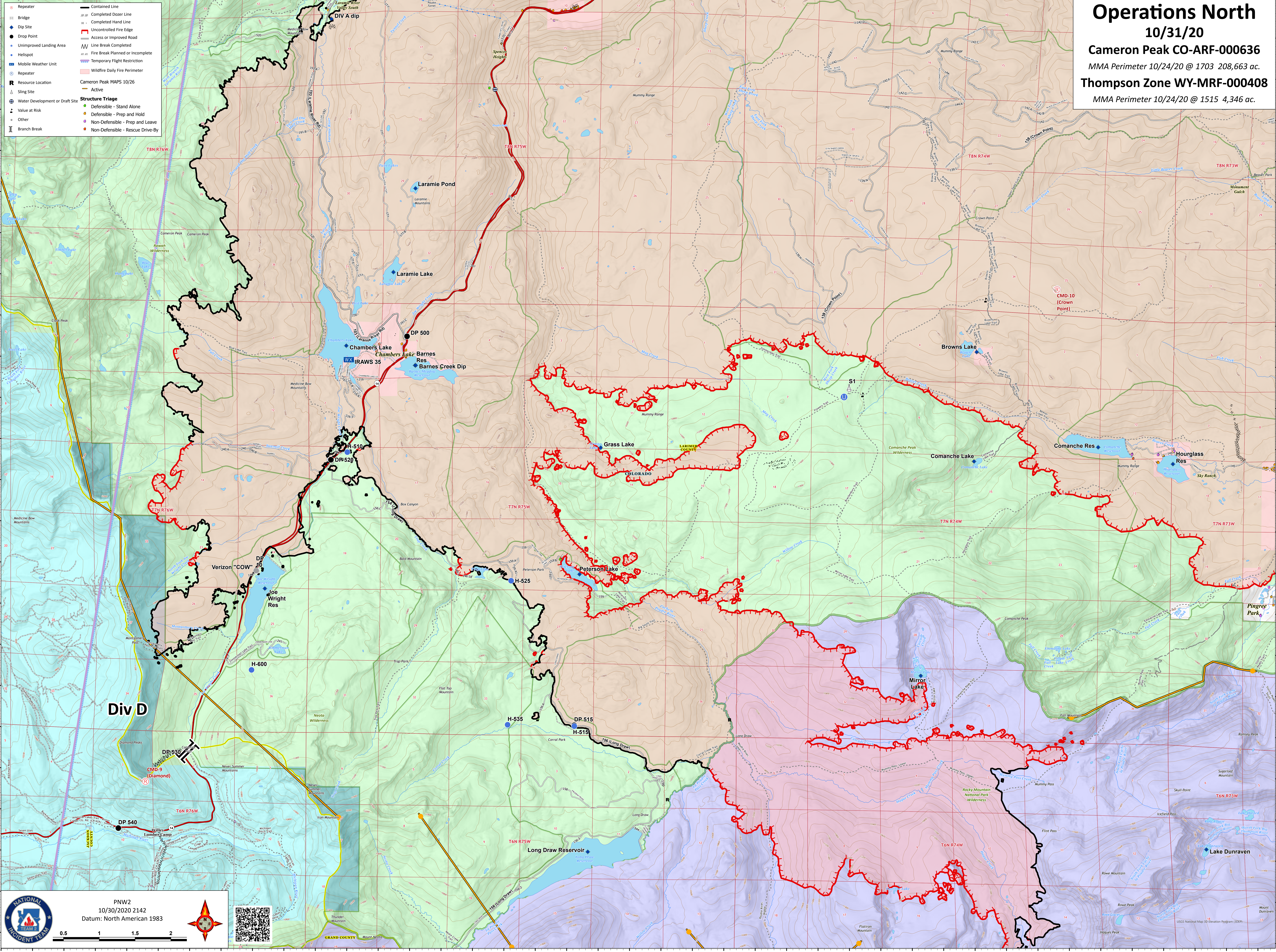



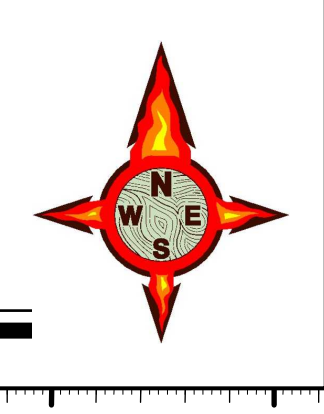

Operations North

10/31/20
 Cameron Peak CO-ARF-000636
 MMA Perimeter 10/24/20 @ 1703 208,663 ac.
 Thompson Zone WY-MRF-000408
 MMA Perimeter 10/24/20 @ 1515 4,346 ac.

- Repeater
- Bridge
- Dip Site
- Drop Point
- Unimproved Landing Area
- Helispot
- Mobile Weather Unit
- Repeater
- Resource Location
- Sling Site
- Water Development or Draft Site
- Value at Risk
- Other
- Branch Break
- Contained Line
- Completed Dozer Line
- Completed Hand Line
- Uncontrolled Fire Edge
- Access or Improved Road
- Line Break Completed
- Fire Break Planned or Incomplete
- Temporary Flight Restriction
- Wildfire Daily Fire Perimeter
- Cameron Peak MAPS 10/26
- Active
- Structure Triage
- Defensible - Stand Alone
- Defensible - Prep and Hold
- Non-Defensible - Prep and Leave
- Non-Defensible - Rescue Drive-By



PNW2
 10/30/2020 2142
 Datum: North American 1983

0.5 1 1.5 2

USGS National Map 3D Elevation Program (DEM)