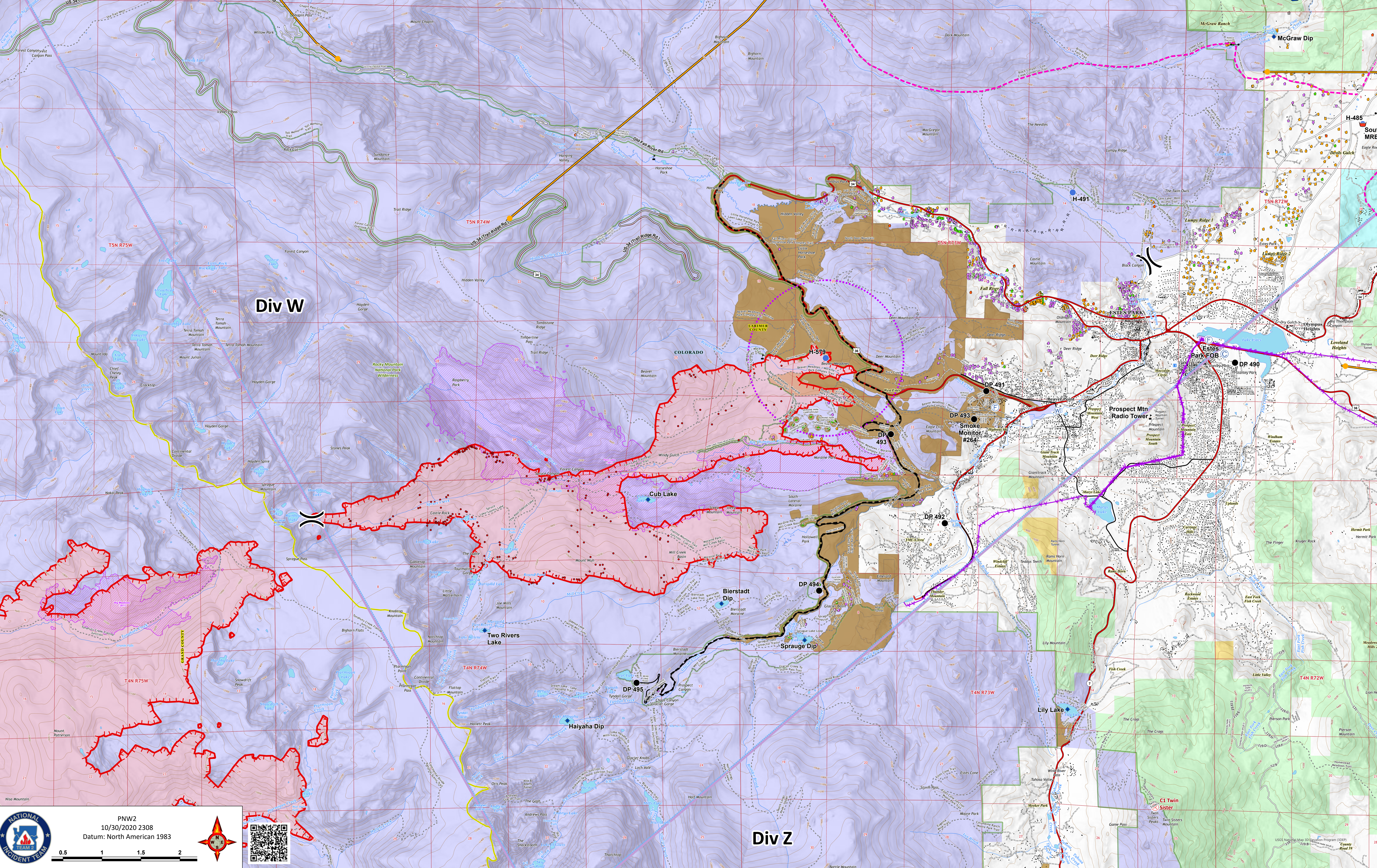


# Thompson Zone

10/31/20  
 Cameron Peak CO-ARF-000636  
 MMA Perimeter 10/24/20 @ 1703 208,663 ac.  
 Thompson Zone WY-MRF-000408  
 MMA Perimeter 10/24/20 @ 1515 4,346 ac.

- Repeater
- Camp
- Dip Site
- Drop Point
- Fire Station
- Gate
- Hellspot
- Internet Access
- Repeater
- Retardant/Mud Pit
- Water Source
- Value at Risk
- Other
- Division Break
- Road as Completed Line
- Uncontrolled Fire Edge
- Temporary Flight Restriction
- UAS Launch and Recovery Zone
- WAPA Transmission Lines
- Wildfire Daily Fire Perimeter
- Fuels Treatments
- Primary Line
- Last Chance Line
- Cameron Peak MAPS 10/26
- Active
- Pending
- Structure Triage
- Defensible - Stand Alone
- Defensible - Prep and Hold
- Non-Defensible - Prep and Leave
- Non-Defensible - Rescue Drive-By
- Unknown



**NATIONAL INCIDENT TEAM**

PNW2  
 10/30/2020 2308  
 Datum: North American 1983

0.5 1 1.5 2

USGS National Map Information Program (NIP)  
 2018  
 County Road 59