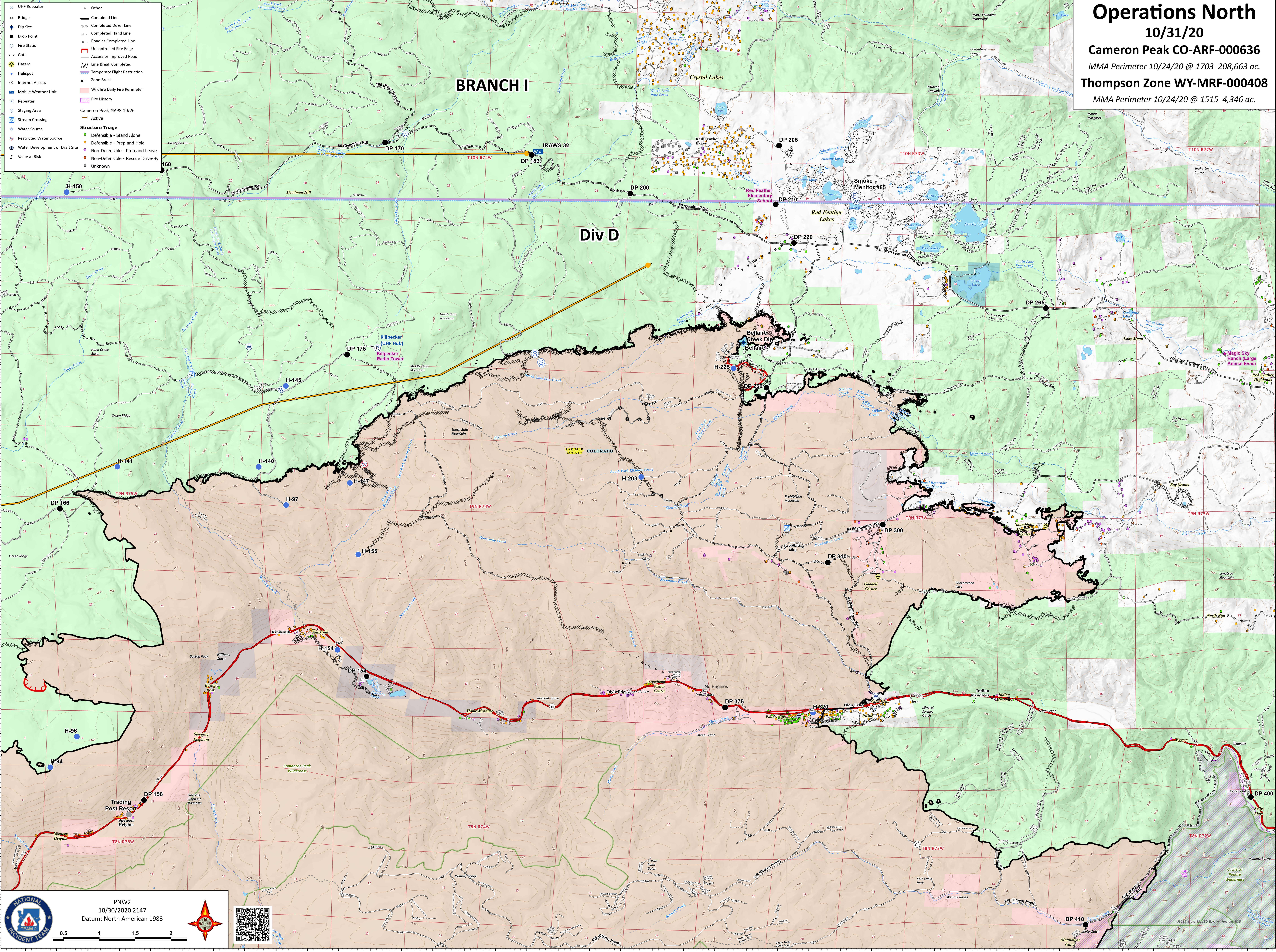


# Operations North

10/31/20  
 Cameron Peak CO-ARF-000636  
 MMA Perimeter 10/24/20 @ 1703 208,663 ac.  
 Thompson Zone WY-MRF-000408  
 MMA Perimeter 10/24/20 @ 1515 4,346 ac.

- UHF Repeater
- Bridge
- Dip Site
- Drop Point
- Fire Station
- Gate
- Hazard
- Heliport
- Internet Access
- Mobile Weather Unit
- Repeater
- Staging Area
- Stream Crossing
- Water Source
- Restricted Water Source
- Water Development or Draft Site
- Value at Risk
- Other
- Contained Line
- Completed Dozer Line
- Completed Hand Line
- Road as Completed Line
- Uncontrolled Fire Edge
- Access or Improved Road
- Line Break Completed
- Temporary Flight Restriction
- Zone Break
- Wildfire Daily Fire Perimeter
- Fire History
- Cameron Peak MAPS 10/26
- Active
- Structure Triage
- Defensible - Stand Alone
- Defensible - Prep and Hold
- Non-Defensible - Prep and Leave
- Non-Defensible - Rescue Drive-By
- Unknown



**NATIONAL INCIDENT TEAM**

PNW2  
 10/30/2020 2147  
 Datum: North American 1983

0.5 1 1.5 2

©2020 National Map Accuracy Program (NMAP)