

Operations North

10/31/20

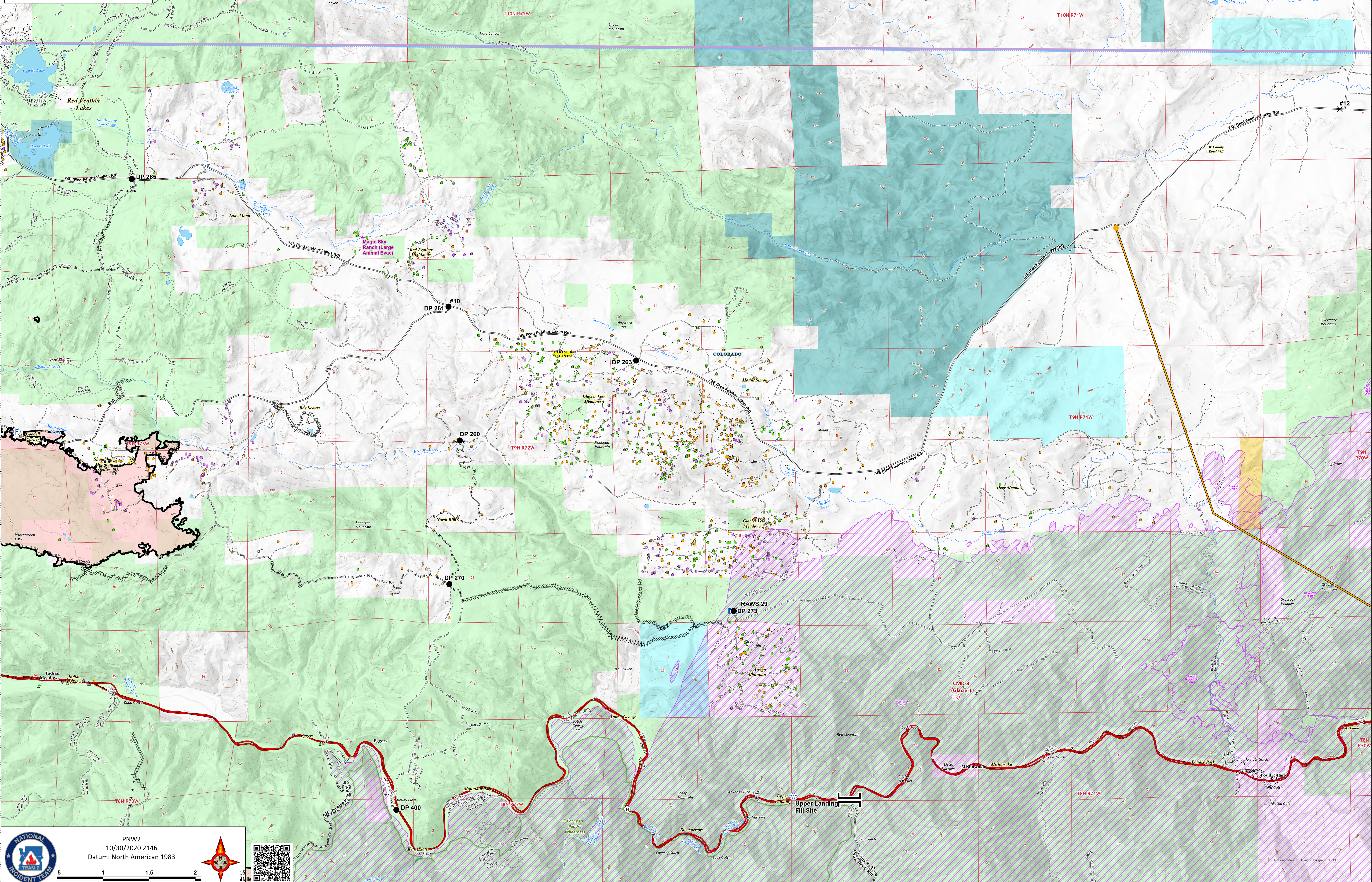
Cameron Peak CO-ARF-000636

MMA Perimeter 10/24/20 @ 1703 208,663 ac.

Thompson Zone WY-MRF-000408

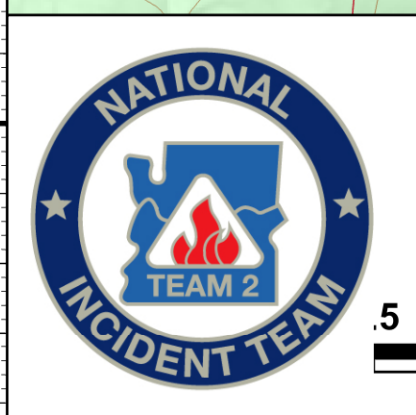
MMA Perimeter 10/24/20 @ 1515 4,346 ac.

● Repeater	— Road as Completed Line
✕ Closure	— Access or Improved Road
● Drop Point	— Line Break Completed
● Fire Station	— Temporary Flight Restriction
— Gate	— Wildfire Daily Fire Perimeter
● Hazard	— Fire History
— Mobile Weather Unit	— Cameron Peak MAPS 10/26
● Repeater	— Active
● Water Source	— Structure Triage
— Branch Break	● Defensible - Stand Alone
— Contained Line	● Defensible - Prep and Hold
— Completed Dozer Line	● Non-Defensible - Prep and Leave
— Completed Hand Line	● Non-Defensible - Rescue Drive-By
	● Unknown



PNW2
10/30/2020 2146
Datum: North American 1983

Scale: 1 inch = 1.5 miles



© 2020 National Map Information Program (NMIP)