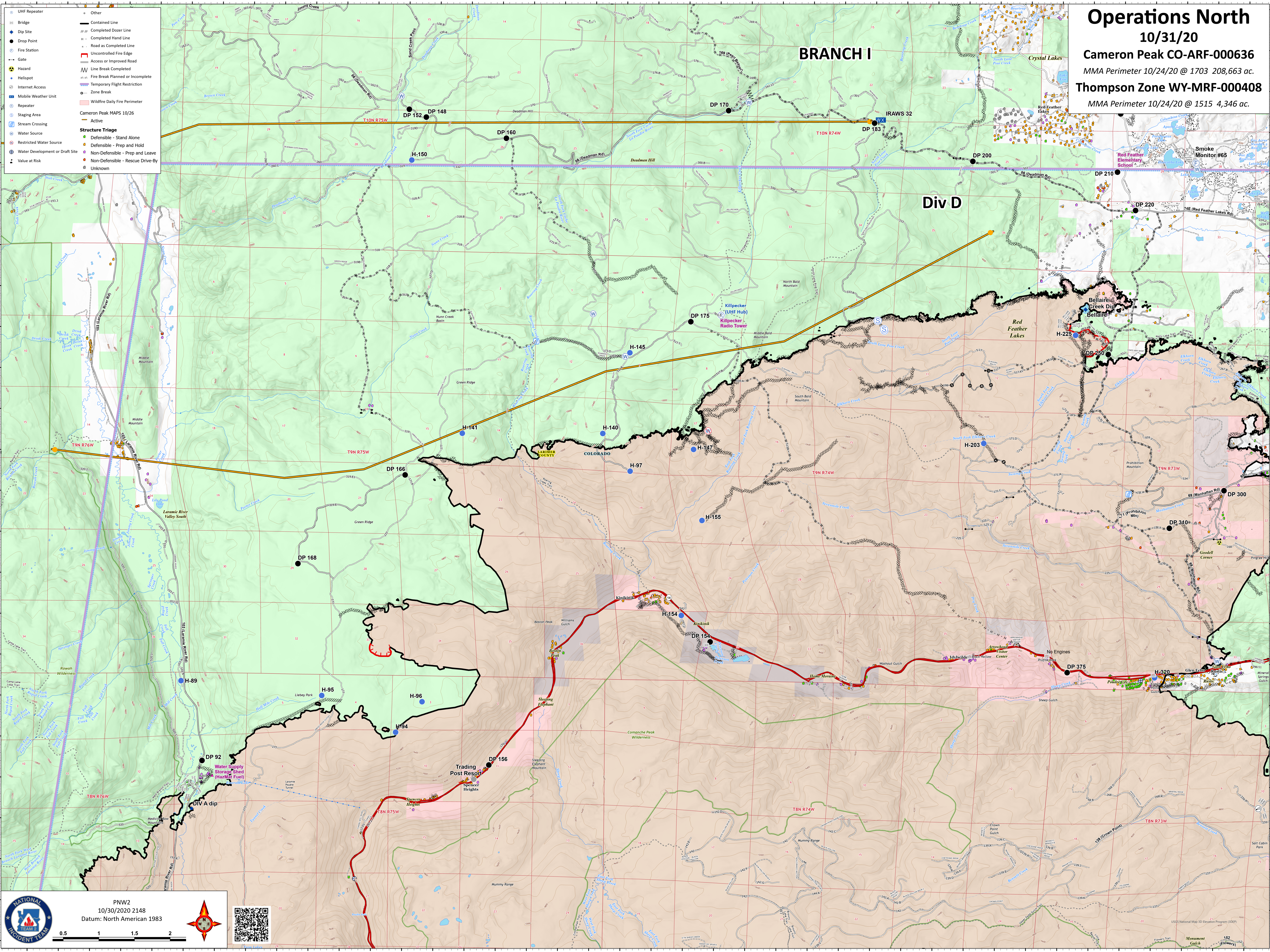


# Operations North

10/31/20  
 Cameron Peak CO-ARF-000636  
 MMA Perimeter 10/24/20 @ 1703 208,663 ac.  
 Thompson Zone WY-MRF-000408  
 MMA Perimeter 10/24/20 @ 1515 4,346 ac.

- UHF Repeater
  - Bridge
  - Dip Site
  - Drop Point
  - Fire Station
  - Gate
  - Hazard
  - Helispot
  - Internet Access
  - Mobile Weather Unit
  - Repeater
  - Staging Area
  - Stream Crossing
  - Water Source
  - Restricted Water Source
  - Water Development or Draft Site
  - Value at Risk
  - Other
  - Contained Line
  - Completed Dozer Line
  - Completed Hand Line
  - Road as Completed Line
  - Uncontrolled Fire Edge
  - Access or Improved Road
  - Line Break Completed
  - Fire Break Planned or Incomplete
  - Temporary Flight Restriction
  - Zone Break
  - Wildfire Daily Fire Perimeter
  - Active
- Cameron Peak MAPS 10/26
- Structure Triage**
- Defensible - Stand Alone
  - Defensible - Prep and Hold
  - Non-Defensible - Prep and Leave
  - Non-Defensible - Rescue Drive-By
  - Unknown



PNW2  
 10/30/2020 2148  
 Datum: North American 1983

Scale: 0.5, 1, 1.5, 2

USGS National Map 3D Elevation Program (DEM)