

# Operations North

10/31/20

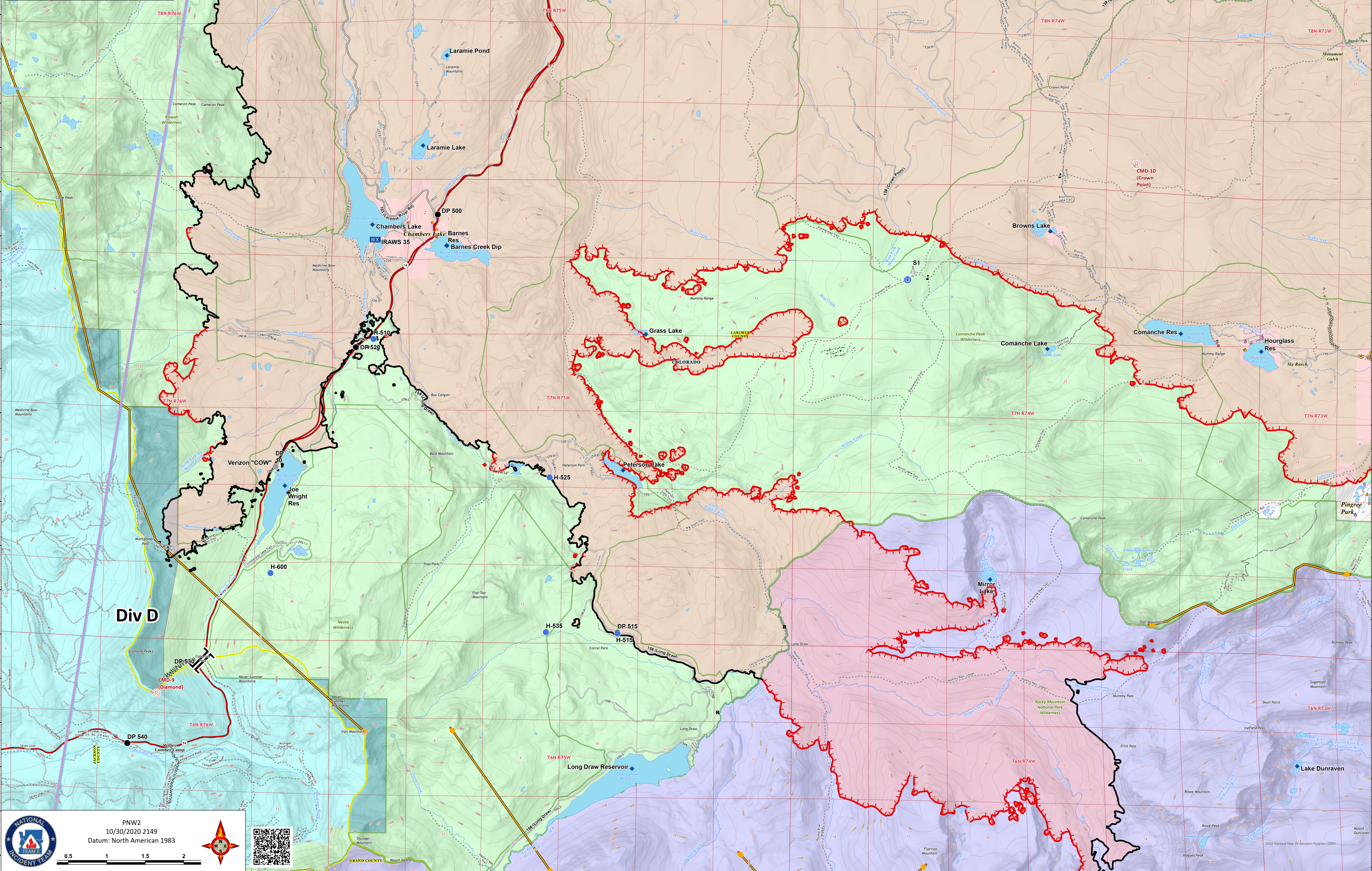
Cameron Peak CO-ARF-000636


MMA Perimeter 10/24/20 @ 1703 208,663 ac.



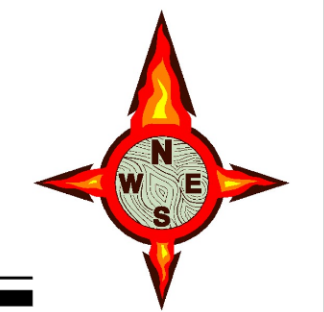
Thompson Zone WY-MRF-000408

MMA Perimeter 10/24/20 @ 1515 4,346 ac.

● Repeater	— 20.00 Completed Dozer Line
● Dip Site	— 11.11 Completed Hand Line
● Drop Point	— 11.11 Uncontrolled Fire Edge
● Unimproved Landing Area	— Access or Improved Road
● Helispot	— Line Break Completed
● Mobile Weather Unit	— 11.11 Fire Break Planned or Incomplete
● Repeater	— 11.11 Temporary Flight Restriction
● Resource Location	— Wildfire Daily Fire Perimeter
● Sling Site	— Cameron Peak MAPS 10/26
● Water Development or Draft Site	— Active
● Value at Risk	<b>Structure Triage</b>
● Other	● Defensible - Stand Alone
● Branch Break	● Defensible - Prep and Hold
● Contained Line	● Non-Defensible - Prep and Leave
	● Non-Defensible - Rescue Drive-By



 PNW2  
10/30/2020 2149  
Datum: North American 1983



USGS National Map 3D Elevation Program (3DEP)