

# Operations East

10/31/20

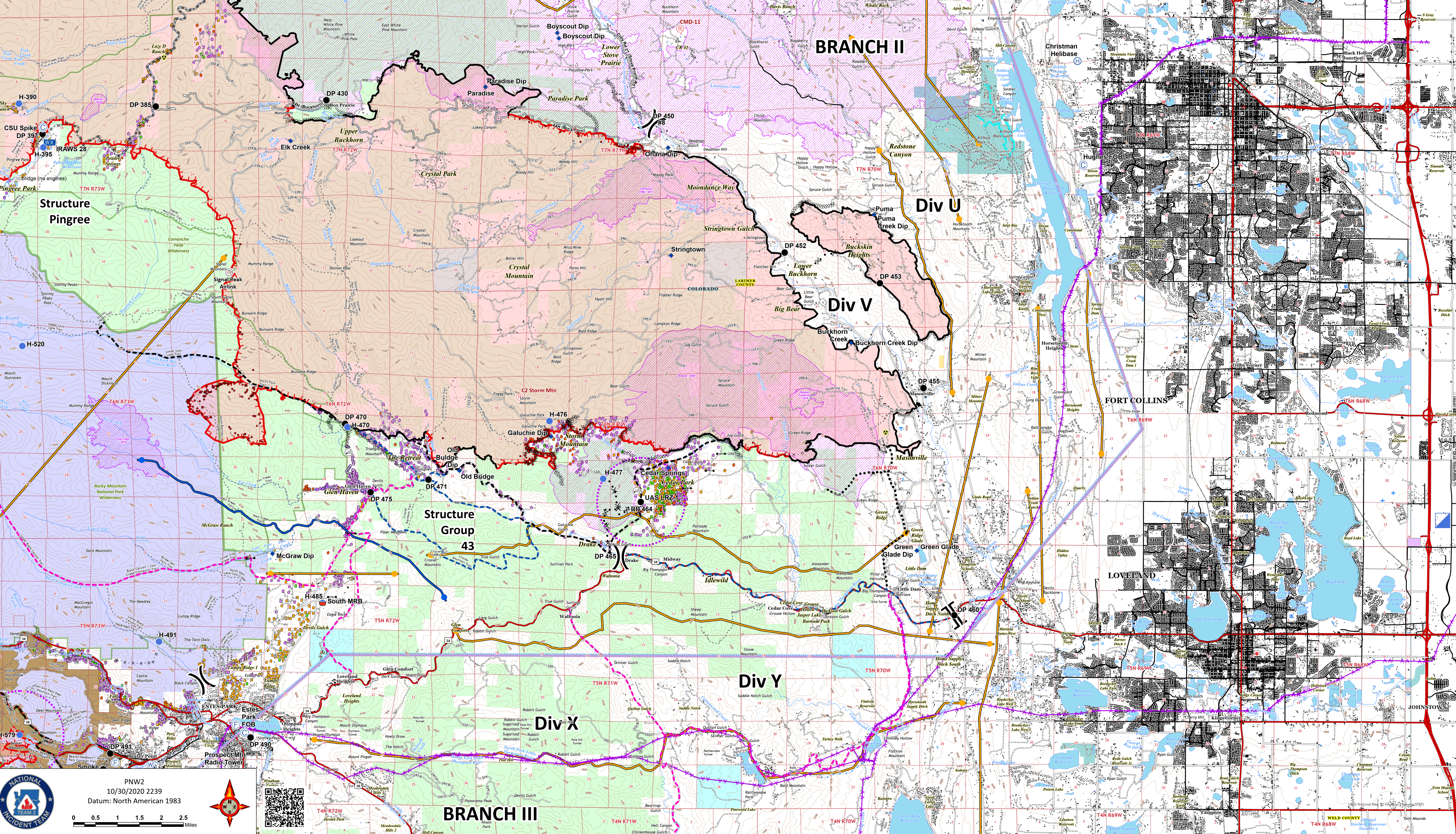
Cameron Peak CO-ARF-000636

MMA Perimeter 10/24/20 @ 1703 208,663 ac.

Thompson Zone WY-MRF-000408

MMA Perimeter 10/24/20 @ 1515 4,346 ac.

- AirLink Repeater
  - Repeater
  - Bridge
  - Camp
  - Dip Site
  - Drop Point
  - Fire Station
  - Gate
  - Hazard
  - Helibase
  - Helispot
  - Incident Command Post
  - Internet Access
  - Mobile Weather Unit
  - Repeater
  - Retardant/Mud Pit
  - Water Source
  - Water Development or Draft Site
  - Structure Triage
    - Value at Risk
    - Other
    - Division Break
    - Branch Break
- Contained Line
  - Completed Dozer Line
  - Road as Completed Line
  - Proposed Dozer Line
  - Uncontrolled Fire Edge
  - Access or Improved Road
  - Planned Secondary Line
  - Temporary Flight Restriction
  - UAS Launch and Recovery Zone
  - Wildfire Daily Fire Perimeter
  - Fire History
  - Fuels Treatments
    - Primary Line
    - Secondary Line
    - Last Chance Line
  - Cameron Peak MAPS 10/26
    - Active
    - Pending
  - Structure Triage
    - Defensible - Stand Alone
    - Defensible - Prep and Hold
    - Non-Defensible - Prep and Leave
    - Non-Defensible - Rescue Drive-By
    - Unknown



PNW2  
10/30/2020 2239  
Datum: North American 1983

WELD COUNTY  
Stout Reservoir  
Stout Reservoir