

Medical Evacuation

11/01/2020

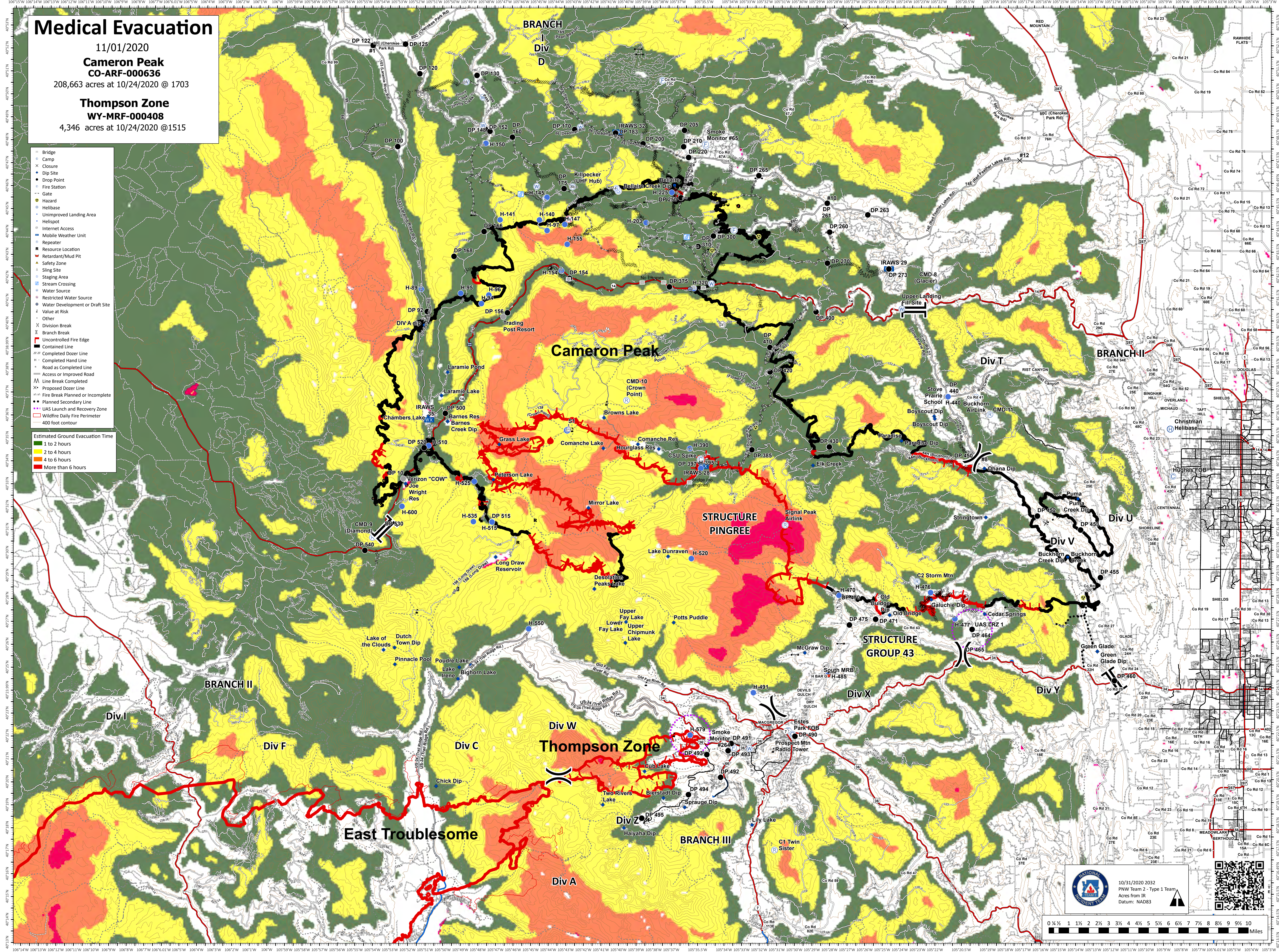
Cameron Peak
CO-ARF-000636

208,663 acres at 10/24/2020 @ 1703

Thompson Zone
WY-MRF-000408

4,346 acres at 10/24/2020 @1515

- Bridge
- Camp
- Closure
- Dip Site
- Drop Point
- Fire Station
- Gate
- Hazard
- Helibase
- Unimproved Landing Area
- Helispot
- Internet Access
- Mobile Weather Unit
- Repeater
- Resource Location
- Retardant/Mud Pit
- Safety Zone
- Sling Site
- Staging Area
- Stream Crossing
- Water Source
- Restricted Water Source
- Water Development or Draft Site
- Value at Risk
- Other
- Division Break
- Branch Break
- Uncontrolled Fire Edge
- Contained Line
- Completed Dozer Line
- Completed Hand Line
- Road as Completed Line
- Access or Improved Road
- Line Break Completed
- Proposed Dozer Line
- Fire Break Planned or Incomplete
- UAS Launch and Recovery Zone
- Wildfire Daily Fire Perimeter
- 400 foot contour



10/31/2020 2032
PNW Team 2 - Type 1 Team
Acres from IR
Datum: NAD83