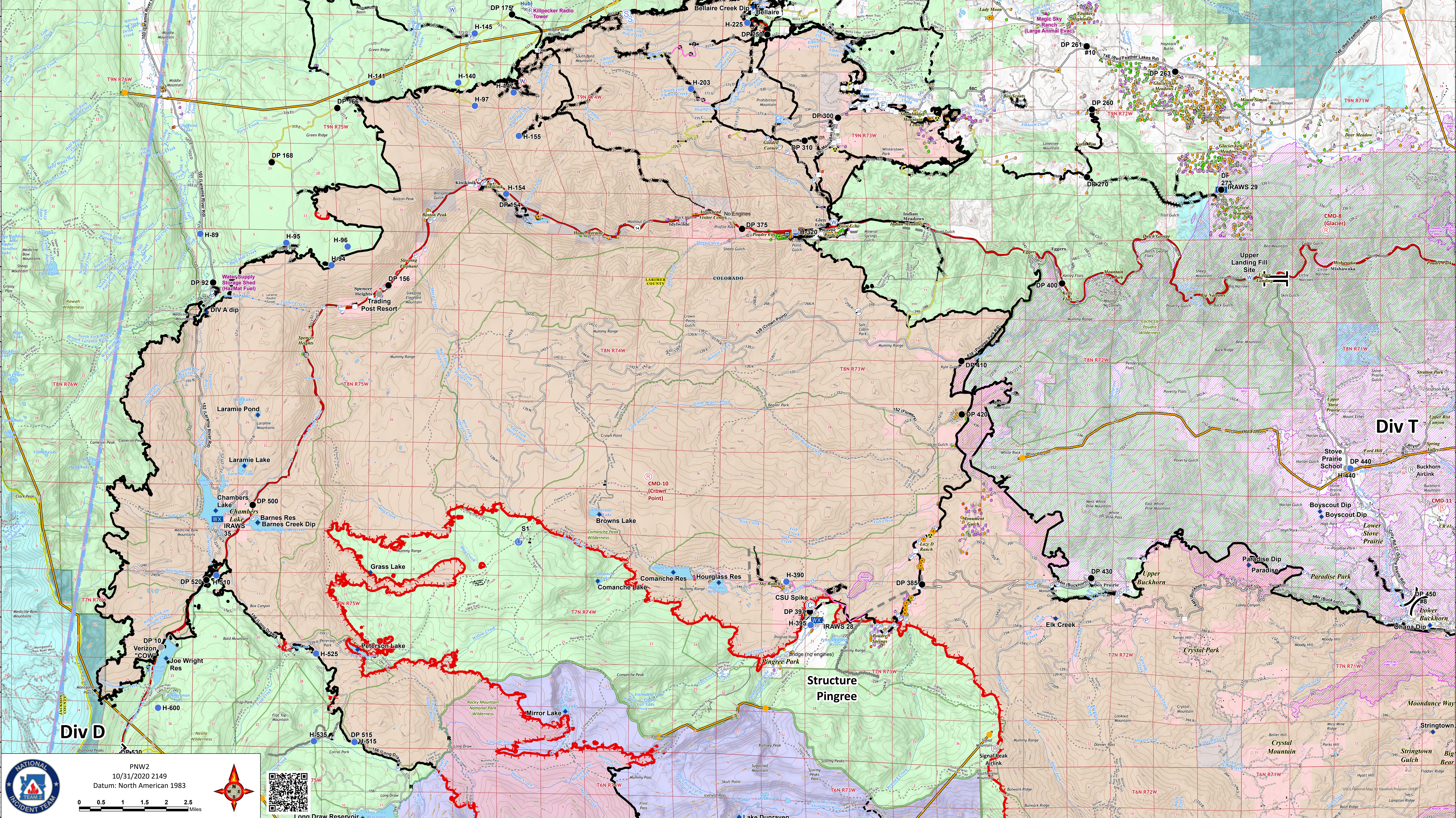


Operations North
11/01/20
Cameron Peak CO-ARF-000636
MMA Perimeter 10/24/20 @ 1703 208,663 ac.
Thompson Zone WY-MRF-000408
MMA Perimeter 10/24/20 @ 1515 4,346 ac.

- AirLink Repeater
- UHF Repeater
- Repeater
- Bridge
- Camp
- Closure
- Dip Site
- Drop Point
- Fence - Cut/Damaged
- Fire Station
- Gate
- Hazard
- Unimproved Landing Area
- Helispot
- Internet Access
- Mobile Weather Unit
- Repeater
- R Resource Location
- Safety Zone
- Sling Site
- Staging Area
- Stream Crossing
- Water Source
- Restricted Water Source
- Water Development or Draft Site
- Value at Risk
- Other
- Division Break
- Branch Break
- Contained Line
- Completed Dozer Line
- Completed Hand Line
- Road as Completed Line
- Uncontrolled Fire Edge
- Access or Improved Road
- Line Break Completed
- Fire Break Planned or Incomplete
- Temporary Flight Restriction
- Zone Break
- Wildfire Daily Fire Perimeter
- Fire History
- Primary Line
- Cameron Peak MAPS 10/26
- Active
- Structure Triage
- Defensible - Stand Alone
- Defensible - Prep and Hold
- Non-Defensible - Prep and Leave
- Non-Defensible - Rescue Drive-By
- Unknown



NW2
10/31/2020 2149
Datum: North American 1983

Long Draw Reservoir

NW2
10/31/2020 2149
Datum: North American 1983