

Operations East

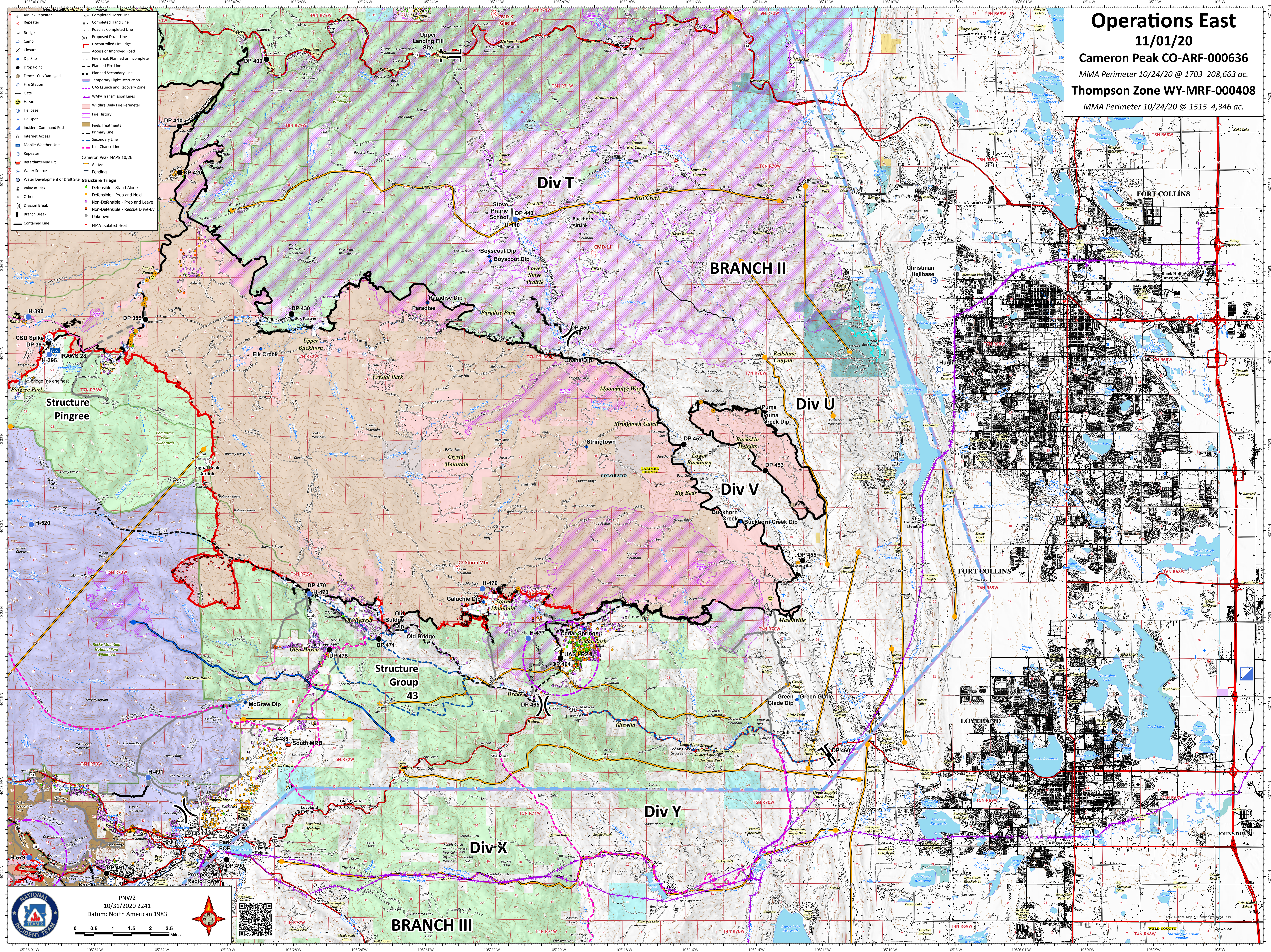
11/01/20

Cameron Peak CO-ARF-000636

MMA Perimeter 10/24/20 @ 1703 208,663 ac.

Thompson Zone WY-MRF-000408

MMA Perimeter 10/24/20 @ 1515 4,346 ac.



- AirLink Repeater
- Repeater
- Bridge
- Camp
- Closure
- Dip Site
- Drop Point
- Fence - Cut/Damaged
- Fire Station
- Gate
- Hazard
- Helibase
- Helipoint
- Incident Command Post
- Internet Access
- Mobile Weather Unit
- Repeater
- Retardant/Mud Pit
- Water Source
- Water Development or Draft Site
- Value at Risk
- Division Break
- Branch Break
- Contained Line
- Completed Dozer Line
- Proposed Dozer Line
- Uncontrolled Fire Edge
- Access or Improved Road
- Fire Break Planned or Incomplete
- Planned Fire Line
- Planned Secondary Line
- Temporary Flight Restriction
- UAS Launch and Recovery Zone
- WAPA Transmission Lines
- Wildfire Daily Fire Perimeter
- Fire History
- Fuels Treatments
- Primary Line
- Secondary Line
- Last Chance Line

- Cameron Peak MAPS 10/26
- Active
- Pending
- Structure Triage
- Defensible - Stand Alone
- Defensible - Prep and Hold
- Other
- Non-Defensible - Prep and Leave
- Non-Defensible - Rescue Drive-By
- Unknown
- MMA Isolated Heat

PNW2
10/31/2020 2241
Datum: North American 1983

