

Thompson Zone

11/01/20

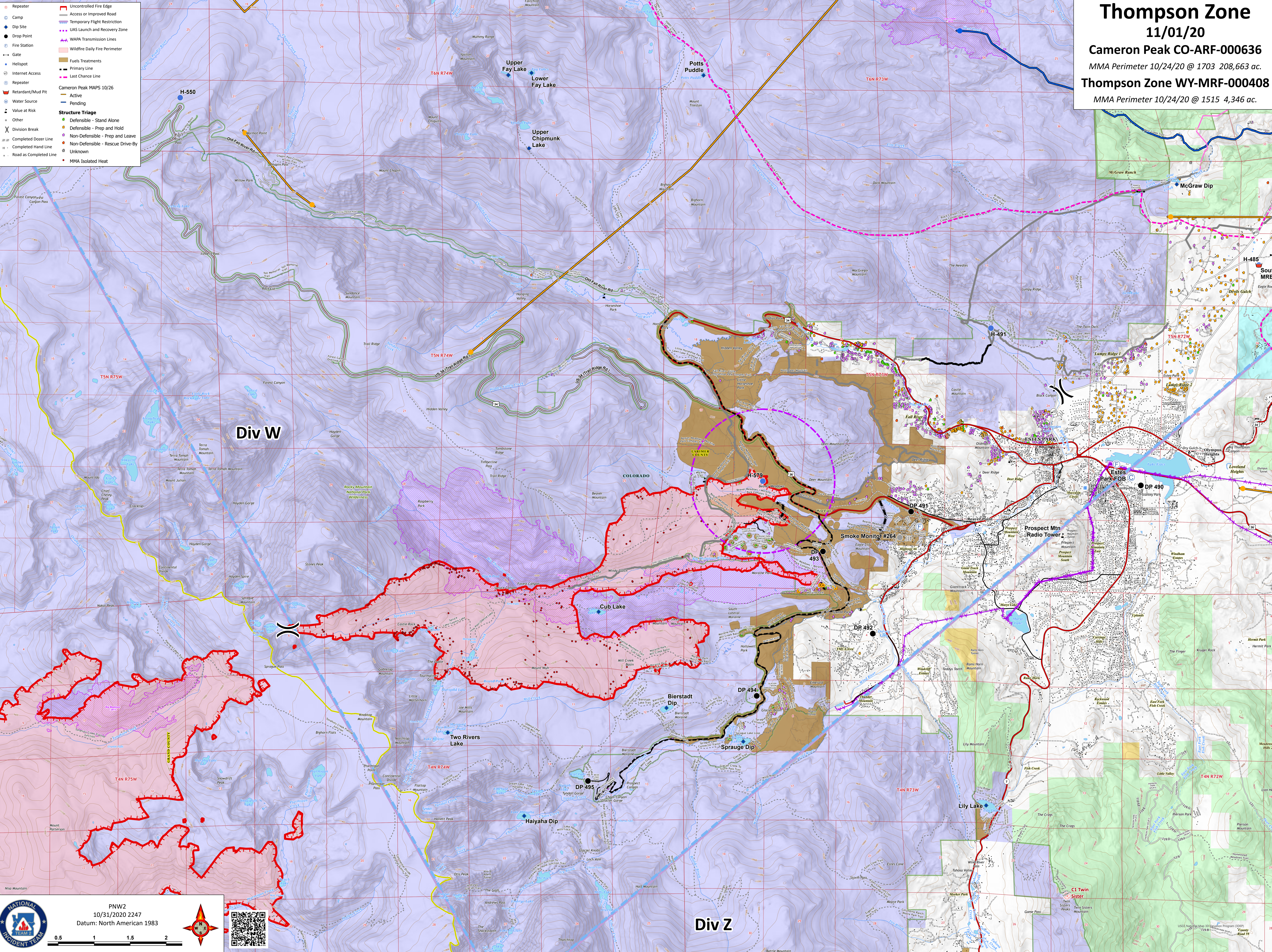
Cameron Peak CO-ARF-000636


MMA Perimeter 10/24/20 @ 1703 208,663 ac.




Thompson Zone WY-MRF-000408

MMA Perimeter 10/24/20 @ 1515 4,346 ac.

- Repeater
- Camp
- Dip Site
- Drop Point
- Fire Station
- Gate
- Hellspot
- Internet Access
- Repeater
- Retardant/Mud Pit
- Water Source
- Value at Risk
- Other
- Division Break
- Completed Dozer Line
- Completed Hand Line
- Road as Completed Line
- Uncontrolled Fire Edge
- Access or Improved Road
- Temporary Flight Restriction
- UAS Launch and Recovery Zone
- WAPA Transmission Lines
- Wildfire Daily Fire Perimeter
- Fuels Treatments
- Primary Line
- Last Chance Line
- Cameron Peak MAPS 10/26
- Active
- Pending
- Structure Triage
- Defensible - Stand Alone
- Defensible - Prep and Hold
- Non-Defensible - Prep and Leave
- Non-Defensible - Rescue Drive-By
- Unknown
- MMA Isolated Heat



 PNW2
10/31/2020 2247
Datum: North American 1983



USGS National Map Information Program (NIP)
© 2018