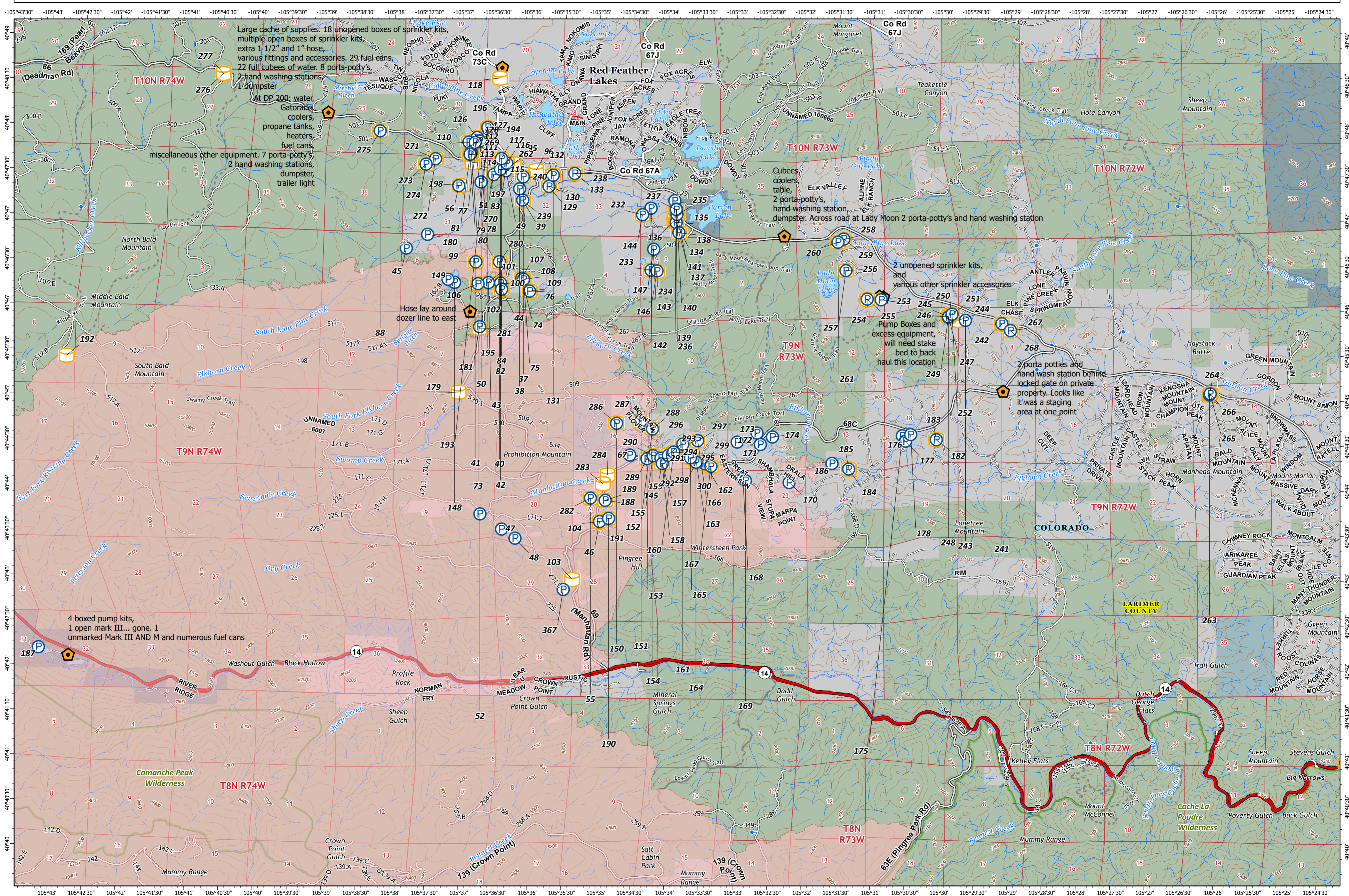
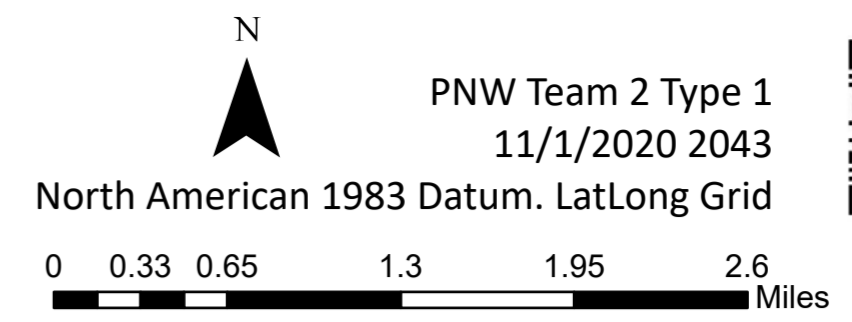


208,913 acres at MMA  
Perimeter 11/01/2020 @ 1351  
(MMA + IR)

4,346 acres at MMA Perimeter  
11/01/2020 @ 1439 (MMA +  
IR)

- Aerial Hazard
- Aerial Ignition
- Airstrip or Airport
- Bridge
- Camp
- Clean Up Area
- Closure
- Culvert
- Dip Site
- Drop Point
- Dozer Push
- Fence - Cut/Damaged
- Fire Origin
- Fire Station
- First Aid Station
- Gate
- Hazard



Large cache of supplies. 18 unopened boxes of sprinkler kits, multiple open boxes of sprinkler kits, extra 1 1/2" and 1" hose, various fittings and accessories. 29 fuel cans, 22 full cubees of water. 8 porta-potty's, 2 hand washing stations, 1 dumpster

At DP 200: water, Gatorade, coolers, propane tanks, heaters, fuel cans, miscellaneous other equipment. 7 porta-potty's, 2 hand washing stations, dumpster, trailer light

Cubees, coolers, table, 2 porta-potty's, hand washing station, dumpster. Across road at Lady Moon 2 porta-potty's and hand washing station

2 unopened sprinkler kits, and various other sprinkler accessories

Pump Boxes and excess equipment, will need stake bed to back haul this location

2 porta potties and hand wash station behind locked gate on private property. Looks like it was a staging area at one point

4 boxed pump kits, 1 open mark III... gone. 1 unmarked Mark III AND M and numerous fuel cans