

Ops RMNP

11/02/20

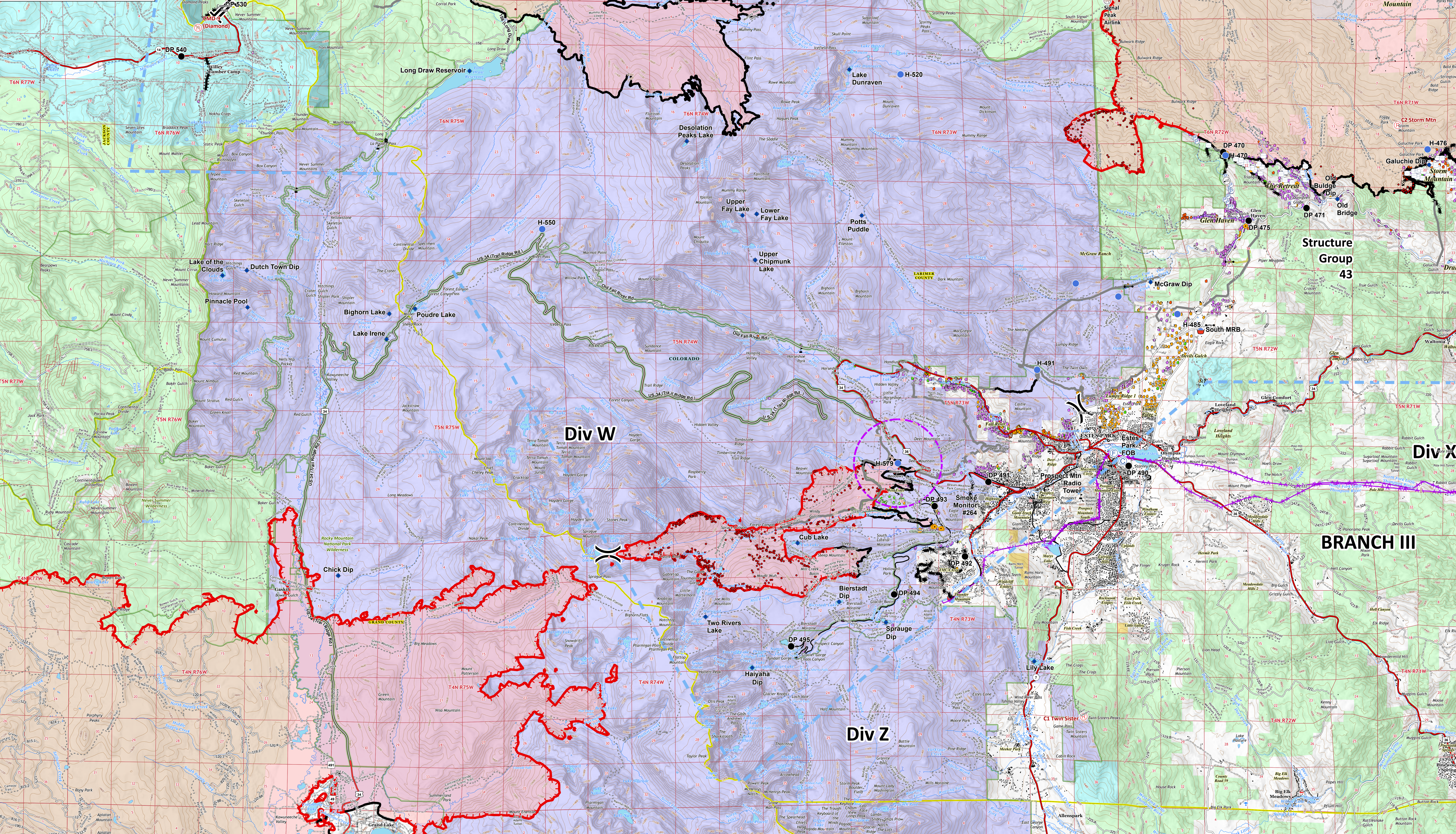
Cameron Peak CO-ARF-000636

MMA Perimeter 11/01/20 @ 1351 208,913 ac.

Thompson Zone WY-MRF-000408

MMA Perimeter 11/01/20 @ 1439 4,889 ac.

- AirLink Repeater
- Repeater
- Division Break
- Branch Break
- Camp
- Fire Station
- Helispot
- Internet Access
- Mobile Weather Unit
- Repeater
- Resource Location
- Retardant/Mud Pit
- Water Source
- Value at Risk
- Other
- Completed Dozer Line
- Uncontrolled Fire Edge
- Access or Improved Road
- Line Break Completed
- UAS Launch and Recovery Zone
- WAPA Transmission Lines
- Wildfire Daily Fire Perimeter
- Structure Triage
 - Defensible - Stand Alone
 - Defensible - Prep and Hold
 - Non-Defensible - Prep and Leave
 - Non-Defensible - Rescue Drive-By
 - Unknown
 - MMA Isolated Heat



PNW2
11/1/2020 2225
Datum: North American 1983

0 0.5 1 1.5 2 Miles



Div X

BRANCH III

Structure Group 43

Div D

Div W

Div Z

Structure Pingree

Smoke Monitor #264

Prospect Min Radio Tower

Estes Park FOB

McGraw Dip

South MRB

Upper Chipmunk Lake

Lower Fay Lake

Upper Fay Lake

Potts Puddle

Lake Dunraven

Mirror Lake

Desolation Peaks Lake

Long Draw Reservoir

Peterson Lake

Grass Lake

Comanche Res

Hourglass Res

CSU Spike

Bingree Park

DP 397

H-395

IRAWS 28

DP 385

DP 430

DP 530

DP 540

DP 515

DP 515

DP 470

DP 475

DP 471

DP 475

DP 491

DP 493

DP 492

DP 494

DP 495

DP 496

DP 497

DP 498

DP 499

DP 500

DP 501

DP 502

DP 503

DP 504

DP 505

DP 506

DP 507

DP 508

DP 509

DP 510

DP 511

DP 512

DP 513

DP 514

DP 515

DP 516

DP 517

DP 518

DP 519

DP 520

DP 521

DP 522

DP 523

DP 524

DP 525

DP 526

DP 527

DP 528

DP 529

DP 530

DP 531

DP 532

DP 533

DP 534

DP 535

DP 536

DP 537

DP 538

DP 539

DP 540

DP 541

DP 542

DP 543

DP 544

DP 545

DP 546

DP 547

DP 548

DP 549

DP 550

DP 551

DP 552

DP 553

DP 554

DP 555

DP 556

DP 557

DP 558

DP 559

DP 560

DP 561

DP 562

DP 563

DP 564

DP 565

DP 566

DP 567

DP 568

DP 569

DP 570

DP 571

DP 572

DP 573

DP 574

DP 575

DP 576

DP 577

DP 578

DP 579

DP 580

DP 581

DP 582

DP 583

DP 584

DP 585

DP 586

DP 587

DP 588

DP 589

DP 590

DP 591

DP 592

DP 593

DP 594

DP 595

DP 596

DP 597

DP 598

DP 599

DP 600