

# Thompson Zone

11/02/20

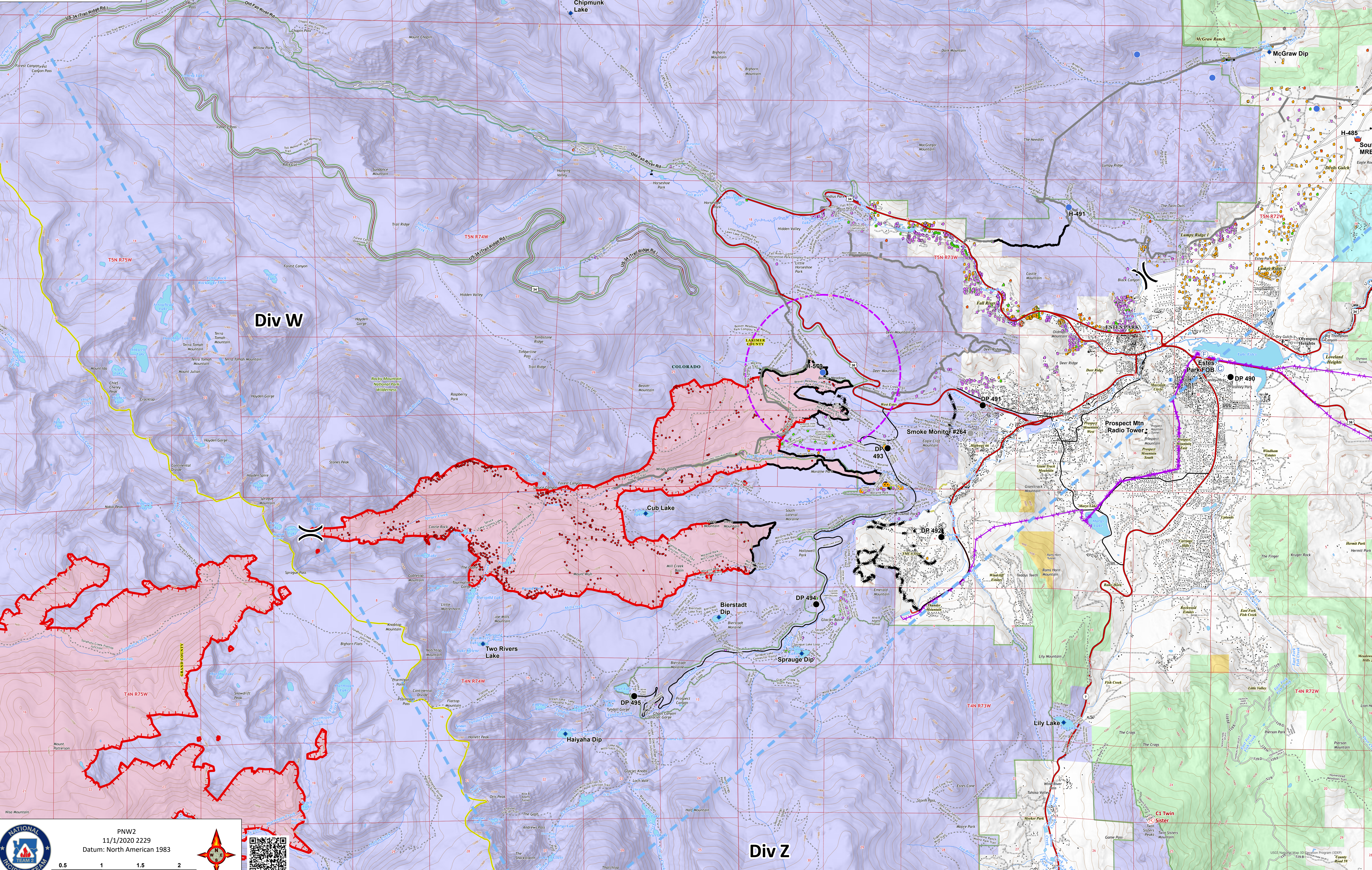
Cameron Peak CO-ARF-000636


MMA Perimeter 11/01/20 @ 1351 208,913 ac.




Thompson Zone WY-MRF-000408

MMA Perimeter 11/01/20 @ 1439 4,889 ac.

- Repeater
- Camp
- Dip Site
- Drop Point
- Fire Station
- Gate
- Hellspot
- Internet Access
- Repeater
- Retardant/Mud Pit
- Water Source
- Value at Risk
- Other
- Division Break
- Contained Line
- Completed Dozer Line
- Completed Hand Line
- Road as Completed Line
- Uncontrolled Fire Edge
- Access or Improved Road
- UAS Launch and Recovery Zone
- WAPA Transmission Lines
- Wildfire Daily Fire Perimeter
- Structure Triage
  - Defensible - Stand Alone
  - Defensible - Prep and Hold
  - Non-Defensible - Prep and Leave
  - Non-Defensible - Rescue Drive-By
  - Unknown
  - MMA Isolated Heat



 PNW2  
11/1/2020 2229  
Datum: North American 1983



USGS National Map Information Program (NIP)  
1:50,000 Scale  
County Road 59