

# Operations North

11/02/20

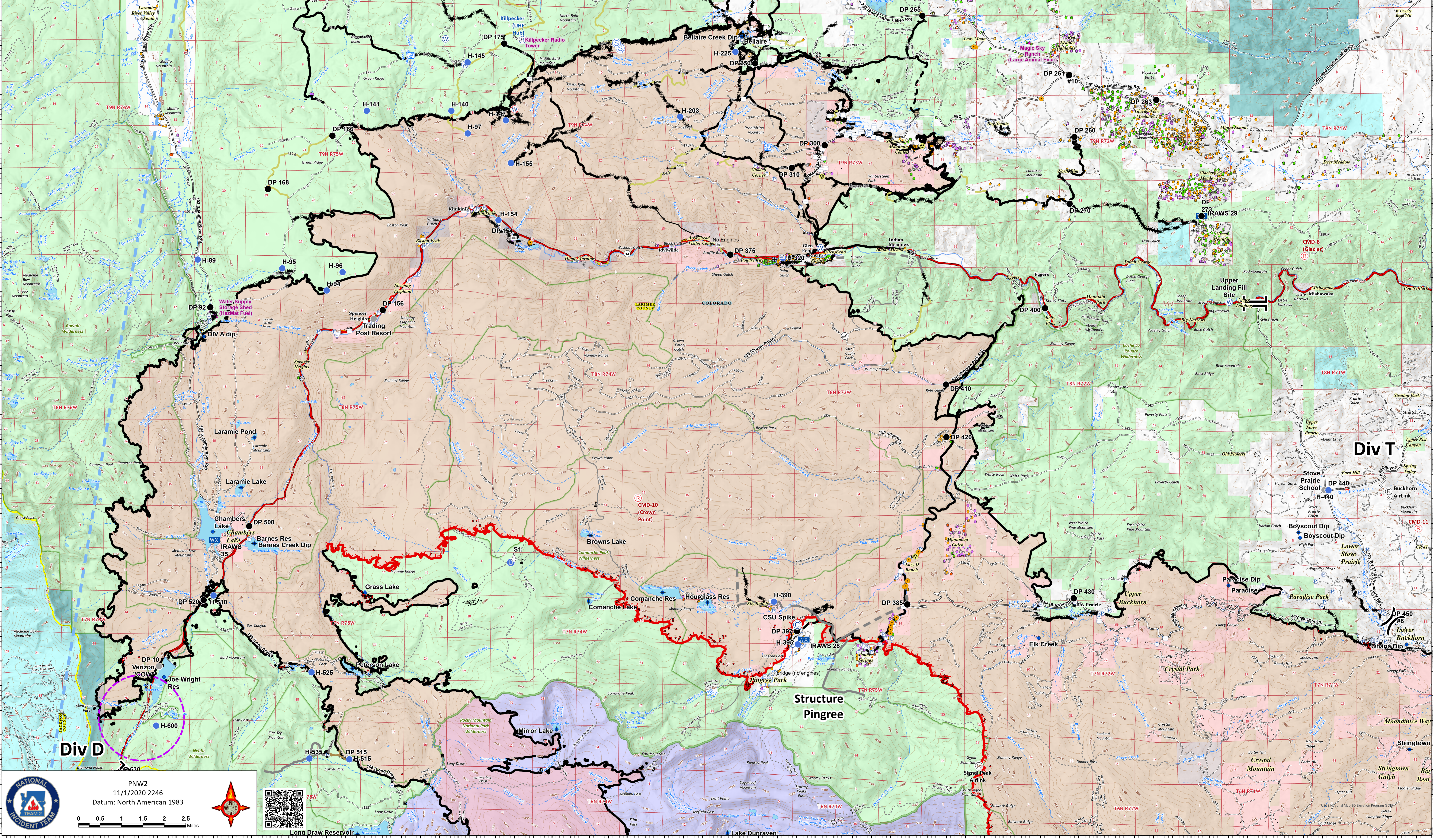
Cameron Peak CO-ARF-000636

MMA Perimeter 11/01/20 @ 1351 208,913 ac.

Thompson Zone WY-MRF-000408

MMA Perimeter 11/01/20 @ 1439 4,889 ac.

- AirLink Repeater
  - UHF Repeater
  - Repeater
  - Bridge
  - Camp
  - Closure
  - Dip Site
  - Drop Point
  - Fence - Cut/Damaged
  - Fire Station
  - Hazard
  - Unimproved Landing Area
  - Helispot
  - Internet Access
  - Mobile Weather Unit
  - Repeater
  - Resource Location
  - Safety Zone
  - Sling Site
  - Staging Area
  - Stream Crossing
  - Water Source
  - Restricted Water Source
  - Water Development or Draft Site
  - Value at Risk
  - Other
  - Division Break
  - Branch Break
  - Completed Dozer Line
  - Completed Hand Line
  - Road as Completed Line
  - Uncontrolled Fire Edge
  - Access or Improved Road
  - Line Break Completed
  - UAS Launch and Recovery Zone
  - Wildfire Daily Fire Perimeter
- ### Structure Triage
- Defensible - Stand Alone
  - Defensible - Prep and Hold
  - Non-Defensible - Prep and Leave
  - Non-Defensible - Rescue Drive-By
  - Unknown



PNW2  
11/1/2020 2246  
Datum: North American 1983

USGS National Map 10 Dataweb Program (2019)  
Lampton Ridge