

Operations

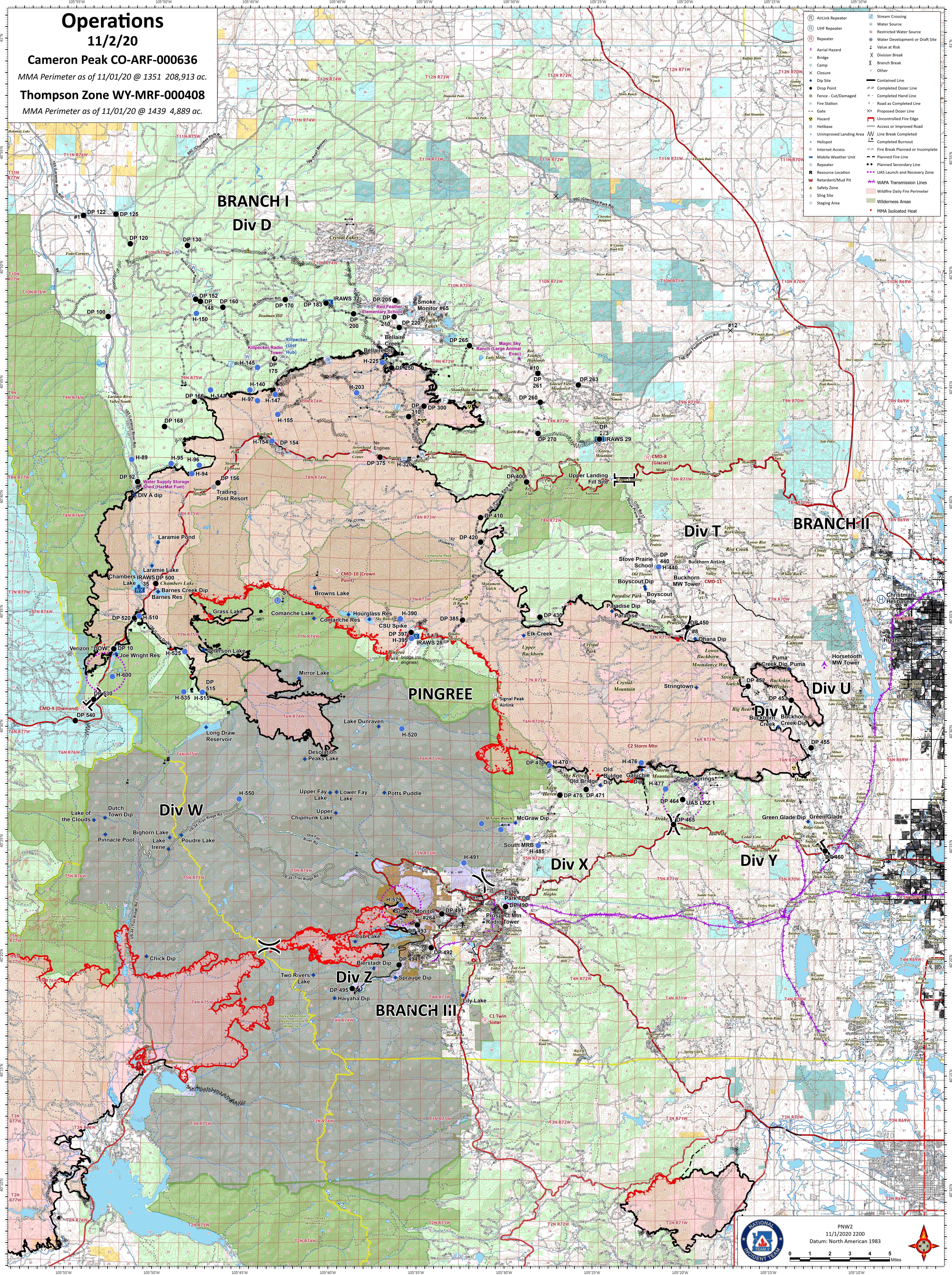
11/2/20

Cameron Peak CO-ARF-000636

MMA Perimeter as of 11/01/20 @ 1351 208,913 ac.

Thompson Zone WY-MRF-000408

MMA Perimeter as of 11/01/20 @ 1439 4,889 ac.



- AirLink Repeater
- UHF Repeater
- Repeater
- Aerial Hazard
- Bridge
- Camp
- Closure
- Dip Site
- Drop Point
- Fence - Cut/Damaged
- Fire Station
- Gate
- Hazard
- Helibase
- Unimproved Landing Area
- Helispot
- Internet Access
- Mobile Weather Unit
- Repeater
- Resource Location
- Retardant/Mud Pit
- Safety Zone
- Sling Site
- Staging Area
- Stream Crossing
- Water Source
- Restricted Water Source
- Water Development or Draft Site
- Value at Risk
- Division Break
- Branch Break
- Other
- Contained Line
- Completed Dozer Line
- Line Break Completed
- Completed Hand Line
- Road as Completed Line
- Proposed Dozer Line
- Uncontrolled Fire Edge
- Access or Improved Road
- Line Break Planned or Incomplete
- Completed Burnout
- Fire Break Planned or Incomplete
- Planned Fire Line
- Planned Secondary Line
- Repeater
- UAS Launch and Recovery Zone
- WAPA Transmission Lines
- Wildfire Daily Fire Perimeter
- Wilderness Areas
- MMA Isolated Heat